



MADE  
FOR  
WORK.

20  
22

# New

MASTER KIT

## 114



HOME KIT

## 117



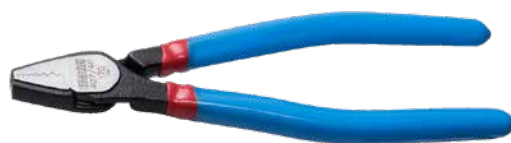
FORK SEAL DRIVERS

## 78



SCREW PLIERS

## 30



BLACK WORKSHOP EQUIPMENT

## 133





<b>MULTI-TOOLS</b>	<b>A</b>
<b>Y WRENCHES</b>	<b>B</b>
<b>HEX &amp; TORX WRENCHES</b>	<b>C</b>
<b>GENERAL SHOP TOOLS</b>	<b>D</b>
<b>PLIERS</b>	<b>E</b>
<b>TORQUE WRENCH&amp;ACCESSORIES</b>	<b>F</b>
<b>BOTTOM BRACKET TOOLS</b>	<b>G</b>
<b>CRANKSET TOOLS</b>	<b>H</b>
<b>PEDAL TOOLS</b>	<b>I</b>
<b>CHAIN</b>	<b>J</b>
<b>CASSETTE &amp; FREEWHEEL TOOLS</b>	<b>K</b>
<b>BRAKE TOOLS</b>	<b>L</b>
<b>FRAME &amp; FORK TOOLS</b>	<b>M</b>
<b>BEARING TOOLS</b>	<b>N</b>
<b>SUSPENSION TOOLS</b>	<b>O</b>
<b>WHEEL TOOLS</b>	<b>P</b>
<b>TIRE &amp; TUBE TOOLS</b>	<b>R</b>
<b>WHEEL TRUING STANDS &amp; ACCESORIES</b>	<b>S</b>
<b>REPAIR STANDS &amp; ACCESORIES</b>	<b>T</b>
<b>BIKE STORAGE</b>	<b>U</b>
<b>TOOL SETS</b>	<b>V</b>
<b>COMPLETE SERVICE SOLUTIONS</b>	<b>W</b>
<b>WORK SHOP A LA CART</b>	<b>X</b>

# Racing since 2010



## 2010-2017

Unior's first factory racing program was established in 2010, with a clear vision that still stands today – spread the word about Unior Bike Tools product and be a strong and competitive professional mountain bike team. In 8 years of racing under the UTT name we have achieved some amazing results and employed athletes from different countries and even continents. From Tanja Žakelj, who won the overall UCI XCO World Cup in 2013, to Reece Wilson, who got his first elite Top-30 in World Cup in our jersey and became a World Champion in 2020 under the Trek Factory Racing flag.



## 2018-2020

Our merger with Canadian bicycle producer Devinci Cycles lead to the creation of one of the strongest mountain bike teams on the circuit. Riders from New Zealand, France, United States of America, Ireland, Canada and Slovenia achieved tons of memorable results, such as podium finishes for Dakotah Norton at World Cups in Lošinj and Lousa, Keegan Wrights' wins on Crankworx and Damien Oton's victory on Megavalanche.



## 2021

For the latest iteration of the team, Unior forged a new alliance with another Slovenian manufacturer. Sinter is manufacturer of high-end brake pads for cycling & other industries and has joined the team as a title co-sponsor. The program will focus on downhill and cross-country, with Slovenian riders Tanja Žakelj, Jure Žabjek and Žak Gomilšček. The concept remains the same – offer athletes the best possible support, be the best ambassador to all our sponsors, continue to work hard and have fun while doing it.



# Teams we Support

Unior Bike Tools **supports some of the world's best athletes and teams** with many tools developed in conjunction with them. Racing is part of us. There are other teams using Unior Bike Tools who are not officially supported by Unior but have **chosen to invest** in our tools.



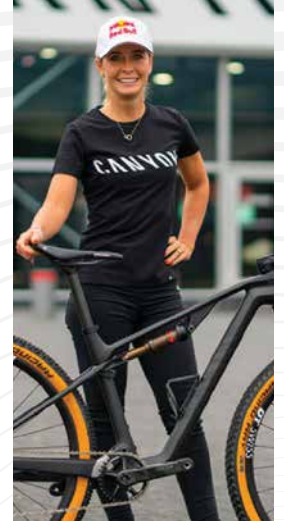
**TREK**  
FACTORY RACING



Continental's  
**Atherton**  
racing.com



**COMMENCAL** VALL NORD ANDORRA



**CANYON** Emily Batty

**NS** BIKES **UR**



**TREK** | Segafredo ZALTI



**deceuninck**  
QUICK-STEP  
CYCLING TEAM



TEAM | **INEOS**



**M** MOVISTAR TEAM



**JUMBO**  
**VISMA**





# SINCE 1919.

**Since 1919** Unior tools have made people's lives easier. Unior's history and experience informs our modern and innovative approach to manufacturing. **We look forward rather than back** and use our first-hand knowledge to continuously improve.

We are a **Slovenian** company with a global reach, our bike tools are sold in over 80 countries. Our experience and capabilities allow us to manufacture most tools in house, but we work with local partners where they provide us with additional resources as required.

**Unior was one of the first hand tool manufacturers in Europe to receive ISO 9001 quality certification** for the development, production, and marketing of hand tools, sheet metal housing for hand tools and mechanical processing of forging parts.

In addition, **our tools comply with the DIN standard** and we employ the EFQM model whereby all employees are engaged in the process of creating quality improvements and learning from each other. By assuring quality, Unior co-operates with suppliers, buyers and other partners.





**A**

**MULTI-TOOLS**

## MULTITOOL EURO17

New Euro17 Multitool - Designed and produced in Slovenia, Europe, from the best materials to the highest standard. Tool spindles are chrome plated, additionally the tips black oxide coated to ensure the highest tolerance and greater durability. Chrome vanadium 4, molybdenum vanadium 52, chrome-silicon-vanadium 5 are just some of the high end materials used on the Euro17 Multitool that make this product the best.

### EURO17 MULTITOOL INCLUDES:

- Hex wrenches 2, 2.5, 3, 4, 5, 6, 8
- TX wrenches 10, 25
- PH1 screwdriver
- Flat screwdriver 1.0 x 5.0
- Chain tool
- Schrader & Presta valve tool
- Spoke Key 3.3, 3.45 and DT

BLUE		RED	
CODE	ART.	CODE	ART.
625790	1655EURO17	625901	1655EUR17-US



## MULTITOOL EURO13

New Euro13 Multitool - Designed and produced in Slovenia, Europe, from the best materials to the highest standard. Tool spindles are chrome plated, additionally the tips are black oxide coated to ensure the highest tolerance and greater durability. Chrome vanadium 4, molybdenum vanadium 52, chrome-silicon-vanadium 5 are just some of the high end materials used on the Euro17 Multitool that make this product the best.

### EURO13 MULTITOOL INCLUDES:

- Hex wrenches 2, 2.5, 3, 4, 5, 6, 8
- TX wrenches 10, 25
- PH1 screwdriver
- Chain tool
- Schrader & Presta valve tool

BLUE		RED	
CODE	ART.	CODE	ART.
625791	1655EURO13	625902	1655EUR13-US





## MULTITOOL EURO7

New Euro7 Multitool - Designed and produced in Slovenia, Europe, from the best materials to the highest standard. Tool spindles are chrome plated, additionally the tips are coated with black oxide coated to ensure the highest tolerance and greater durability. Chrome vanadium 4, molybdenum vanadium 52, chrome-silicon-vanadium 5 are just some of the high end materials used on the Euro17 Multitool that make this product the best.

### EURO7 MULTITOOL INCLUDES:

- Hex wrenches 1.5, 2, 2.5, 3, 4, 5, 6



BLUE		RED	
CODE	ART.	CODE	ART.
625792	1655EURO7	625903	1655EUR7-US

## MULTITOOL EURO6

New Euro6 Multitool - Designed and produced in Slovenia, Europe, from the best materials to the highest standard. Tool spindles are chrome plated, additionally the tips black oxide coated to ensure the highest tolerance and greater durability. Chrome vanadium 4, molybdenum vanadium 52, chrome-silicon-vanadium 5 are just some of the high end materials used on the Euro6 Multitool that make this product the best.

### EURO6 MULTITOOL INCLUDES:

- Hex wrenches 4, 5, 6
- TX wrench 25
- PH1 screwdriver
- Flat screwdriver 1.0 x 5.0



BLUE		RED	
CODE	ART.	CODE	ART.
625793	1655EURO6	625904	1655EUR6-US

MADE  
FOR  
WORK.



**B**

Y WRENCHES

## Y HEX WRENCH

- The wrench is used for tightening and unscrewing screws with hex-shaped nuts.
- The plastic-injected handle offers a comfortable and compact grip, which enables efficient working while the high-quality material enables long-term use of the tool.



BLUE		RED		DIMENSION
CODE	ART.	CODE	ART.	
624027	1781/2HX	624909	1781/2HX-US	4x5x6
624028		624908		2x2,5x3

## Y SOCKET WRENCH

- Unior 1781/2 wrench has three most popular sockets for nuts and bolts sizes 8, 9 and 10mm.
- Ergonomic shape and ideal size make the tools useful for professional and amateur mechanics.



BLUE		RED		DIMENSION
CODE	ART.	CODE	ART.	
623295	1781/2	625008	1781/2-US	8x9x10

## Y TORX WRENCH

- The wrench is used for tightening and unscrewing screws with Torx-shaped nuts.
- The plastic-injected handle offers a comfortable and compact grip, which enables efficient working while the high-quality material enables long-term use of the tool.



BLUE		RED		DIMENSION
CODE	ART.	CODE	ART.	
624029	1781/2TX	624911	1781/2TX-US	10x15x25

## Y BALL END HEX WRENCH

- The wrench is used for tightening and unscrewing screws with hex-shaped nuts.
- The plastic-injected handle offers a comfortable and compact grip, which enables efficient working while the high-quality material enables long-term use of the tool.
- The 1781/2HXS version features ball-end hex wrenches which are specially useful for working under angle.



BLUE		RED		DIMENSION
CODE	ART.	CODE	ART.	
624030	1781/2HXS	624910	1781/2HXS-US	4x5x6



**MADE  
FOR  
WORK.**



**C**

**HEX & TORX WRENCHES**



## 8-PIECE T-HANDLE HEX SET

8 of our incredible T-handle hex wrenches in one set. Includes 2, 2.5, 3, 4, 5, 6, 8, 10mm sizes. As always, a chrome-plated chrome-vanadium shank is mated to a polypropylene handle. The tips are black-oxide coated for corrosion resistance.



RED		DIMENSION
CODE	ART.	
626412	193HX-US	2 - 10/8

## T-HANDLE HEX WRENCH

- material: blade from premium chrome vanadium steel
- handle - polypropylene
- blade chrome plated, black anodised tip

BLUE		RED		DIM
CODE	ART.	CODE	ART.	
623238		625108		2
607161		625109		2.5
607162		625110		3
607163				3.5
607164		625111		4
607165	193HX	625112	193HX-US	4.5
607166		625113		5
607167		625114		6
607168				7
607169		625115		8
607170		625116		10



## T-HANDLE BALL-END HEX WRENCH

- material: blade from premium chrome vanadium steel
- handle - polypropylene
- blade chrome plated, black anodised tip



BLUE		RED		DIM
CODE	ART.	CODE	ART.	
608276				2.5
608277		625117		3
608278		625118		4
608279	193HXS	625119	193HXS-US	5
608280				6
608281				8
608282				10



## TX PROFILE SCREWDRIVER WITH T-HANDLE

- material: premium chrome vanadium steel
- handle - polypropylene
- blade chrome plated, black anodised tip

BLUE		RED		DIM
CODE	ART.	CODE	ART.	
607171				T6
607172				T7
607173		625711		T8
607174				T9
607175		625121		10
607176	193TX	625122	193TX-US	15
607177		625712		20
607178		625123		25
607179		628632		27
607180		625124		30
607181				40
607182				45



## BALL-END HEX SCREWDRIVER TBI

- blade: premium hard chrome vanadium steel, entirely hardened and tempered
- blade chrome plated, blackened tip
- handle: ergonomic shape
- three component material
- hanging hole



BLUE		RED		DIM
CODE	ART.	CODE	ART.	
611715				2
611716		616448		2.5
611717		616449		3
611718	620TBI	616450	620VDETBI	4
611719		616451		5
611720		616452		6
611721		616453		8



## SCREWDRIVER TBI WITH TX PROFILE

- blade: premium hard chrome vanadium steel, entirely hardened and tempered
- blade chrome plated, blackened tip
- handle: ergonomic shape
- three component material
- hanging hole

BLUE		RED		DIM
CODE	ART.	CODE	ART.	
611722				TX 6
611723				TX 7
611724				TX 8
611725				TX 9
611726		616454		TX 10
611727	621TBI	616455	621VDETBI	TX 15
611728		616456		TX 20
611729		616457		TX 25
611730		616458		TX 27
611731		616459		TX 30
611732				TX 40
611733				TX 45



## SCREWDRIVER TBI WITH TX PROFILE AND HOLE

- blade: premium hard chrome vanadium steel, entirely hardened and tempered
- blade chrome plated, blackened tip
- handle: ergonomic shape
- three component material
- hanging hole



BLUE		RED		DIM
CODE	ART.	CODE	ART.	
611734		628279		TR 10
611735		628280		TR 15
611736		628281		TR 20
611737	621/1TBI	628282	621/1TBI-US	TR 25
611738		628430		TR 27
611739		628283		TR 30
611740				TR 40



## BALL-END HEX WRENCH WITH HANDLE

- material: premium chrome vanadium steel
- handle - polypropylene
- blade chrome plated
- Additional handle on the wrench enables good grip.
- with the wrench we can achieve higher torque without damaging the bolts



CODE	ART.	DIM
623145		5
623146		6
623147	1780/3G	8
623148		10



## SET OF HEX WRENCHES ON PLASTIC CLIP

### SET INCLUDES:

- 9x hex wrench (article 220/3) dim. 1.5, 2, 2.5, 3, 4, 5, 6, 8, 10 on plastic clip



BLUE		BLACK		DIM
CODE	ART.	CODE	ART.	
607852	220/3PH	626768	220/3PH-US	1,5-10/9



## SET OF HEX WRENCHES, LONG TYPE ON PLASTIC CLIP

### SET INCLUDES:

- 9x hex wrench, long type (article 220/3L) dim. 1.5, 2, 2.5, 3, 4, 5, 6, 8, 10 on plastic clip



BLUE		BLACK		DIM
CODE	ART.	CODE	ART.	
617082	220/3LPH			1/16"-3/8"/9
608533		626770	220/3LPH-US	1.5-10



## SET OF WRENCHES WITH TX PROFILE AND HOLE IN PLASTIC CLIP

### SET INCLUDES:

- 9x wrench with TX profile and hole (article 220/7TX) dim. TR 8, TR 9, TR 10, TR 15, TR 20, TR 25, TR 27, TR 30, TR 40 on plastic clip



CODE	ART.	DIM
613089	220/7TXPH	TX9-40



## HEX WRENCH

- material: premium chrome vanadium steel
- entirely hardened and tempered
- surface finish: nickel plated
- made according to standard ISO 2936 (only metric dimension)



CODE	ART.	DIM
607823	220/3	1.5
607824		2
607825		2.5
601036		3
601037		4
601038		5
601040		6
601041		7
601042		8
601044		10
601045		12
601046		14
601047		17
601048	19	



## HEX WRENCH, LONG TYPE

- material: premium chrome vanadium steel
- entirely hardened and tempered
- surface finish: nickel plated
- made according to standard ISO 2936 (only metric dimension)



CODE	ART.	DIM
608510	220/3L	1.5
608511		2
608512		2.5
608513		3
608514		4
608515		5
608516		6
608517		7
608518		8
608519		10
608520		12
608521		14
608522		17
608523	19	



## WRENCH WITH TX PROFILE AND HOLE

- material: premium chrome vanadium steel
- entirely hardened and tempered
- surface finish: blacken to standard DIN 50938



CODE	ART.	DIM
616296	220/7TX	TR 9
609173		TR 10
609174		TR 15
609175		TR 20
609176		TR 25
609177		TR 27
609178		TR 30
609179		TR 40



## BALL-END HEX WRENCH

- material: premium chrome vanadium steel
- entirely hardened and tempered
- surface finish: nickel plated



CODE	ART.	DIM
607826	220/3S	1.5
607827		2
607828		2.5
607829		3
607830		4
607831		5
607832		6
607834		8
607835		10



## WRENCH WITH TX PROFILE

- material: premium chrome vanadium steel
- entirely hardened and tempered
- surface finish: blacken to standard DIN 50938



CODE	ART.	DIM
616991	220/7TXN	TX 6
616992		TX 7
616993		TX 8
616994		TX 9
616995		TX10
616996		TX15
616997		TX20
616998		TX25
616999		TX27



## BALL-END HEX WRENCH, LONG TYPE

- material: premium chrome vanadium steel
- entirely hardened and tempered
- surface finish: nickel plated

CODE	ART.	DIM
608524	220/3SL	1.5
608525		2
608526		2.5
608527		3
608528		4
608529		5
608530		6
608531		8
608532		10







**D**

**GENERAL SHOP TOOLS**



## OPEN END WRENCH

- material: premium chrome vanadium steel
- drop forged, entirely hardened and tempered
- surface finish: chrome plated according to ISO 1456:2009
- polished head
- made according to standard ISO 10102 (only metric dimension)
- head of the wrench under 15°

CODE	ART.	DIM
600061	110/1	6x7
600062		7x8
600064		8x9
600065		8x10
600066		9x10
600067		9x11
600068		10x11
600069		10x12
600070		10x13
600072		11x13
600074		12x13
600075		12x14
600076		13x14
600077		13x15
600078		13x17
600079		14x15
600080		14x17
600081		15x17
600082		16x17
600083		17x19
600084	17x22	
600085	18x19	
600086	19x22	
600088	20x22	
600089	21x23	
600090	22x24	
600091	22x27	
600092	24x26	
600093	24x27	
600095	25x28	
600096	27x29	
600097	27x30	
600098	27x32	
600099	30x32	



## COMBINATION WRENCH, SHORT TYPE

- material: premium chrome vanadium steel
- drop forged, entirely hardened and tempered
- surface finish: chrome plated according to ISO 1456:2009
- polished head
- ring part with LIFE profile
- made according to standard ISO 7738 (only metric dimension)
- made according to standard ISO 3318 in 3113A (only metric dimension)



CODE	ART.	DIM
600414	125/1	6
600415		7
600416		8
600417		9
600418		10
600419		11
600420		12
600421		13
600422		14
600423		15
600424		16
600425		17
600426		18
600427		19
600428		20
600429		21
600430		22
602089		23
602090		24
602091		25
602092	26	
602093	27	
602094	28	
602095	29	
602096	30	
602097	32	



## SET OF OPEN END WRENCHES IN BAG

### SET INCLUDES:

- 8x open end wrench (article 110/1) dim. 6x7, 8x9, 10x11, 12x13, 14x15, 16x17, 18x19, 20x22



CODE	ART.	DIM
615465	110/1CT	6-22/8

## SET OF COMBINATION WRENCHES, SHORT TYPE IN BAG

### SET INCLUDES:

- 8x short combination wrench (article 125/1) dim. 8, 10, 11, 13, 15, 17, 19, 22



CODE	ART.	DIM
615478	125/1CT	8-22/8

## COMBINATION WRENCH IBEX

- material: premium chrome vanadium steel
- drop forged, entirely hardened and tempered
- surface finish: chrome plated according to ISO 1456:2009
- polished head
- ring part with LIFE profile

### ADVANTAGES:

- The wrench acts on the flats to protect the corners of the nut
- 3 drive surface for greater power
- 100% positioning of the wrench
- rewind action without removing the wrench



CODE	ART.	DIM
611762	129/1	8
611763		10
611764		11
611765		12
611766		13
611767		14
611768		15
611769		16
611770		17
611930		18
611771		19
611772		22
611773	24	



## ADJUSTABLE WRENCH

- material: premium chrome vanadium steel
- drop forged, entirely hardened and tempered
- surface finish: chrome plated according to ISO 1456:2009
- polished head
- with scale
- made according to standard ISO 6787



CODE	ART.	DIM
611917	250/1	100
611918		150
601016		200

## PRO SOCKET HANDLE

- material: premium flex chrome vanadium steel
- body drop forged
- entirely hardened and tempered
- surface finish: chrome plated to standard ISO 1456:2009
- ergonomic heavy duty double component handle
- Pro Socket Handle is not just another tool from our general tool program. It has been developed purposefully for our bike program. It is light, compact, extremely durable and features double component ergonomic handle. Designed to work with our cassette lock ring tools, flat sockets for suspension service and many more.



## REVERSIBLE RATCHET 1/2"

- material: premium flex chrome vanadium steel
- body drop forged
- entirely hardened and tempered
- surface finish: chrome plated to standard ISO 1456:2009
- ergonomic heavy duty double component handle
- made according to standard ISO 3315

### ADVANTAGES:

- 75 - teeth
- 4,8° working angle
- Safety lock system
- The socket is be released from the ratchet by simple pressing the button.
- body entirely polished



1/2"

BLUE		RED		DIMENSION
CODE	ART.	CODE	ART.	
627084	190.8/2BI	627085	190.8/2BI-US	250

1/2"

BLUE		RED		DIMENSION
CODE	ART.	CODE	ART.	
611782	190.1/1ABI	625107	190.1/1ABI-US	260

## REVERSIBLE RATCHET 3/8"

- material: premium flex chrome vanadium steel
- body drop forged
- entirely hardened and tempered
- surface finish: chrome plated to standard ISO 1456:2009
- ergonomic heavy duty double component handle
- made according to standard ISO 3315

### ADVANTAGES:

- 75 - teeth
- 4,8° working angle
- Safety lock system
- The socket is be released from the ratchet by simple pressing the button.



3/8"

CODE	ART.	DIM
612501	238.1/1ABI	200

## SLIDING T-HANDLE 3/8"

- material: premium flex chrome vanadium steel
- entirely hardened and tempered
- surface finish: chrome plated according to ISO 1456:2009
- polished head
- made according to standard ISO 3315



3/8"

CODE	ART.	DIM
605341	238.3/1	165

## SLIDING T - HANDLE 1/2"

- material: premium flex chrome vanadium steel
- entirely hardened and tempered
- surface finish: chrome plated according to ISO 1456:2009
- made according to standard ISO 3315



1/2"

CODE	ART.	DIM
600876	190.3/1	300

## BITS AND SOCKETS SET

- Unior's bits and sockets set for bicycle service includes all the necessary items for the most common service on a bicycle.
- Smaller sockets and bits are 1/4" while the bigger ones are 3/8".
- To ensure the use of all of them on any of the ratchet or torque wrench size, the set also includes two convert adaptors - to use 1/4" on a 3/8" and the other way around.
- All items can be used on a ratchet or a torque wrench.
- All the items in the set are nicely arranged inside the SOS foam tray.

### THE SET CONTAINS:

- Torx bits sizes 25, 27 and 30
- Hex bits sizes 3, 4, 5, 6, 8, 10
- Socket sizes 8, 9, 10, 11, 12, 13, 14, 15
- Adaptors 1/4" - 3/8" and 3/8" - 1/4"



3/8"

CODE	ART.
624040	1782

## SOCKET 1/2", 6 POINT

- material: premium flex chrome vanadium steel
- drop forged, entirely hardened and tempered
- surface finish: chrome plated according to ISO 1456:2009
- polished
- made according to standard ISO 2725-1 (only metric dimension)
- made according to standard DIN 3124

CODE	ART.	DIM
605307	190/1 6p	8
610155		9
600851		10
600852		11
600853		12
600854		13
600855		14
600856		15
600857		16
600858		17
600859		18
600860		19
600861		20
600862		21
600863		22
600864		23
600865		24
600866		25
600867		26
600868		27
600869		28
610156		29
600871		30
600872		32



## SOCKET 1/4", 6 POINT

- material: premium flex chrome vanadium steel
- drop forged, entirely hardened and tempered
- surface finish: chrome plated according to ISO 1456:2009
- made according to standard ISO 2725-1 (only metric dimension)

CODE	ART.	DIM
618682	188/2 6p	3.2
600815		4
600816		4.5
600817		5
600818		5.5
600819		6
600820		7
600821		8
600822		9
600823		10
600824		11
603130		12
600825		13
603131		14



## HEX SOCKET 1/4"

- material: socket from premium flex chrome vanadium steel
- material: bit from premium plus carbon steel
- entirely hardened and tempered
- made according to standard DIN 7422 (only metric dimension)

CODE	ART.	DIM
625741	187/2HX	2,5
607898		3
607899		4
607900		5
607901		6
607902		7



## SCREWDRIVER SOCKET WITH TX PROFILE 1/4"

- material: socket from premium flex chrome vanadium steel
- material: bit from premium plus carbon steel
- entirely hardened and tempered



CODE	ART.	DIM
607903	187/2TX	TX 8
607904		TX 10
607905		TX 15
607906		TX 20
607907		TX 25
607908		TX 27
607909		TX 30
607910		TX 40



## HEX SOCKET 1/2"

- material: socket from premium flex chrome vanadium steel
- material: bit from premium plus carbon steel
- entirely hardened and tempered
- dimensions 17, 19, 22, 24 are used for the removal and fitting of front wheels
- made according to standard DIN 7422 (only metric dimension)



CODE	ART.	DIM
600978	192/2HX	4
603420		5
603421		6
603422		7
603423		8
605923		9
603424		10
603425		12
603426		14
624034		15
603427		17
603428		19



## HEX SCREWDRIVER SOCKET 3/8"

- material: socket from premium flex chrome vanadium steel
- material: bit from premium plus carbon steel
- entirely hardened and tempered
- made according to standard DIN 7422 (only metric dimension)



CODE	ART.	DIM
612082	236/2HX	4
612083		5
612084		6
612085		8
612086		10





## SOCKET WRENCH WITH T-HANDLE

- material: premium chrome vanadium steel
- handle - polypropylene
- surface finishing: blade chrome plated according to ISO 1456:2009



BLUE		RED		DIM
CODE	ART.	CODE	ART.	
608283	193N	625120	193N-US	5.5
608284		6		
608285		7		
608286		8		
608287		9		
608288		10		
608289		11		
608290		12		
608291		13		
608292		14		
608293		15		
608295		17		



## FLAT SCREWDRIVER TBI

- blade: premium hard chrome vanadium steel, entirely hardened and tempered
- blade chrome plated, black anodised tip
- handle: ergonomic shape
- three component material
- hanging hole
- made according to standard DIN ISO 2380-1:2006 and DIN ISO 2380-2:2006
- made according to standard DIN 5264



## CROSSTIP (PH) SCREWDRIVER TBI

- blade: premium hard chrome vanadium steel, entirely hardened and tempered
- blade chrome plated, blackened tip
- handle: ergonomic shape
- three component material
- hanging hole
- made according to standard ISO 8764-1,2
- made according to standard DIN 5260-PH



BLUE		RED		DIMENSION
CODE	ART.	CODE	ART.	
611701	615TBI	616443	613VDEBTBI	PH 0X60
611702		616444		PH 1X80
611703		PH 1X200		
611704		616445		PH 2X100
611705		PH 2X150		
611706		PH 2X200		

BLUE		RED		DIM
CODE	ART.	CODE	ART.	
611687	605TBI	616436	603VDEBTBI	0.4X2.5X75
611688		0.5X3.0X80		
		616437		0.5X3.0X100
611689		0.5X3.0X125		
611690		0.6X3.5X100		
612810		0.4X2.5X60		
612811		0.5X3.0X100		
612812		0.5X3.0X150		
612813		0.6X3.5X75		
		616438		0.6X3.5X100
611691		0.6X3.5X125		
611692		616439		0.8X4.0X100
612814		0.8X4.0X125		
611693		0.8X4.0X150		
611694		1.0X5.5X125		
612815		0.8X4.0X200		
612816		1.0X5.5X100		
		616440		1.0X5.5X125
611695		1.0X5.5X150		
611696		1.2X6.5X150		
612817		1.2X6.5X100		
612818		1.2X6.5X125		
		616441		1.2X6.5X150

## SOCKET WRENCH WITH TBI HANDLE

- blade: premium hard chrome vanadium steel, entirely hardened and tempered
- blade chrome plated
- handle: ergonomic shape
- three component material
- hanging hole
- made according to standard DIN 3125



CODE	ART.	DIMENSION
611751	629TBI	10
611749		8

## MAGNETIC TRAY

- Material: stainless steel, corrosion resistant
- keeps parts and tools right where you need them
- holds any small nuts, bolts and steel parts

### ADVANTAGES:

- powerful permanent magnet covers with protective rubber foot
- can be used in any position

### HOW TO USE THE TOOL:

- With its powerful rubber-protected magnet, this magnetic tray is suitable for practically all industrial applications ranging from car repair shops to everywhere where it can be attached to a metal surface. It can be used in all positions - the magnet is so powerful that the tray can even be fitted upside-down. The tray is intended for protecting screws, nuts and the like against being misplaced, and for storing them in a central location to minimise the time needed to find a specific item.
- for usage in garage, engine, household work



CODE	ART.	DIMENSION
619728	2086	150x40

## MEASURING TAPE

- plastic double component casing
- with stop and clip
- metal measuring tape



BLUE		RED		DIMENSION
CODE	ART.	CODE	ART.	
612790	710R	625129	710R-US	3 m

## MEASURING TAPE

- plastic double component casing
- with stop and clip
- preciseness to class II
- metal measuring tape



CODE	ART.	DIMENSION
612131	710P	2 m
612132		3 m
612133		5 m

## CALLIPER WITH VERNIER SCALE

- accuracy: 0,02mm/0,001"
- function: measurement of internal dimensions, of external dimensions, of depth, of steps
- made according to standard DIN 862
- dual scale in inch and mm



CODE	ART.	DIMENSION
612035	271	0-150mm

## DIGITAL CALLIPER

- accuracy: 0,02mm/0,001"
- measuring speed: 1.5m/sec
- function: measurement of internal dimensions, of external dimensions, of depth, of steps
- made according to standard DIN 862
- dual scale in inch and mm



CODE	ART.	DIMENSION
619881	270A	0-150mm

## ADJUSTABLE SPANNER WRENCH

- material: premium flex plus carbon steel
- pins: black finish
- entirely hardened and tempered
- surface finish: chrome plated according to ISO 1456:2009
- double plastic dipped handles
- The 2.3 and 2.8 mm pins are interchangeable, the distance between them is adjustable. The biggest difference between the pins is 50 mm open and 10 mm closed.



BLUE		RED		DIMENSION
CODE	ART.	CODE	ART.	
616294	253/2DP	624933	253/2DP-US	2.3, 3.8



## DEAD BLOW HAMMER

- metal balls in the head absorb the impact
- those granulate absorb the impact
- lacquered metal housing
- lacquered metal tubular handle with plastic grip
- polyurethane faces are unchangeable
- high security

### ADVANTAGES:

- Advantage over an ordinary hammer is that it doesn't bounce back from the object because of the steel granulate which absorb the impact.
- Steel balls in the hammer head prevents rebound and adds additional striking force.
- Less handle vibration while striking!

### USAGE:

- Hammer is used for mounting ball bearings, for furniture assembly, interior and exterior lay paving.
- Not recommended for use on sharp objects. Strike on sharp objects can damage polyurethane face of the hammer.

BLUE		BLACK		DIMENSION
CODE	ART.	CODE	ART.	
615034	819A	626485	819A-US	45



## BUMPING HAMMER

- material: polyuretán, hardness 45 - 55 shore D
- oil resistant
- grey cast head
- wooden handle, lacquered
- very tough and unbreakable material that allows versatility of use



CODE	ART.	DIM
605492		Ø 27
605493	820A	Ø 32
605494		Ø 40

## LOCKSMITHS' HAMMER

- material: premium flex plus carbon steel
- drop forged
- striking face and nose induction hardened
- surface finish: lacquered
- ash wood handle with special oval wedge
- made according to standard DIN 1041



CODE	ART.	DIM
601797		150
601799	812	200
601801		250

## HACKSAW

- light compact with ergonomically designed handle
- frame chrome plated, handle lacquered
- two blade position



CODE	ART.	DIMENSION
621531	750B	400

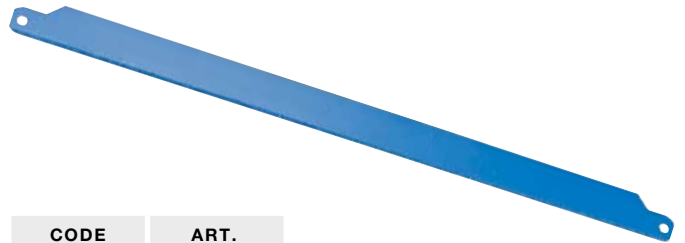
## SPARE BLADE FOR 750B, 2 PCS SET

- Material: HSS, Bi-metal
- 24 teeth/1"
- Length 300 mm



CODE	ART.	DIMENSION
621532	750.1B	2

## CARBON SAW BLADE FOR 750B, 2 PCS SET



CODE	ART.
623099	750.1CAR

## ROUND FILE WITH HANDLE, BASTARD

- material: premium hard plus carbon steel
- all files have second cut



BLUE		RED		DIMENSION
CODE	ART.	CODE	ART.	
613011	763HB	625714	763HB-US	200

## FLAT FILE WITH HANDLE, BASTARD

- material: premium hard plus carbon steel
- all files have second cut



BLUE		RED		DIMENSION
CODE	ART.	CODE	ART.	
612992	760HB	625715	760HB-US	200

## FLAT FILE WITH HANDLE, HALF SMOOTH

- material: premium hard plus carbon steel
- all files have second cut



CODE	ART.	DIMENSION
619295	760H1/2S	100
619296		150

## HALF-ROUND FILE WITH HANDLE, HALF SMOOTH

- material: premium hard plus carbon steel
- all files have second cut



CODE	ART.	DIMENSION
619307	761H1/2S	100
619308		150

## ROUND FILE WITH HANDLE, HALF SMOOTH

- material: premium hard plus carbon steel
- all files have second cut



CODE	ART.	DIMENSION
619319	763H1/2S	100
619320		150

## THREE-SQUARE FILE WITH HANDLE, HALF SMOOTH

- material: premium hard plus carbon steel
- all files have second cut



CODE	ART.	DIMENSION
619331	764H1/2S	100
619332		150

## SQUARE FILE WITH HANDLE, HALF SMOOTH

- material: premium hard plus carbon steel
- all files have second cut



CODE	ART.	DIMENSION
619343	765H1/2S	100
619344		150

## SET OF FILES, HALF SMOOTH IN CARTON BOX



CODE	ART.	DIMENSION
619468	762/5 1/2S	150



## IRONGATOR ENGINEER'S VICE

- housing from grey iron casting
- drop forged jaws from tool carbon steel, hardened and tempered
- lacquered housing, jaws anticorrosive oiled, other parts zinc plated
- spindle protected against damage
- uniPRO slides ensure precise running of moving parts
- engineer's vice can be combined with swivel base



CODE	ART.	DIMENSION
621564	721/6	80
621481		125
621567		150
621570		200

## SPARE ALUMINIUM JAWS FOR 721/6 AND 721Q/6

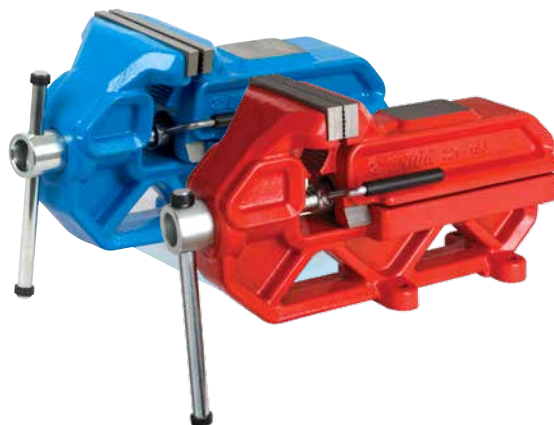
- material: aluminium
- set 2 pieces



CODE	ART.	DIMENSION
619027	722.1AL	150
619026		125

## QUICK IRONGATOR ENGINEER'S VICE WITH QUICK MOVING SYSTEM

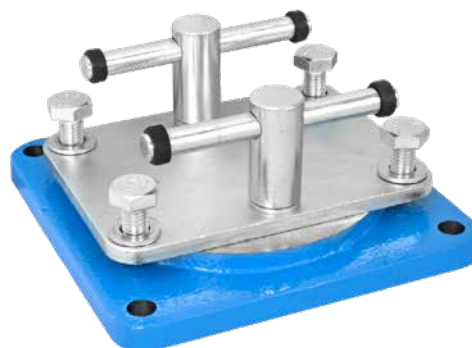
- housing from grey iron casting
- drop forged jaws from tool carbon steel, hardened and tempered
- lacquered housing, jaws anticorrosive oiled, other parts zinc plated
- uniPRO slides ensure precise running of moving parts
- engineer's vice can be combined with swivel base
- quick moving system



BLUE		RED		DIMENSION
CODE	ART.	CODE	ART.	
621482	721Q/6	625130	721Q/6-US	125
621568		625131		150

## SWIVEL BASE FOR 721/6 AND 721Q/6

- housing from grey iron casting
- material other parts: special tool steel
- swivel base can be rotated for 360°



CODE	ART.	DIMENSION
621566	721.1/6	80
621483		125
621569		150
621572		200

## COMBINATION WRENCH, LONG TYPE

- material: premium chrome vanadium steel
- drop forged, entirely hardened and tempered
- surface finish: chrome plated according to ISO 1456:2009
- polished head
- ring part with LIFE profile
- made according to standard ISO 7738 (metric dimensions only)



CODE	ART.	DIM
600361	120/1	10
600362		11
600363		12
600364		13
600365		14
600366		15
600367		16
600368		17
600369		18
600370		19
600371		20
600372		21
600373		22
600375		24
600378		27
600357		6
600358		7
600359		8
600360		9



## RATCHET COMBINATION WRENCH

- material: premium chrome vanadium steel
- drop forged, entirely hardened and tempered

### ADVANTAGES:

- ratchet: works both way, screw direction can be changed with button
- 72 - teeth, 5° working angle
- Stop ring on the ring part of the wrench prevents unexpected slip of the wrench from the nut and positioning back on the nut.
- It enables quick and easy tightening of the nut without causing damage to the user and quick, save and precise positioning of the wrench on the nut.



CODE	ART.	DIM
622820	160/2	10
622822		12
622823		13
622824		14
622825		15
622827		17
622829		19
622818		8
622819		9



## ELECTRICIANS' SCISSORS

- material: premium flex plus carbon steel
- drop forged
- cutting edges induction hardened
- surface finish: nickel plated
- handles plastic dipped



BLUE		RED		DIM
CODE	ART.	CODE	ART.	
601127	582/3P	628278	582/3P-US	150

## RATCHET FOR BITS 6,3

- material: premium flex chrome vanadium steel
- body drop forged
- entirely hardened and tempered
- surface finish: chrome plated to standard ISO 1456:2009
- ergonomic heavy duty double component handle
- for bits 6,3 mm



BLUE		RED	
CODE	ART.	CODE	ART.
625355	188.1/1BBI	628277	188.1/1BBI-US

## REVERSIBLE RATCHET 1/4"

- material: premium flex chrome vanadium steel
- body drop forged
- entirely hardened and tempered
- surface finish: chrome plated to standard ISO 1456:2009
- ergonomic heavy duty double component handle
- made according to standard ISO 3315

### ADVANTAGES:

- with 40 - teeth
- 9° working angle
- Safety lock system
- The socket is released from the ratchet by simple pressing the button.



1/4"

BLUE		RED		DIM
CODE	ART.	CODE	ART.	
611901	188.1/1ABI	625106	188.1/1ABI-US	1/4"

## ADAPTOR 1/4"

- material: premium flex chrome vanadium steel
- drop forged, entirely hardened and tempered
- surface finish: chrome plated according to ISO 1456:2009
- made according to standard ISO 3316



1/4" 3/8" 1/2"

CODE	ART.	DIMENSION
607976	188.7/2	1/4" - 3/8"

## SET OF 10 SPARE BLADES FOR UTILITY KNIFE 556A AND 556B

- blade can only be moved with cutting block forward
- when the blade is blunt, it can be snapped off
- when the last blade has been used, the remnant of the blade can be removed by pushing cutting block forward
- new blade can be inserted with by pushing cutting block backwards



CODE	ART.	DIMENSION
612137	556.1B	18

## SOCKET SET 1/4" IN PLASTIC BOX

- Dimension of box: 244 x 207 x 59

### SET INCLUDES:

- 11x socket 1/4", 12 point (article 188/2 12P) dim. 4, 4.5, 5, 5.5, 6, 7, 8, 9, 10, 11, 13
- accessories 1/4"; 1x swivel handle, 1x sliding T - handle, 2x extension bar (55, 150mm)



1/4"

RED		DIM
CODE	ART.	
626780	188BI6P15-US	4 - 13/15

## ADAPTOR 3/8"

- material: premium flex chrome vanadium steel
- drop forged, entirely hardened and tempered
- surface finish: chrome plated according to ISO 1456:2009
- polished head
- made according to standard ISO 3316
- code 605345 do not have polished heads



3/8" 1/2" 1/4" 1/2"

CODE	ART.	DIMENSION
607977	238.7/1	3/8" - 1/4"

## UTILITY KNIFE

- double component handle
- 8 automatic exchangeable snap-off blades inside the handle
- blade with 13 snap-off blades
- blade from high alloy steel



CODE	ART.	DIMENSION
612136	556B	18



## HEX SCREWDRIVER CR

- blade: premium hard chrome vanadium steel, entirely hardened and tempered
- blade: blackened
- handle: ergonomic shape
- handle - polypropylene
- hanging hole



CODE	ART.	DIMENSION
617128	620/1CR	2
617129		2.5
617130		3



## INSULATED SOCKET WRENCH WITH VDE TBI HANDLE

- blade: premium hard chrome vanadium steel, entirely hardened and tempered
- handle: ergonomic shape
- three component material
- hanging hole
- made according to standard EN60900
- made according to standard DIN 3125



RED		DIMENSION
CODE	ART.	
616468	629VDETBI	10
616467		8



## BUMPING HAMMER

- material: cellidor, hardness 60-70 shore D
- oil resistant
- grey cast head
- wooden handle, lacquered
- intended for working soft and easily damaged materials

CODE	ART.	DIMENSION
601834	820	32



MADE  
FOR  
WORK.



**E**

PLIERS

## SCREW PLIERS

- Use Screw pliers to loose and unscrew screws that have damaged head profile and cannot be unscrewed with standard tools. Damage on the screw's profile usually occurs when screws are stuck due to gluing or corrosion and standard tool strips the profile. Pliers have horizontal and also vertical serrated teeth, which grab the screw by the outer diameter of the head. Teeth are strong and very sharp and provide excellent grip on screw's head, regardless of its profile. Pliers can be used on screw heads with diameter from 3 to 11 mm.
- material: premium plus carbon steel
- drop forged, entirely hardened and tempered
- head surface finish: finely ground
- surface finish: phosphated to standard ISO 9717
- double plastic dipped handles

### ADVANTAGES:

- double serrated jaws, horizontal and vertical
- multipurpose use
- for screws head with diameter from 3 to 11 mm
- length of pliers enable easier unscrewing



**NEW**

  $\Phi 3 \sim \Phi 11\text{mm}$

BLUE		RED		DIMENSION
CODE	ART.	CODE	ART.	
628800	407/4DP	629036	407/4DP-US	170

## CABLE HOUSING CUTTERS

- Pliers developed specially for cutting shift and brake housing. Pliers cut precise and smooth without deformation to the cable housing and feature a build in crimping function for cable end caps. Locking mechanism keeps pliers closed for the easier storing. To unlock the locking mechanism simply squeeze and release the pliers.
- In order to preserve the ultimate cutting performance, we highly advice not to use pliers for cutting shift/brake wires and spokes.



BLUE		RED		DIMENSION
CODE	ART.	CODE	ART.	
628147	584/4BI	628148	584/4BI-US	180

## CABLE PULLER PLIERS WITH LOCK

- material: premium plus carbon steel
- surface finish: chrome plated according to ISO 1456:2009
- double plastic dipped handles

### HOW TO USE THE TOOL:

- The basic function of the inner wire pliers is to tension brake and derailleur steel cables. It is used for holding the inner cable and pulling it out of the housing. The safety lock is activated with a thumb push. The pliers can now be released and the cable fixed. The lock is automatically released by squeezing handles together. The additional safety lock enables easier, faster and more comfortable use.



BLUE		RED		DIM
CODE	ART.	CODE	ART.	
619719	1642.1/2P	624917	1642.1/2P-US	185

## MASTER LINK PLIERS

- material: premium flex plus carbon steel
- surface finish: chrome plated to standard ISO 1456:2009
- Tool can be used by professional or amateur mechanics
- Master link pliers are for commonly used chains with master link, SRAM Powerlink or the KMC Missing Link. After chain use and due to mud and rust, it can be impossible to remove the master link with only your hands. With Unior 1720/2DP Master Link pliers, removal of the master link is easy.



BLUE		RED		DIM
CODE	ART.	CODE	ART.	
623296	1720/2DP	624907	1720/2DP-US	177

## CHAIN RIVET PLIERS

- material: premium flex plus carbon steel
- drop forged, entirely hardened and tempered
- surface finish: chrome plated according to ISO 1456:2009
- pin induction hardened
- double plastic dipped handles
- The chain rivet pliers have been developed to enable both professional and home mechanics to work quickly and safely on bicycle chains. Higher functionality and practicality are the advantages of the chain rivet pliers and with this unique design less physical effort is required to extract the rivet from the chain. Jobs will be performed quickly and comfortably without damage to the rivet or chain plate. The ergonomic design enables single handed use.



BLUE		RED		DIM
CODE	ART.	CODE	ART.	
615377	1640/1DP	624914	1640/1DP-US	240

## REPLACEABLE PIN FOR CHAIN RIVET PLIERS

- material: premium flex plus carbon steel
- surface finish: blacken to standard DIN 50938
- pin induction hardened



CODE	ART.
605956	1640.1/4



## TIRE SETTER

- material: premium plus carbon steel
- drop forged, entirely hardened and tempered
- surface finish: chrome plated to standard ISO 1456:2009
- double plastic dipped handles
- The pliers are intended for fast straightforward tire removal - especially tires that have already bonded with the rim. Using the pliers, we compress the tire so that it detaches from the bead of the rim. A strong grip facilitates the removal of the tires. The well designed shape of the pliers enables the separation of the tire from the rim and ensures that the inner tube is not punctured when removing the tire. The pliers are chromed and laminated with plastic for a more comfortable grip.



BLUE		RED		DIMENSION
CODE	ART.	CODE	ART.	
617586	1601/2DP	624948	1601/2DP-US	300

## DIAGONAL CUTTING NIPPERS

- material: premium plus carbon steel
- drop forged, entirely hardened and tempered
- cutting edges induction hardened
- head polished
- surface finish: chrome plated to standard ISO 1456:2009
- heavy duty double - component handles
- made according to standard ISO 5749 and EN 60900



BLUE		RED		DIMENSION
CODE	ART.	CODE	ART.	
607883	461/1BI	610426	461/1VDEBI	140
607884		610427		160

## COMBINATION PLIERS

- material: premium plus carbon steel
- drop forged, entirely hardened and tempered
- cutting edges induction hardened
- head polished
- surface finish: chrome plated to standard ISO 1456:2009
- heavy duty double - component handles
- made according to standard ISO 5746 and EN 60900



BLUE		RED		DIMENSION
CODE	ART.	CODE	ART.	
607870	406/1BI	610421	406/1VDEBI	160
607871		610422		180
607872		610423		200
608354		610424		220

## LONG FLAT NOSE PLIERS

- material: premium plus carbon steel
- drop forged, entirely hardened and tempered
- head polished
- surface finish: chrome plated to standard ISO 1456:2009
- heavy duty double - component handles
- gripping surface serrated
- made according to standard ISO 5745 and EN 60900



BLUE		RED		DIMENSION
CODE	ART.	CODE	ART.	
607878	472/1BI	610430	472/1VDEBI	140
607879				160

## LONG NOSE PLIERS WITH SIDE CUTTER AND PIPE GRIP, BENT

- material: premium plus carbon steel
- drop forged, entirely hardened and tempered
- cutting edges induction hardened
- head polished
- surface finish: chrome plated to standard ISO 1456:2009
- heavy duty double - component handles
- made according to standard EN 60900

### ADVANTAGES:

- the long bent jaws enable simple and precise clenching of nuts and screws
- the strong jaws enable good grip
- jaws bent to an angle of 45°
- gripping surface serrated



BLUE		RED		DIMENSION
CODE	ART.	CODE	ART.	
607966	512/1BI	610438	512/1VDEBI	170
607967		610439		200

## WATERPUMP BOX JOINT PLIERS

- material: premium chrome vanadium steel
- drop forged, entirely hardened and tempered
- surface finish: chrome plated to standard ISO 1456:2009
- heavy duty double - component handles

### ADVANTAGES:

- jaw aperture adjustable in 7 positions
- jaws are always parallel to protect the work piece from being damaged
- 449.1 additional plastic jaws for work on chromed and polished work pieces



BLUE		RED		DIMENSION
CODE	ART.	CODE	ART.	
615032	449/1PYTHON	625713	449/1PYTHON-US	240

## VARIABLE JOINT "HYPO" PLIERS

- material: premium chrome vanadium steel
- working surfaces induction hardened
- surface finish: chrome plated according to ISO 1456:2009
- heavy duty double - component handles
- drop forged, entirely hardened and tempered

### ADVANTAGES:

- The Hypo pliers are self-adjusting for which it is not necessary to preset the width of the jaws.
- one hand self-adjusting operation
- The pliers adapt perfectly to the work piece.
- maximum jaw aperture up to Ø40 mm.
- The locking mechanism enables easier storage when the pliers are not in use.



CODE	ART.	DIMENSION
611780	442/1HYPO	240

## PLASTIC JAW FOR 449/1PYTHON



CODE	ART.	DIMENSION
615033	449.1	240

## EXTERNAL LOCK RINGS PLIERS, STRAIGHT

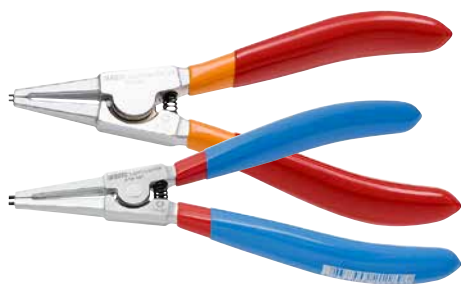
- material: premium plus carbon steel
- drop forged, entirely hardened and tempered
- head polished
- surface finish: chrome plated according to ISO 1456:2009
- tips black finish
- double plastic dipped handles
- made according to standard DIN 5254 form A

### ADVANTAGES:

- 30% higher endurance in comparison to convenient lock rings pliers
- with inserted tips
- for diameter 3 to 100mm

### USAGE:

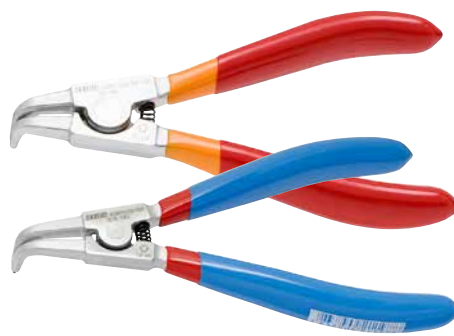
- for fitting circlips on shafts



BLUE		RED		DIMENSION
CODE	ART.	CODE	ART.	
621187	532PLUS/1DP	625125	532PLUS/1DP-US	140 x 3 - 10

## EXTERNAL LOCK RINGS PLIERS, BENT

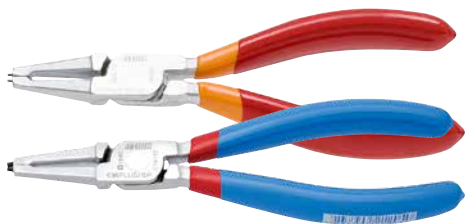
- material: premium plus carbon steel
- drop forged, entirely hardened and tempered
- head polished
- surface finish: chrome plated to standard ISO 1456:2009
- tips black finish
- made according to standard DIN 5254 form B
- double plastic dipped handles



BLUE		RED		DIMENSION
CODE	ART.	CODE	ART.	
621195	534PLUS/1DP	625126	534PLUS/1DP-US	140 x 3 - 10

## INTERNAL LOCK RINGS PLIERS, STRAIGHT

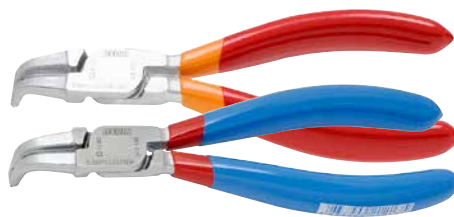
- material: premium plus carbon steel
- drop forged, entirely hardened and tempered
- head polished
- surface finish: chrome plated according to ISO 1456:2009
- tips black finish
- double plastic dipped handles
- made according to standard DIN 5256 form C



BLUE		RED		DIMENSION
CODE	ART.	CODE	ART.	
621203	536PLUS/1DP	625127	536PLUS/1DP-US	140 x 8 - 13

## INTERNAL LOCK RINGS PLIERS, BENT

- material: premium plus carbon steel
- drop forged, entirely hardened and tempered
- head polished
- surface finish: chrome plated to standard ISO 1456:2009
- tips black finish
- double plastic dipped handles
- made according to standard DIN 5256 form D



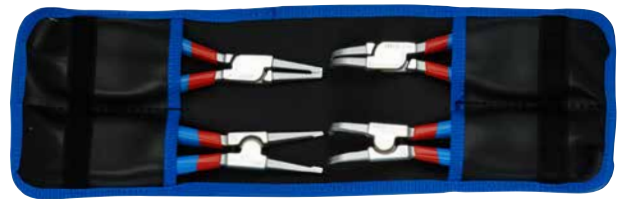
BLUE		RED		DIMENSION
CODE	ART.	CODE	ART.	
621211	538PLUS/1DP	625128	538PLUS/1DP-US	140 x 8 - 13



## SET OF LOCK RINGS PLIERS PLUS IN BAG

### SET INCLUDES:

- 2x external lock rings pliers, straight and bent, dim. 140 (3 - 10mm)
- 2x internal lock rings pliers, straight and bent, dim. 140 (8 - 13mm)



CODE	ART.	DIMENSION
621623	539PLUS/1DPCT	140 x 8 - 13

## LONG NOSE PLIERS WITH SIDE CUTTER AND PIPE GRIP, STRAIGHT

- material: premium plus carbon steel
- drop forged, entirely hardened and tempered
- cutting edges induction hardened
- head polished
- surface finish: chrome plated to standard ISO 1456:2009
- heavy duty double - component handles
- made according to standard ISO 5745 and EN 60900

### ADVANTAGES:

- also for clenching and separating of from cables and other sensitive objects
- gripping surface serrated



BLUE		RED		DIMENSION
CODE	ART.	CODE	ART.	
607876	508/1BI	610436	508/1VDEBI	170





**MADE  
FOR  
WORK.**



**F**

**TORQUE WRENCH & ACCESSORIES**

## CLICK TYPE TORQUE WRENCH



- reversible ratchet head
- Torque application: one-way, but always apply in direction specified on torque wrench handle
- ratchet operates in clockwise and anti-clockwise directions
- for tightening on right hand threaded bolts and nuts
- unmistakable signal when set torque is reached
- Default value for the recalibration interval is 12 month of use, or approximately 5.000 cycles!
- made according to standard ISO 6789
- dual scaled, Nm and Kgm

### IMPORTANT!

- Do not use torque wrench for untightening!
- Torque tightens only in the direction showed on the key sticker! Sticker shows the proper direction of tightening!
- The default calibration interval of the torque wrench is 12 months or 5.000 measurements from the date of end user purchase.
- ALWAYS set the measuring mechanism to starting point, at the end of work.
- When the requested torque is reached, please do not tight any more.
- Torque wrench can be damaged, if manual instructions are not considered.

CODE	ART.	DIMENSION
615485	264	1/4" x 2 - 24
615486		3/8" x 5 - 110

## ELECTRONIC TORQUE WRENCH



- Torque wrench specially designed for work on bikes. Both versions in a size to best fit the intended use, precise and easy to use. Smaller version features a 1/4" square drive and will allow you to work on even the most hidden bolts with low torque values. Bigger version features 1/2" square drive and will accept all our bottom bracket sockets, suspension top cap sockets and cassette lock rings without any adaptors.
- antislip handle
- target torque warning: buzzer + 2 LED lights
- operation mode: peak hold / track
- unit selection: N-m, in-lb, ft-lb, kg-cm
- gear teth: 60
- battery: 1xAAA (not included), compatible with rechargeable battery
- warranty: 10.000 cycle / one year
- auto power off after 5 min

CODE	ART.	SQUARE DRIVE (INCHES)	RANGE (Nm)	ACCURACY	RESOLUTION
627784	266B	1/4"	1-20Nm	CW: +/- 3% CCW: +/- 4%	0,01 Nm, 0,01 ft-lb 0,01 in-lb, 0,1 kg-cm
627785		1/2"	4,3-85Nm	CW: +/- 3% CCW: +/- 4%	0,01 Nm, 0,01 ft-lb 0,01 in-lb, 0,1 kg-cm



## BITS AND SOCKETS SET



- Uniior's bits and sockets set for bicycle service includes all the necessary items for the most common service on a bicycle.
- Smaller sockets and bits are 1/4" while the bigger ones are 3/8".
- To ensure the use of all of them on any of the ratchet or torque wrench size, the set also includes two convert adaptors - to use 1/4" on a 3/8" and the other way around.
- All items can be used on a ratchet or a torque wrench.
- All the items in the set are nicely arranged inside the SOS foam tray.

### THE SET CONTAINS:

- Torx bits sizes 25, 27 and 30
- Hex bits sizes 3, 4, 5, 6, 8, 10
- Socket sizes 8, 9, 10, 11, 12, 13, 14, 15
- Adaptors 1/4" - 3/8" and 3/8" - 1/4"

CODE	ART.
624040	1782





**G**

**BOTTOM BRACKET TOOLS**





## BOTTOM BRACKET WRENCH 16 NOTCH

- material: premium flex plus carbon steel
- surface finish: chrome plated according to ISO 1456:2009
- ergonomic heavy duty double component handle

### HOW TO USE THE TOOL:

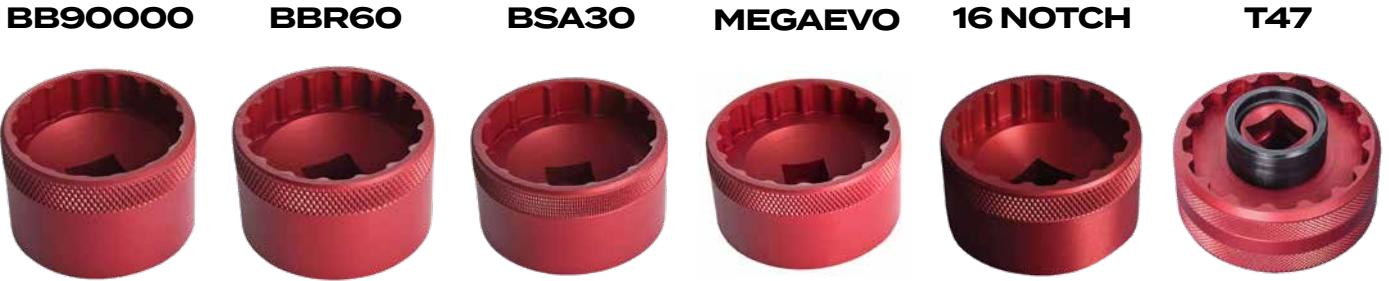
- The wrench is used to remove and install Shimano® Hollowtech II, Campagnolo® Ultra-Torque and Power Torque, Race Face®, FSA®, SRAM®, Truvativ®, Chris King® bottom brackets as well as many and others. Small wrench is included for removal and installation of Shimano plastic bolts that are used on the Hollowtech II cranksets. The 1609/2BI wrench also fits on the external centerlock disc nut.

BLUE		RED		DIMENSION
CODE	ART.	CODE	ART.	
615536	1609/2BI	624903	1609/2BI-US	140 x 3 - 10

# BOTTOM BRACKET SOCKET

All models of bottom bracket sockets are precision CNC machined tools for installation and removal of different external bottom bracket cups. They are made of aluminum billet and anodized red for durable finish and precise fit, that won't damage aluminum external bottom bracket cups.

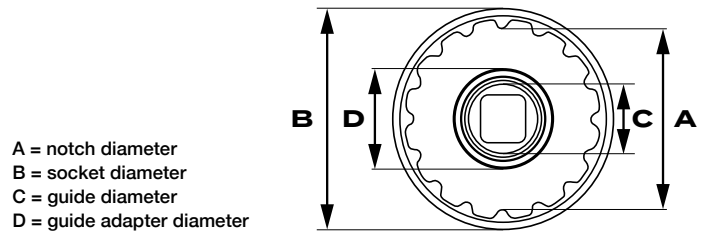
Knurling on the side of the socket creates better grip when threading cups by hand, meanwhile 1/2" square drive makes it easy to use with torque wrenches, ratchets and fixed handles.



CODE	ART.	CODE	ART.	CODE	ART.	CODE	ART.	CODE	ART.	CODE	ART.
627619	1671.BB9000	627620	1671.BBR60	627621	1671.BSA30	627622	1671.MEvo	627623	1671.16N	628495	1671.T47

BOTTOM BRACKET		UNIOR TOOL					
MANUFACTURER	MODEL	1671.BSA30	1671.BBR60	1671.BB9000	1671.MEGAevo	1671.16N	1671.T47
Campagnolo	Fits most models					X	
Chris King	Fits most models					X	
Chris King	Thread fit T47 30X & 24X						X
Enduro	T47 with OD 52.2 mm						X
Enduro	TorqueTite PF30 with OD 52.2 mm						X
FSA	MegaEvo				X		
FSA	MegaExo					X	
Praxis	T47*						X
Race Face	Cinch	X					
Race Face	X-Type					X	
Rotor	BSA30						
Shimano	BBR60		X				
Shimano	Dura-Ace 9000			X			
Shimano	Hollowtech II					X	
Shimano	MT60		X				
Shimano	XTR BB93			X			
SRAM	DUB T47						X
SRAM	DUB	X					
SRAM / Truvativ	GXP					X	
Zipp	Vuma	X					
Hawk Racing	BB3086	X					
Wheels Mfg	PF30				X		
Wheels Mfg	T47						X

\* 1671.T47 is not compatible with Praxis T47 GXP non drive side cup.



UNIOR BOTTOM BRACKET SOCKETS SPECIFICATIONS					
TOOL	# NOTCHES	NOTCH DIAMETER	SOCKET DIAMETER	GUIDE DIAMETER	GUIDE ADAPTER DIA.
1671.BSA30	12	44,2	53	/	/
1671.BBR60	16	39	47	/	/
1671.BB9000	16	39,4	45	/	/
1671.MEVO	16	46,4	56	/	/
1671.16N	16	42,7	52	/	/
1671.T47	16	49	60	23,8	28,8
1671.T47	12	46,6	60	23,8	29,8*

## CRANK CAP TOOL METAL

- Strong magnet in the back of the wrench, enables the tool to be stored on a convenient place.
- Tool can be used by hand or with help of wrench size 13 mm.

### HOW TO USE THE TOOL:

Tool is used for removal and installation of Shimano plastic bolts that are used on the Hollowtech II cranksets.



CODE	ART.
623120	1609.1/2

## CRANK CAP TOOL

- Works on Shimano Hollowtech II cranks.
- Tool is used for removal and installation of Shimano plastic bolts that are used on the Hollowtech II cranksets.
- The tool can be used by hand or with the 8 mm hex wrench.



CODE	ART.
627017	1609.1

## OPEN BOTTOM BRACKET WRENCH 16 NOTCH

- material: premium flex plus carbon steel
- surface finish: chrome plated according to ISO 1456:2009
- Tool also fits the disc brake rotor nuts with 16 external notches.

### HOW TO USE THE TOOL:

The open bottom bracket wrench is used to remove and install Shimano® Hollowtech II, Campagnolo® Ultra-Torque and Power Torque, Race Face®, FSA®, SRAM®, Truvativ®, Chris King® bottom brackets as well as many and others. The 1609/2HOBBY wrench also fits on the external centerlock disc nut.



BLUE		RED	
CODE	ART.	CODE	ART.
623424	1609/2HOBBY	624935	1609/2HOBBY-US





## CARTRIDGE BOTTOM BRACKET WRENCH

- material: premium flex plus carbon steel
- ergonomic heavy duty double component handle
- It is composed of wrench, product no. 1671.1, screw with nut and handle.
- The double threaded screw enables you to use this tool for Shimano standard bottom brackets as well as for Shimano Octalink and Truvativ bottom brackets.

### HOW TO USE THE TOOL:

This tool allows you to thread the wrench into the axle with the additional screw. This prevents the wrench from slipping and damaging the bottom bracket nut. Work is made easy by the 350 mm long handle with the two part ergonomic sleeve. The same procedure can be used for installation. The screw is 24 mm AF and is used with a 24 mm wrench or with a torque wrench. The handle can be taken down if necessary.

BLUE		RED	
CODE	ART.	CODE	ART.
623087	1671.8/2BI	624919	1671.8/2BI-US



## ADJUSTABLE CUP WRENCH, FOR OLDER BOTTOM BRACKET MODELS

- material: premium flex plus carbon steel

### HOW TO USE THE TOOL:

The wrench is used for installing and removing of older bottom brackets. The wrench fits perfectly in the hand while the slim body and gap form enable quick and efficient installation and removal of older types of bottom brackets. The length of the wrench is 204 mm.

CODE	ART.
618414	1672/2



## BB30 & DUB REMOVAL TOOL

- The tool is designed to remove the non-threaded BB30 & Sram DUB bottom brackets from the frame. The tool safely pulls bottom bracket cups out of the frame without the use of a hammer. It features two interchangeable dedicated pullers, a 30mm puller for BB30 standard and 29 mm puller for Sram DUB press fit bottom brackets. When using the tool with a 30 mm puller, the tool is also compatible with many other bottom bracket standards using bearings with 30 mm internal diameter. The rubber O-ring on the tool ensure the safe usage of the tool keeps the frame getting scratched.



CODE	ART.
626282	1625/2

## BB90 REMOVAL TOOL

- This tool is designed to remove the non-threaded bottom bracket bearings and cups of the BB90 bottom bracket system. It also supports other press fit standards with 24mm spindle, such as BB86, BB92, SRAM Press Fit GXP. The removal tool will pull the bearings & cup from the frame. Carefully insert the guide head of removal tool trough the bottom bracket cup (marked green).



CODE	ART.
623085	1625/2BB90



## BOTTOM BRACKET SHELL INSTALLATION TOOL

- material: premium flex plus carbon steel
- surface finish: blacken to standard DIN 50938

### HOW TO USE THE TOOL:

This tool is used for the installation and removal 35.8 mm and 36.3 mm bottom bracket shell. It is made of precision tool steel with heat treatment and surface protection. The advantage of the tool is that it prevents slipping off the shell.



CODE	ART.
616293	1607/4

## CAMPAGNOLO POWER AND ULTRA TORQUE FULL SET, ALSO FOR FULCRUM ULTRA TORQUE

This full set includes complete crank and bearing removal and installation tools for Campagnolo® and Fulcrum® Ultra Torque crank sets as well as for Campagnolo® Power Torque system.



CODE	ART.
623207	1626A

## CARTRIDGE BOTTOM BRACKET TOOL 8 TOOTH

- material: premium flex plus carbon steel
- 1/2" square drive makes it easy to use with ratchets, fixed handles and torque wrenches

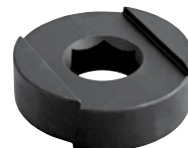
### COMPATIBLE WITH:

Shimano Octalink® bottom brackets with outside notches, Bontrager® and Truvativ® ISIS Drive® type bottom brackets Bosch® Generation 3 and Generation 4 E-bike system front chainring locking



CODE	ART.
616069	1671.2/4

## SPARE HEAD FOR 1607/4



CODE	ART.
623383	1607.1/4

## CARTRIDGE BOTTOM BRACKET TOOL 20 TOOTH

- material: premium flex plus carbon steel
- For: Shimano®, ISIS®

### HOW TO USE THE TOOL:

Use it together with the Unior 1/2" ratchet 190.1ABI



CODE	ART.
616068	1671.1/4

## BOTTOM BRACKET WRENCH BSA30

- The tool has a professional double injected plastic handle, which enables strong grip and great comfort.
- Wrench is used to install or remove BSA30 external cups. Can also be used with a 1/2" torque wrench.
- Unior's BSA30 bottom bracket wrench works on the new BSA30 standard bottom brackets which you can find on Rotor®, DUB, Zipp® and RaceFace® systems.



BLUE		RED	
CODE	ART.	CODE	ART.
624037	2620/2BI	628596	2620/2BI-US

MADE  
FOR  
WORK.



## CRANK PULLER WITH HANDLE

The crank puller is used for removing Shimano Octalink and ISIS cranks as well as for standard square spindle cranks. A strong handle enables quick and easy use. The product enables optimal efficiency and is suitable for both professionals and home users.



BLUE		RED	
CODE	ART.	CODE	ART.
623088	1661.3/4DP	624918	1661.3/4DP-US

## CRANK PULLER

- material: premium flex plus carbon steel
- drop forged, entirely hardened and tempered
- Surface finish: blacken

### HOW TO USE THE TOOL:

The crank puller is designed to remove standard square spindle cranks. With help of the included adaptor other standards such as ISIS and Octalink cranks can also be removed.



CODE	ART.	DIMENSION
615529	1661/4	14 mm

## TAPERED CRANK PULLER

- material: premium flex plus carbon steel
- This crank puller is used to remove cranks with damaged inner threads when the crank cannot be removed with a normal crank puller.



CODE	ART.
619707	1662/4

## CRANK CAP TOOL METAL

- Strong magnet in the back of the wrench, enables the tool to be stored on a convenient place.
- Tool can be used by hand or with help of wrench size 13 mm.

### HOW TO USE THE TOOL:

Tool is used for removal and installation of Shimano plastic bolts that are used on the Hollowtech II cranksets.



CODE	ART.
623120	1609.1/2

## CRANK PULLER FOR SHIMANO® XTR FC-M970

- material: premium flex plus carbon steel

### HOW TO USE THE TOOL:

The crank puller is used for removing XTR FC-M970 cranks. To use, remove the plastic ring on the outside of the crank by using four pins on the left puller side. Unthread the nut on the inner crank side with the plastic clamp. Thread the puller with its right side into the crank and use a hex wrench to unthread the nut holding the crank. Now thread the puller, attached with its inner side to the crank nut until it is released from the crank. The product enables optimal efficiency and is suitable for both professionals and enthusiast mechanics.



CODE	ART.
619710	1664



## RATCHET WRENCH

- material: premium flex plus carbon steel
- ergonomic heavy duty double component handle
- 75 - teeth
- Interchangeable sockets: 14 mm and 15 mm

The ratcheting nut wrench is made for tightening and loosening nuts of 14 and 15 mm dimensions. Special pins prevent the loss of the socket. The design of the Unior ratcheting hub nut wrench enables working in hard to reach places. New shape enables higher torque, reduces physical effort and ensures a longer working life of the tool. Maximum torque is assured by the shape of the handle. The perfect ergonomic fit to the hand makes it easy and comfortable to work with.



BLUE		RED		DIMENSION
CODE	ART.	CODE	ART.	
615248	1621/1BI	624942	1621/1BI-US	14 x 15

## RATCHET WRENCH

- material: premium flex plus carbon steel
- 75 - teeth
- ergonomic heavy duty double component handle
- The ratchet has an interchangeable HX8mm screwdriver socket and 14mm socket. Both are used for crank nuts.



BLUE		RED		DIMENSION
CODE	ART.	CODE	ART.	
616288	1621/1ABI	624943	1621/1ABI-US	14 x HX8







## CHAINRING NUT WRENCH

- material: premium flex plus carbon steel
- surface finish: chrome plated according to ISO 1456:2009
- The dimension of the hexagonal key opening is SW10. It enables unscrewing and tightening of nuts of this dimension, while at the same time it can be used to hang the key.

### HOW TO USE THE TOOL:

The wrench is used for unscrewing and tightening of front chain ring nuts. The tightening starts with the broader part, and when the nut is sufficiently tightened, it finishes with the narrower part which is bent in order to enable more secure power transfer during the final tightening of the nut. When unscrewing the nut, the key is used in the reverse order.



CODE	ART.
618415	1668/2

## CHAIN RING TRUING FORK

- material: premium flex plus carbon steel
- The tool is used for repairing minor damage on the front chain rings. The narrow opening is intended for truing a tooth, the broader for truing the crank spider.

CODE	ART.
619704	1667/2



MADE  
FOR  
WORK.



PEDAL TOOLS



## PRO PEDAL WRENCH

- material: premium flex plus carbon steel
- surface finish: chrome plated according to ISO 1456:2009
- drop forged, entirely hardened and tempered
- ergonomic heavy duty double component handle

### HOW TO USE THE TOOL:

The professional pedal wrench has two 15 mm openings set at offset angles to easily remove pedals regardless of the pedal axle position. The design and finish ensures durability, strength and precision. The extra long handle provides the leverage to remove even the tightest pedals. Of course there is a bottle opener included for the most difficult workshop activity.



BLUE		RED		DIMENSION
CODE	ART.	CODE	ART.	
615537	1613/2BI	624961	1613/2BI-US	15

## PEDAL WRENCH

- Laser cut from same tool steel as our Pro shop pedal wrench, heat treated for strength and durability. Pedal wrench features ergonomically shaped double dipped handle for comfort and enough leverage to loosen all the hard tighten pedals. 15 mm opening is laser cut with precision and perfect angle to help you loosen the pedals as easy as possible.
- Made from laser cut tool steel
- Heat-treated for strength and lasting performance
- Double dipped ergonomic handle for comfort
- 270mm of length for extra leverage
- Small and light weight, perfect for toolbox and traveling



BLUE		RED		DIMENSION
CODE	ART.	CODE	ART.	
628517	1613/2DP	628518	1613/2DP-US	15

## PEDAL GENIE

- Pedal Genie is used as a substitute for pedals while adjusting derailleurs on a bicycle without pedals. It's especially useful for building new bikes that usually come without pedals.
- The tool features a strong double injected handle, which enables comfortable and efficient grip.
- The Pedal Genie comes with two adaptors that offer two different ways of use. Threaded version for more efficient work and a conical version for quick checks.
- Threaded part is designed to work on the drive-side crank only (9/16" x 20 tpi thread).



BLUE		RED	
CODE	ART.	CODE	ART.
627328	2650BI	627766	2650BI-US

## DOUBLE ENDED PEDAL WRENCH

- material: premium chrome vanadium steel
- surface finish: chrome plated according to ISO 1456:2009
- drop forged, entirely hardened and tempered

### HOW TO USE THE TOOL:

Pedal wrench is intended for quick, simple and effective assembly and disassembly of the pedals. Extremely long and slim body as well as specially designed jaw enable perfect adaptability to the pedals. Higher speed and safety by screwing and unscrewing the pedals compared to the traditional open end wrench ensures comfortable working without damage. The pedal wrenches are available in three different dimensions: 15 x 15 for pedals, while 15 x 17 and 15 x 9/16" for hubs.



CODE	ART.	DIMENSION
615011	1610/2	15 x 15
615127		15 x 9/16



## CRANK SAVER KIT

- Crank Saver - Pedal thread repair and insert kit
- No more problems with stripped pedal mounting threads on the cranks. With the help of our Crank Saver Kit you can repair stripped threads and save your beloved cranks.
- First use reaming taps and create oversized 5/8"×24 TPI threads in the crank arms. Thoroughly clean the threads, then apply thread locker to the insert and install it into the crank arm. Finally, thread the pedal into the insert.
- For detailed instructions on Crank Saver Kit usage and inserts installation check the video below.

### KIT INCLUDES:

- Left and right reaming tap 5/8"×24 TPI
- 10 pedal thread inserts for left crank arm
- 10 pedal thread inserts for right crank arm
- Kit comes in the metal box with cut out SOS foam trays, so each of the pieces will be always in the right place.



BLUE		RED	
CODE	ART.	CODE	ART.
626979	1695MB1	626980	1695MB1-US

## PEDAL TAPS

- material: premium flex plus carbon steel
- Precise design and hardened to stay sharp. 1695.1 is used to restore existing pedal threads and is available in set (left and right).



CODE	ART.	DIMENSION
616080	1695.1	9/16 x 20 tpi

## RIGHT PEDAL THREAD INSERT 10 PIECES SET

- material: premium flex plus carbon steel
- Inner dimension: M14 x 1,25
- Outer dimension: M16 x 1
- Pedal thread inserts are used to replace damaged threads in cranks. They are used together with appropriate pedal taps and are available in 10 pcs sets.



CODE	ART.	DIMENSION
616082	1695.3	/10

## TAP HANDLE

- Tap handle is used with pedal taps - 1695.1AR, 1695.1AL, 1695.1 and 1695.2.
- Long handles enables precise and easy use.



BLUE		RED	
CODE	ART.	CODE	ART.
623190	1695/4BI	624963	1695/4BI-US

## LEFT AND RIGHT REAMER AND TAP

- material: premium flex plus carbon steel
- Precise design and hardened to stay sharp. 1695.2 is used for cutting new threads before inserting pedal thread inserts 1695.3 or 1695.4 and is available comes in set (left and right).



CODE	ART.	DIMENSION
616081	1695.2	16 x 1

## LEFT PEDAL THREAD INSERT 10 PIECES SET

- material: premium flex plus carbon steel
- Inner dimension: M14 x 1,25
- Outer dimension: M16 x 1
- Pedal thread inserts are used to replace damaged threads in cranks. They are used together with appropriate pedal taps and are available in 10 pcs sets.



CODE	ART.	DIMENSION
616083	1695.4	/10



## LEFT PEDAL REAMER AND TAP

- material: premium flex plus carbon steel
- Precise design and hardened to stay sharp. 1695.1AL is used for cutting new left threads before inserting left pedal thread inserts 1695.4A. Pedal tap 1695.1AL removes the old thread before making a new one, so no other tap is needed.



CODE	ART.	DIMENSION
616554	1695.1AL	5/8" x 24 tpi

## RIGHT PEDAL THREAD INSERT 10 PIECES SET

- material: premium flex plus carbon steel
- Inner dimension: 9/16 x 20 TPI
- Outer dimension: 5/8 x 24 TPI
- Pedal thread inserts are used to replace damaged threads in cranks. They are used together with appropriate pedal taps and are available in 10 pcs sets.



CODE	ART.	DIMENSION
616551	1695.3A	5/8 x 24

## CROWFOOT PEDAL WRENCH

- Crowfoot is compatible with 1/2" torque wrenches and used to verify if pedals are tightened to correct specification. When used with 1/2" ratchet or fixed handle it can be also used as regular pedal wrench. Laser cut from tool steel and heat-treated for strength and durability.



CODE	ART.	DIMENSION
629071	1613/2CF	15

## RIGHT PEDAL REAMER AND TAP

- material: premium flex plus carbon steel
- Precise design and hardened to stay sharp. 1695.1AR is used for cutting new right threads before inserting right pedal thread inserts 1695.3A. Pedal tap 1695.1AR removes the old thread before making a new one, so no other tap is needed.



CODE	ART.	DIMENSION
616553	1695.1AR	5/8" x 24 tpi

## LEFT PEDAL THREAD INSERT 10 PIECES SET

- material: premium flex plus carbon steel
- Inner dimension: 9/16 x 20 TPI
- Outer dimension: 5/8 x 24 TPI
- Pedal thread inserts are used to replace damaged threads in cranks. They are used together with appropriate pedal taps and are available in 10 pcs sets.



CODE	ART.	DIMENSION
616552	1695.4A	5/8L x 24



MADE  
FOR  
WORK.



J

CHAIN

## MASTER CHAIN TOOL

The most advanced chain tool in our range. Featuring machined body & precisely made spindle threads for smoothness and ease of use. Large handle gives extra leverage and breaks the chain easily. Master Chain Tool features floating chain support for perfect positioning and support of any chain. Works with all derailleur chains from 6–12-speed, is compatible with SRAM AXS chain and works with 1/8" single speed chains. It also supports Campagnolo's 11- and 12-speed chain peening. Tool comes with three different interchangeable chain supports; preinstalled is a single link support, available are also a wider double link chain support for extra grip on the chain and a dedicated SRAM AXS chain support. Hidden compartment at the in body of the tool features an additional replacement chain pin.

### COMES WITH:

- Long and short derailleur chain support (compatible with 6–12-speed derailleur chains)
- Dedicated SRAM AXS chain support
- Campagnolo chain pin blocker
- Replacement chain pin

### COMPATIBLE WITH:

- All derailleur chains from 6–12-speed
- SRAM AXS flat top chain
- Most single speed 1/8" chains
- Campagnolo 11- and 12-speed chain peening



BLUE		RED	
CODE	ART.	CODE	ART.
628515	1647/2BBI	628516	1647/2BBI-US

## MINI CHAIN TOOL +

Our Mini Chain Tool + is ideal chain tool to take it with you out on the bike. Never mind the riding style or the drive train you use, this chain tool can cover anything from 5 to 11 speed and perform like our professional shop tools. Despite the small design, there is more it can do - its handle doubles in function as a valve core remover for schrader and presta valves.



CODE	ART.
627100	1647/5MINI

## CHAIN TOOL

- Works on all chains from 5 to 11 speeds.
- The handle is plastic dipped and enables comfortable use.

### HOW TO USE THE TOOL:

The basic screw type chain tool is intended for home users. The simple tightening of the spindle fits the chain pin perfectly. The ergonomic design makes it precise and easy to use.



BLUE		RED	
CODE	ART.	CODE	ART.
623728	1647HOBBY/4P	624901	1647HOBBY/4P-US

## PRO CHAIN TOOL

- material: premium flex plus carbon steel
- ergonomic heavy duty double component handle
- also supports Campagnolo 11 speed

### HOW TO USE THE TOOL:

The Screw type chain tool is intended for both professionals and enthusiast users. The simple tightening of the spindle fits the chain pin with perfect precision and with its ergonomic design it is easy to use.



BLUE		RED	
CODE	ART.	CODE	ART.
621662	1647/2ABI	624900	1647/2ABI-US

## REPLACEMENT CHAIN PINS FOR 1647/2ABI AND 1647/2BBI

CODE	ART.
621734	1647.1/4A



## MASTER LINK PLIERS

- material: premium flex plus carbon steel
- surface finish: chrome plated to standard ISO 1456:2009
- Tool can be used by professional or amateur mechanics

Master link pliers are for commonly used chains with master link, SRAM Powerlink or the KMC Missing Link. After chain use and due to mud and rust, it can be impossible to remove the master link with only your hands. With Unior 1720/2DP Master Link pliers, removal of the master link is easy.



BLUE		RED	
CODE	ART.	CODE	ART.
623296	1720/2DP	624907	1720/2DP-US

## CHAIN RIVET PLIERS

- material: premium flex plus carbon steel
- drop forged, entirely hardened and tempered
- surface finish: chrome plated according to ISO 1456:2009
- pin induction hardened
- double plastic dipped handles

The chain rivet pliers have been developed to enable both professional and home mechanics to work quickly and safely on bicycle chains. Higher functionality and practicality are the advantages of the chain rivet pliers and with this unique design less physical effort is required to extract the rivet from the chain. Jobs will be performed quickly and comfortably without damage to the rivet or chain plate. The ergonomic design enables single handed use.



BLUE		RED		DIMENSION
CODE	ART.	CODE	ART.	
615377	1640/1DP	624914	1640/1DP-US	240

## PRO CHAIN WEAR INDICATOR

### HOW TO USE THE TOOL:

To alleviate poor shifting and uneven drive train wear, most manufacturers recommend chain replacement at or before 0,6% stretch. Now you can quickly and accurately determine the wear and stretch of any chain. Simply insert the chain checker's pins into two links, press the swing arm gauge tight, and then check the gauge window for an accurate reading.



CODE	ART.	DIMENSION
617170	1643/4	0 - 1,2

## CHAIN WEAR INDICATOR

- Made from precision, laser cut steel.

### HOW TO USE THE TOOL:

A worn chain shifts poorly and causes undue damage to the sprockets. The tool is a "go, no go" gauge designed to accurately indicate when a chain is worn out.

### IMPORTANT!

Measurement: from 0 to 0,6% - no chain wear. from 0,7 to 1,2% the chain is worn out and it is necessary to replace it.



CODE	ART.
617171	1644/4

## REPLACEABLE PIN FOR CHAIN RIVET PLIERS

- material: premium flex plus carbon steel
- surface finish: blacken to standard DIN 50938
- pin induction hardened

CODE	ART.
605956	1640.1/4





MADE  
FOR  
WORK.



**K**

CASSETTE & FREEWHEEL TOOLS

11x 12x

## CASSETTE WRENCH



- material: premium flex plus carbon steel
- surface finish: chrome plated according to ISO 1456:2009
- ergonomic heavy duty double component handle
- Two configurations: one for 10/11/12t small-cog cassettes, one for 13/14t small-cog cassettes
- Ridges on the outside of the pins provide a secure grip on the cassette.
- Access hole allows for a cassette locking tool to fit.

### HOW TO USE THE TOOL:

- Modern replacement of the traditional chain whip
- Pins on the tool engage with the smallest sprocket on the cassette and hold it in place, while the opening in the middle allows for easy access to the cassette locking.
- Version for 11- & 12-tooth sprockets has longer pins on the "12t" side. This makes it fully compatible with cassettes where two smallest sprockets have 10 and 12 teeth. For removal of the sprocket, where the smallest sprocket has 10t, the tool reaches over it and engages with the next 12t sprocket.

BLUE		RED		DIMENSION
CODE	ART.	CODE	ART.	
617235	1670/2BI	624931	1670/2BI-US	11/12
622881		624967		13/14

## CASSETTE WRENCH FOR SRAM X-RANGE



Modern replacement of the traditional chain whip. Pins on the tool engage with the smallest 10T sprocket on the cassette and hold it in place, while the opening in the middle allows for easy access to the cassette locking.

- material: premium flex plus carbon steel
- surface finish: chrome plated according to ISO 1456:2009
- ergonomic heavy duty double component handle
- Single sided, compatible only with Sram X-Range cassettes
- Ridges on the outside of the pins provide a secure grip on the cassette
- Access hole allows for a cassette locking tool to fit.

**NEW**

BLUE		RED	
CODE	ART.	CODE	ART.
629060	1670/2BI-AXS	629061	1670/2BI-AXS-US

## CHAIN WHIP, SINGLESPEED

Thanks to its ergonomic shape and long double dipped handle for leverage, this chain whip will disassemble 1/8" fixed gear sprockets and single speed cassette sprockets with ease and without slippage. Magnet at the end of the chain helps with securing the chain to the sprocket and makes storage easier. Tool body features a lockring wrench for fixed gear sprocket lockrings. Made from laser cut tool steel and heat treated for strength and lasting performance.

- material: premium flex plus carbon steel
- surface finish: chrome plated according to ISO 1456:2009
- Magnet holds chain in place and makes the storage easier



**NEW**

BLUE		RED	
CODE	ART.	CODE	ART.
628901	1659/2DP	628902	1659/2DP-US

## CHAIN WHIP, MULTISPEED

Thanks to its ergonomic shape and long double dipped handle for leverage, this chain whip will disassemble cassettes with ease and without slippage. Made from laser cut tool steel and heat treated for strength and lasting performance. The tool is designed to work with multi-speed cassettes from 6- to 12-speed, including SRAM X-range cassettes.

- material: premium flex plus carbon steel
- surface finish: chrome plated according to ISO 1456:2009
- double plastic dipped handles
- Magnet holds chain in place and makes the storage easier



**NEW**

BLUE		RED	
CODE	ART.	CODE	ART.
628903	1660/2DP	628904	1660/2DP-US





## UNIVERSAL FREEWHEEL REMOVER

Changing sprockets on threaded hubs can be a time consuming operation. The 1722/2BI is a unique tool for removal of different standard sprockets from a threaded hub.

### HOW TO USE THE TOOL:

With Unior's 1722/2BI you can firmly grab the complete sprocket from two sides, turn the spindle and fix firmly. The spindle and the side bushings on the tool create a strong grip. By turning the tool counter clockwise you can unscrew the sprocket.

BLUE		RED	
CODE	ART.	CODE	ART.
623473	1722/2BI	624937	1722/2BI-US

## SPROCKET WEAR INDICATOR

- material: premium flex plus carbon steel
- surface finish: chrome plated according to ISO 1456:2009
- for HG and IG sprockets

### HOW TO USE THE TOOL:

The sprocket wear indicator is used to determine the condition rear sprockets. It can be used to check 12 to 21 tooth sprockets. Procedure: The chain is put on the sprocket and the tool placed with its round end between two teeth on the upper sprocket side. The last chain link is moved away from the sprocket and a force of 100 N or 10 kg is applied to the tool in the direction of sprocket rotation. Now the last chain link is moved towards the sprocket. If it skips easily to the cog the sprocket is in a good condition and will function flawlessly even with a new chain. However, if the last chain link gets stuck on the tip of the neighbouring tooth or if we have to force it to skip on the cog, the sprocket is worn out and should be replaced. In case the chain falls off the cog when applying force, the sprocket is heavily worn out and a replacement is overdue.



BLUE		RED		DIMENSION
CODE	ART.	CODE	ART.	
619717	1658/2P	624954	1658/2P-US	HG - IG

## CASSETTE LOCKRING WRENCH WITH GUIDE

Wrench for rear sprocket with handle is used for Shimano®, SRAM®, Sun Race®, Suntour® and other cassette sprockets, like the key nr. 1670.7. Fixed handle enables easier use because no additional tools for gripping the key are necessary. The two-component grip sleeve on the handle fits the hand exactly and enables a perfect grip of the key.



BLUE		RED		DIMENSION
CODE	ART.	CODE	ART.	
617908	1670.8/2BI	624932	1670.8/2BI-US	350



## FREEWHEEL REMOVAL TOOL

For: Shimano®, SRAM® and Sachs Aris®, Sun Race®

### HOW TO USE THE TOOL:

Use the freewheel remover together with the Unior 1/2" ratchet 190.1ABI

CODE	ART.
616062	1670.1/4



## FREEWHEEL REMOVER SUNTOUR®

For: Suntour®

CODE	ART.
616063	1670.2/4



## FREEWHEEL REMOVER SUNTOUR®

For: Suntour®

CODE	ART.
616064	1670.3/4



## CAMPAGNOLO CASSETTE LOCKRING TOOL

The freewheel remover is used for removing an assembling Campagnolo® freewheels.

### HOW TO USE THE TOOL:

Use the freewheel remover together with the Unior 1/2" ratchet 190.1ABI

CODE	ART.
616707	1670.4/4



## CASSETTE LOCKRING TOOL

Shimano®, SRAM®, Sun Tour®, Chris King® and Sun Race® and others.

### HOW TO USE THE TOOL:

Use the freewheel remover together with the Unior 1/2" ratchet 190.1ABI

CODE	ART.
616065	1670.5/4



## FREEWHEEL REMOVER FOR BMX®

Freewheel BMX®

CODE	ART.
616066	1670.6/4



## FREEWHEEL REMOVER WITH GUIDE PIN

Cassette lockring tool with guide

CODE	ART.
616067	1670.7/4



## CASSETTE LOCKRING TOOL WITH 12MM GUIDE PIN

Tool is used to remove and install cassette on hubs with 12 mm through axle.

CODE	ART.
625615	1670.9/4





## 2 IN 1 POCKET SPOKE AND CASSETTE LOCKRING TOOL



- material: premium flex plus carbon steel
- surface finish: blacken to standard DIN 50938
- The wrench is the basic working tool for cyclists extended tours.

### HOW TO USE THE TOOL:

To change broken spokes on the right side of the rear wheel, the cassette has to be removed first. Firstly remove the rear wheel, than fit the tool onto the freewheel nut. Replace the rear wheel, so that the square edge of the tool presses to the frame or derailleur hanger. After that, push the pedals in the forward direction and loosen the freewheel nut. Remove the cassette and replace the broken spoke. In order to prevent the possibility that the paint on the bicycle frame is damaged, a protective plastic plate should be inserted between the key and the frame.

CODE	ART.
616758	1669/4

## PRO SOCKET HANDLE



- material: premium flex chrome vanadium steel
- body drop forged
- entirely hardened and tempered
- surface finish: chrome plated to standard ISO 1456:2009
- ergonomic heavy duty double component handle

Pro Socket Handle is not just another tool from our general tool program. It has been developed purposefully for our bike program. It is light, compact, extremely durable and features double component ergonomic handle. Designed to work with our cassette lock ring tools, flat sockets for suspension service and many more.

BLUE		RED	
CODE	ART.	CODE	ART.
627084	190.8/2BI	627085	190.8/2BI-US

MADE  
FOR  
WORK.



BRAKE TOOLS



## DISC BRAKE PISTON SPREADER

The conically shaped tip of the tool is designed to slide between the pads inside the caliper and spread the pads by pushing pistons back into the caliper. Tool is bend under 30° for easier access to the caliper and features a double dipped ergonomic handle for comfort.

- Made from laser cut tool steel
- Heat-treated for strength and lasting performance
- Double dipped ergonomic handle for comfort



BLUE		RED	
CODE	ART.	CODE	ART.
626336	1750/2DP	626335	1750/2DP-US

## ROTOR TRUING FORK

- material: premium flex plus carbon steel
- surface finish: chrome plated according to ISO 1456:2009
- The tool is designed to repair minor damage on brake rotors. It features two different sloth depths to choose from.



BLUE		RED		DIMENSION
CODE	ART.	CODE	ART.	
619716	1666/2DP	624905	1666/2DP-US	2,2

## 2-FOR-1 DISC BRAKE TOOL

- material: premium flex plus carbon steel
- surface finish: chrome plated according to ISO 1456:2009

Unique design of this tool combines two tools in one – standard disc brake pad spreader and rotor truing fork. The slot allows you to true the rotor back in place and save you thumbs from getting cut on the sharp edges of the rotor. The conically shaped tip of the tool is designed to slide between the pads inside the caliper and spread the pads, pushing pistons back in to the caliper. 2-for-1 Disc Brake Tool is the tool to have at hand in any home garage, when out riding or traveling. Warning: Always make sure disc calipers and disc rotor have cooled down before you start working on them.



BLUE		RED	
CODE	ART.	CODE	ART.
627086	1757/2DP	627087	1757/2DP-US

## BOTTOM BRACKET WRENCH 16 NOTCH

- material: premium flex plus carbon steel
- surface finish: chrome plated according to ISO 1456:2009
- ergonomic heavy duty double component handle

### HOW TO USE THE TOOL:

The wrench is used to remove and install Shimano® Hollowtech II, Campagnolo® Ultra-Torque and Power Torque, Race Face®, FSA®, SRAM®, Truvativ®, Chris King® bottom brackets as well as many and others. Small wrench is included for removal and installation of Shimano plastic bolts that are used on the Hollowtech II cranksets. The 1609/2BI wrench also fits on the external centerlock disc nut.



BLUE		RED	
CODE	ART.	CODE	ART.
615536	1609/2BI	624903	1609/2BI-US



## OFFSET OPEN RING WRENCH

- material: premium chrome vanadium steel
- drop forged, entirely hardened and tempered
- surface finish: chrome plated according to ISO 1456:2009
- profile up to dimension 12x14 is 6 point, from 17x19 to 30x32 is 12 point

### USAGE:

- In industry and repair shops specializing in hydraulic and pneumatic installations
- This wrench helps working on joints where the use of standard ring wrench is impossible due to the nature of the job (ex. unions on steel cables, hydraulic and water pipes and on valves etc).



CODE	ART.	DIMENSION
612701	183/2	8 x 10

## CABLE PULLER PLIERS WITH LOCK

- material: premium plus carbon steel
- surface finish: chrome plated according to ISO 1456:2009
- double plastic dipped handles

### HOW TO USE THE TOOL:

The basic function of the inner wire pliers is to tension brake and derailleur steel cables. It is used for holding the inner cable and pulling it out of the housing. The safety lock is activated with a thumb push. The pliers can now be released and the cable fixed. The lock is automatically released by squeezing handles together. The additional safety lock enables easier, faster and more comfortable use.



BLUE		RED	
CODE	ART.	CODE	ART.
619719	1642.1/2P	624917	1642.1/2P-US



**MADE  
FOR  
WORK.**





**M**

**FRAME & FORK TOOLS**

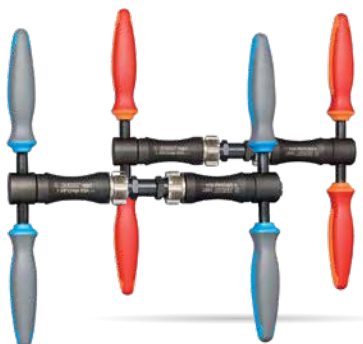


## BOTTOM BRACKET TAPPING TOOL BSA

- Ideal tool for fixing bottom bracket threads on the frame or removes excess paint or dirt from threads
- Magnetic handle eases assembly of the tool
- ergonomic heavy duty double component handle
- BSA standard - left & right thread tap 1.3/8 x 24 TPI

### THE SET CONTAINS:

- Reamer's magnetic handle 1695.1/4BI or 1695.1/4BIUS
- Reamer holder for 1697.2/4
- Left & right tap BSA 1.3/8 x 24 TPI



BLUE		RED		DIMENSION
CODE	ART.	CODE	ART.	
626474	1697	626475	1697-US	1.3/8 x 24 TPI

## ADAPTOR FOR TAP BSA

Adaptor is compatible with taps BSA 1697.1 and magnetic handle 1695/4BI for reamers and taps. Slot on the top of the adaptor enables quick and easy assembly of the tool together with the handle for reamers and taps 1695/4BI.

CODE	ART.
626467	1697.2/4



## SET OF ADAPTORS AND TAPS BSA

Set is compatible with magnetic handle 1695/4BI for reamers and taps.

### THE SET CONTAINS:

- 2 adaptors for taps BSA
- Left & right tap BSA 1.3/8 x 24 TPI



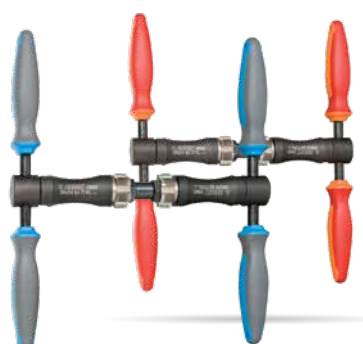
CODE	ART.
626487	1697.3

## BOTTOM BRACKET TAPPING TOOL ITAL

- Ideal tool for fixing bottom bracket threads on the frame or removes excess paint or dirt from threads
- Magnetic handle eases assembly of the tool
- ergonomic heavy duty double component handle
- ITA standard - two thread taps M36 x 24 TPI

### THE SET CONTAINS:

- Reamer's magnetic handle 1695.1/4BI or 1695.1/4BIUS
- Reamer holder for 1698.2/4
- Two ITAL thread taps M36 x 24 TPI



BLUE		RED		DIMENSION
CODE	ART.	CODE	ART.	
626472	1698	626473	1698-US	36x24tpi (ITAL)

## TAPS BSA

- material: premium plus carbon steel
- Left and right taps available in set for article 1697.
- Set of taps L & R BSA 1.3/8 x 24 TPI

CODE	ART.	DIMENSION
617310	1697.1	1.3/8x24tpi (BSA)



## SET OF ADAPTORS AND TAPS ITAL

Set is compatible with magnetic handle 1695/4BI for reamers and taps.

### THE SET CONTAINS:

- 2 adaptors for taps ITAL
- 2 taps ITAL 36 x 24 TPI



CODE	ART.	DIMENSION
626486	1698.3	36 x 24 TPI

## TAPS ITAL

- material: premium plus carbon steel
- Left and right taps available in set for product no. 1698.
- Set of 2 taps ITAL 36 x 24 TPI



CODE	ART.	DIMENSION
617590	1698.1	36x24tpi (ITAL)

## BOTTOM BRACKET REAMER TOOL FRAME BSA & ITA

Tool frame is compatible with bottom bracket reamer 1699.1 and magnetic handle for reamers and taps 1695/4BI. Slot on the top of the adaptor enables quick and easy assembly of the tool together with the handle for reamers and taps 1694/4BI.



CODE	ART.
626468	1699.2/4

## BOTTOM BRACKET REAMER

- material: premium plus carbon steel
- compatible with BSA & ITAL standard



CODE	ART.	DIMENSION
617592	1699.1	44mm

## ADAPTOR FOR TAP ITAL

Adaptor is compatible with taps ITAL 1698.1 and magnetic handle 1695/4BI for reamers and taps. Slot on the top of the adaptor enables quick and easy assembly of the tool together with the handle for reamers and taps 1694/4BI.



CODE	ART.
626466	1698.2/4

## BOTTOM BRACKET FACING TOOL BSA & ITA

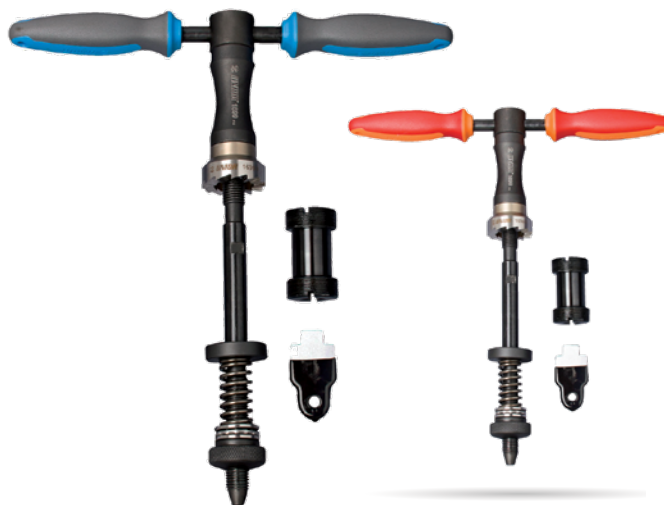
- Easy to use
- Tool is used to restore or prepare the surface of bottom bracket shell
- Magnetic handle eases assembly of the tool
- ergonomic heavy duty double component handle
- Precision manufactured tool
- Reamer frame guide BSA 1699.4BSA with tool 1699.5/4P

### THE SET CONTAINS:

- Reamer's magnetic handle 1695.1/4BI or 1695.1/4BIUS
- Reamer body 1699.2/4
- Reamer 1699.1
- Reamer frame guide BSA 1699.4BSA with tool 1699.5/4P

### OPTION

- Reamer frame guide ITA 1699.4ITA



BLUE		RED		DIMENSION
CODE	ART.	CODE	ART.	
626476	1699	626477	1699-US	1.37 x 24tpi, 36 x 24tpi

## GUIDE FOR TAPS 1697.1 AND 1698.1

Guide threads into adaptor to hold taps in place and centers the tool during usage. Guide is compatible with both 1697.1 and 1698.1 taps and 1697.2/4 and 1698.2/4 adaptors. It consists of male and female part with a precise fit.



CODE	ART.
627325	1697.4

## HEAD TUBE FACING TOOL

Frame preparation is the key to the perfect alignment and ultimate performance of your headset. Get the perfect fit of the headset with the edging of the head tube. With this tool, you can also remove the excess of the paint or repair the damaged head tube.

### THE SET CONTAINS:

- Reamer's magnetic handle 1695.1/4BI or 1695.1/4BIUS
- Reamer frame for head tube 1694.2/4
- Cone guide
- Head tube reamer for 1694 – 1.1/8
- compression spring and nut



BLUE		RED		DIMENSION
CODE	ART.	CODE	ART.	
626479	1694	626480	1694-US	1.1/8"

## BOTTOM BRACKET FACING TOOL GUIDE ITAL

- Guide ensures precise centering of the bottom bracket reamer.
- Threads into the frame with the wrench for guide 1699.5/4P.



CODE	ART.
626469	1699.4ITA

## WRENCH FOR BOTTOM BRACKET FACING TOOL GUIDE BSA & ITA

Wrench is used to thread bottom bracket facing tool into the frame and is compatible with BSA & ITAL guides. The handle of the wrench is plastic dipped for comfort.

CODE	ART.
626471	1699.5/4P



## HEAD TUBE FACING TOOL FRAME

Reamer frame is compatible with reamer 1694.1 and magnetic handle for reamers and taps 1695/4BI. Slot on the top of the adaptor enables quick and easy assembly of the tool together with the handle for reamers and taps 1694/4BI.



CODE	ART.
626463	1694.2/4

## HEAD TUBE REAMER

- material: premium plus carbon steel
- reamer for head tube with diameter 1.1/8"

CODE	ART.	DIMENSION
617824	1694.1	1.1/8"





## HANDLE FOR REAMERS & TAPS

- Handle is ergonomically shaped and made of heavy duty two component material. Its specialty is the magnetic tooth, which enables quick and easy assembly of the tool and at the same time allows you to use a single handle on several different tools.

### HANDLE IS COMPATIBLE WITH:

- Bottom bracket tapping tool BSA 1697
- Bottom bracket tapping tool ITAL 1698
- Bottom bracket facing tool BSA & ITAL 1699
- Head tube facing tool 1694
- Set of adaptors and taps BSA 1697.3
- Adaptor for tap BSA 1697.2/4
- Set of adaptors and taps ITAL 1698.3
- Adaptor for tap ITAL 1698.2/4
- Bottom bracket reamer tool frame BSA & ITA 1699.2/4
- Head tube facing tool frame 1694.2/4



BLUE		RED	
CODE	ART.	CODE	ART.
626464	1695.1/4BI	626465	1695.1/4BI-US

## HEADSET PRESS

- material: premium flex plus carbon steel
- This tool accurately presses headset cups 1", 1-1/8", 1-1/4" and 1-1/2" into head tubes. In addition it has a longer spindle for BMX headsets with larger tubing. This precision made tool enables work without damage.



CODE	ART.	DIMENSION
616290	1680/4	1" x 1.1/8" x 1.1/4" x 1.1/2"

## HEAD SET CUP REMOVER

- material: premium flex plus carbon steel
- surface finish: blacken to standard DIN 50938
- The head set cup remover makes removal of cups 1", 1-1/8" and 1-1/4" from the frame easy



CODE	ART.	DIMENSION
616291	1681/4	1" x 1.1/8" x 1.1/4"

## HEAD SET CUP REMOVER

- material: premium flex plus carbon steel
- surface finish: blacken to standard DIN 50938
- The head set cup remover makes removal of cups 1-1/4" and 1-1/2" from the frame quick and easy
- Suitable to remove PressFit 30 (PF30) bottom bracket cups. PF30 bottom bracket cups are pressed in to the frame the same way as the head tube cups and have the same internal diameter.



CODE	ART.	DIMENSION
619705	1681.1/4	1.1/4" x 1.1/2"

## CROWN RACE SETTER

The tool is used for installation of the crown race to a steerer tube of the fork. Tool consists of the tool body and interchangeable adapters in dimensions 1", 1.1/4", 1.1/8" & 1.1/2", which are to be used accordingly to the steerer tube's seat dimension. Adapters are designed to make crown race installation safe and not to damage the components. The tool is compatible with steerer tubes with length up to 380 mm. The tool is used in the combination with the hammer; we recommend Unior's Dead Blow Hammer 819A.

- material: premium plus carbon steel
- surface finish of tube: zinc plated according to ISO 2081 Fe/Zn8/B, inserts blacken to standard DIN 50938
- Dimension: 1", 1.1/4", 1.1/8", 1.1/2"
- Compatible with steerer tubes with maximum length of 380 mm
- Lifetime warranty
- Made in Europe.

**NEW**

CODE	ART.
626268	1683/5A



## CROWN RACE PULLER

The puller is a tool for quickly and precisely removing the headset crown race from 1", 1-1/8", 1-1/2" or 1-1/4" suspension or rigid front fork. To use, place the puller bush onto the front fork race and fix it by turning the nut. Turn the spindle attached to the steering column to pull the crown race from the fork. The product enables efficient race removal without the use of a hammer. It is intended for both professionals and enthusiasts.

- material: premium flex plus carbon steel
- surface finish: blacken to standard DIN 50938
- safe to use on aluminum, steel, titanium or carbon steerer tubes
- Compatible with steerer tubes with maximum length of 380 mm
- Collet for every steerer tube size from 1" - 1.1/2"
- The entire system is packed in a custom cutout SOS foam tray, keeping things organized and clean
- Lifetime warranty
- Made in Europe.



**NEW**

BLUE		RED		DIMENSION
CODE	ART.	CODE	ART.	
626269	1614/4BI	626270	1614/4BI-US	1"-1.1/2"

## OFFSET SINGLE SIDED CONE WRENCH

- material: premium flex plus carbon steel
- surface finish: chrome plated according to ISO 1456:2009
- double plastic dipped handles

The design of the offset cone wrench enables working in difficult hard to reach places. This unique design is suitable for assembly and disassembly of nuts on Sun Tour headsets. It is intended to be used together with the single sided cone wrench, product no. 1617/2DP. The new design enables higher torque with reduced force.



BLUE		RED		DIMENSION
CODE	ART.	CODE	ART.	
615372	1618/2DP	624939	1618/2DP-US	36

## BALL RACE REMOVER

- material: premium flex plus carbon steel
- surface finish: blacken to standard DIN 50938

### HOW TO USE THE TOOL:

This tool is used for removal of headsets of older bike models. To remove the ball bearing cups, tap on the tool with hammer.



CODE	ART.	DIMENSION
615527	1616/4	1", 1.1/8", 1.1/4"

## STAR NUT SETTER

- material: premium plus carbon steel
- surface finish: blacken to standard DIN 50938
- The threadless nut setter is used to install the star fangled nut found on 1" and 1-1/8" threadless headset systems. It is intended for both professionals and home users.



CODE	ART.	DIMENSION
616292	1682/4	1" - 1.1/8"

## STAR NUT GUIDE

- material: premium flex plus carbon steel
- surface finish: phosphated to standard ISO 9717

The guide is designed for guiding the threadless nut setter when installing star nuts found on 1" and 1-1/8" threadless headset systems. It is intended for both professionals and enthusiasts.



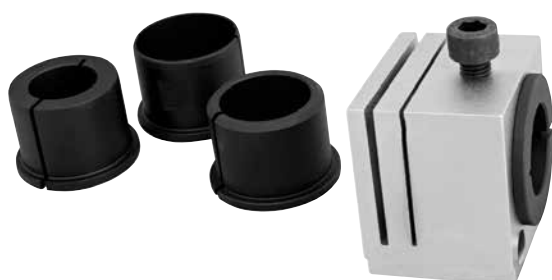
CODE	ART.	DIMENSION
619618	1682.1/4	1", 1.1/8"

## STEERER TUBE CUTTING GUIDE

- material: premium flex plus carbon steel
- for dimensions: 1", 1-1/4", 1-1/8", 1-1/2"
- The 1604/2PLUS enables mounting of the measuring gauge item 1604.1/2PLUS, which enables fast and precise determination of steering tube length desired after the cut.

### HOW TO USE THE TOOL:

When the steering tube on a new fork is longer than necessary, it needs to be shortened to the correct length. The cutting guide enables an even and precise cut of the steerer tube with dimensions 1", 1-1/4", 1-1/8", 1-1/2". Clamp the fork into the cutting rail, the cut must be positioned exactly on the opening of the guide itself. Lightly tighten the screw. Install the cutting guide along with the fixed fork to the vice on the work bench. Saw the steering tube by means of a saw (product no. 750) through the opening in the guide. The compact and precision housing, made in a compact does not leave scratches on the steering tube.



CODE	ART.	DIMENSION
623417	1604/2PLUS	1" x 1.1/8" x 1.1/4" x 1.1/2"

## TUBE CUTTER

Designed to be an easy to use and effective way of cutting tubes. Simply place the cutter and engage the cutting wheel at your desired position, rotate tool around the tube while adjusting the cutting wheel using the ergonomic knob.

- instant wheel change
- ergonomic knob
- 4 rollers for a better fastening of the tube and smooth operation
- spare cutting wheel in handle
- possible individual use of burr NOGA removal tool
- steel threaded insert for longer life span

### USAGE:

- for cutting cooper, aluminium, inox and steel tube of maximum thickness till 2mm

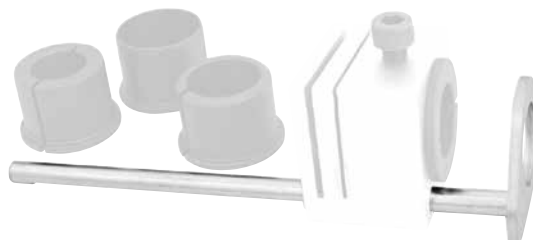
**NEW**



CODE	ART.	DIMENSION
626187	360/6A	3-35

## GAUGE FOR STEERER TUBE CUTTING GUIDE

Measuring gauge item 1604.1/2PLUS fits onto the steerer cutting guide 1604/2PLUS and enables fast and precise determination of steering tube length desired after the cut.



CODE	ART.
623418	1604.1/2PLUS

## INTERNAL - EXTERNAL REAMER

- Create a professional and burr free finish on cut tubes. After cutting, simply place the reamer over the tube end and twist until burrs are removed.
- removes burrs on interior and exterior tube edges
- plastic housing with ribbed surface for grip
- cutting blades from special tool steel, oil hardened

**NEW**



CODE	ART.	DIMENSION
626249	363A	3-42

## DROPOUT ALIGNMENT GAUGES

- material: premium flex plus carbon steel
- surface finish: blacken to standard DIN 50938

### HOW TO USE THE TOOL:

To use, remove the wheel and insert the tool into the frame. This tool is used for the alignment of the rear triangle and dropouts.



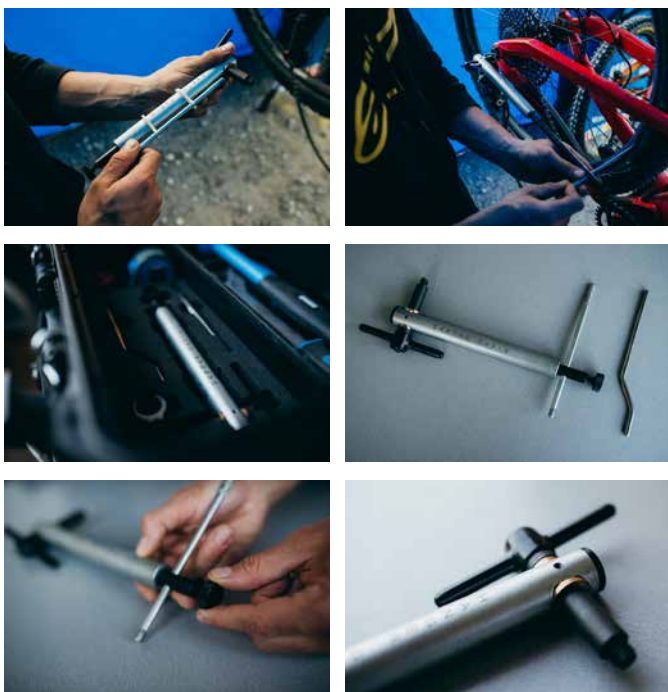
CODE	ART.
618412	1692/4



## HANGER GENIE - HANGER ALIGNMENT TOOL

Hanger Genie is foldable and precise tool, used for re-aligning rear derailleur hangers and maintaining precise gear shifting. It's compatible with all wheel sizes from 20" to 29"+ and screws directly into rear derailleur hanger threads. Precise measuring gauge can be locked in place, so you don't lose your measurement when you push it against the wheel in different positions. Thanks to rotating bottom part of the tool, you can easily clear the frame when you work your way around the wheel.

CODE	ART.
628355	1602/5



## FRAME TAPS

- material: premium plus carbon steel
- Its function is to restore rusted or restore damaged threads. Available in three different thread sizes.
- The finish prevents external damage.

M10 - frame tap for derailleur hanger (616079) M5 - frame tap for water bottle, fender, rack bosses (616078) M3 - frame tap for rear wheel dropout alignment screws (616077)



CODE	ART.	DIMENSION
616077	1695	3
616078	1695	5
616079	1695	10 x 1

MADE  
FOR  
WORK.



**WINDOR**  
1721

N

BEARING TOOLS

## UNIVERSAL BEARING PRESS

- Unior's 1721 universal bearing press set enables installation of bearings on most of the frames and components.
- Set includes spindle with two threaded handles, adaptors for following standard bearings: 608, 1526, 6000, 6001, 6802, 6803, 6804, 6805, 6900, 6901, 6902, 6903, R6, 28x17 (Hope), BB30, all Press-fit standards and two different sized plastic coated adaptors, to protect carbon surfaces during bearing installation.
- One of the threaded handles includes a quick release system for quick and easy use.
- All items are organized in a compact two layer SOS foam storage box.

CODE	ART.
623301	1721



## INNER BEARING PULLER

- material: premium chrome vanadium steel
- drop forged, entirely hardened and tempered
- surface finish: chrome plated according to ISO 1456:2009
- ergonomic heavy duty double component handle

### ADVANTAGES:

Set includes 6 pcs of arm for inner bearing dimensions 6.5-8,10-12, 12-15, 17-20, 22-28, 30-36

### USAGE:

- It is used for pulling different types of bearings. The bearing is gripped from the inside side and pulled out.
- the bearing is extract with a 1 kg weight



BLUE		RED	
CODE	ART.	CODE	ART.
622587	689/2BI	626629	689/2BI-US



MADE  
FOR  
WORK.



SUSPENSION TOOLS



# SUSPENSION SERVICE SET

Suspension service set includes the most common tools for servicing suspension forks and shocks, all nicely arranged in a SOS tool tray and stored in a compact box.

## THE SET CONTAINS:

- Bushing extractor set sizes 12 mm and 12.7 mm
- Fork seal driver tool for fork sliders sizes 30, 32, 34, 35, 36, 37, 38 and 40 mm
- Hex wrenches sizes 3/64", 1/16", 1.5, 2, 2.5 and 3
- 1/2" sockets sizes 10, 15, 26, 27, 28, 30 and 32
- 1/2" reversible ratchet
- 1/4" socket size 5
- 1/4" swivel handle
- Suspension wrench with strap
- Waterpump box joint pliers
- Awl with round, double bent blade



**NEW**

BLUE		RED	
CODE	ART.	CODE	ART.
625953	1704	628959	1704-US

# FORK SEAL DRIVER TOOL

- Fork seal driver tool is specially designed for dust seal installation on the suspension forks. The drivers are designed to use the forks bushing as a guide, eliminating crooked seal installation, and ensuring perfect fit of the seal. The tool is made from reinforced plastic and does not damage the seal or the fork housing during the installation. Available in different sizes, each of them corresponding to specific stanchion diameter, and is compatible with both flangeless and flanged seals, making them compatible with most modern forks.
- Better compatibility is the biggest virtue of the newest version of this tool, but it also has laser engraved logos & spec, which will stay clearly visible for extended period of time.



**NEW**

CODE	ART.	DIMENSION
627753	1702	30
627754		32
627755		34
627756		35
627757		36
629034		37
629035		38
627758		40

## FORK SEAL DRIVER TOOL SET

- Set features dust seal drivers in size 30, 32, 34, 35, 36, 37, 38 and 40.
- Fork seal driver tool is specially designed for dust seal installation on the suspension forks. The drivers are designed to use the forks bushing as a guide, eliminating crooked seal installation, and ensuring perfect fit of the seal. The tool is made from reinforced plastic and does not damage the seal or the fork housing during the installation. Available in different sizes, each of them corresponding to specific stanchion diameter, and is compatible with both flangeless and flanged seals, making them compatible with most modern forks.
- Better compatibility is the biggest virtue of the newest version of this tool, but it also has laser engraved logos & spec, which will stay clearly visible for extended period of time.

**NEW**



CODE	ART.
629075	1702-SET



## FLAT WRENCH FOR SUSPENSION SERVICE

Wrench is used to remove and install IFP reservoir on RockShox Super Deluxe shocks and RockShox Vivid Air shocks. It features double dipped handle for comfort, with the right leverage to prevent overtightening of the reservoir. Crowfoot allows the use of 1/2" torque wrench for more precise work. Made from laser cut tool steel and heat-treated for strength and lasting performance.



**NEW**

BLUE		RED	
CODE	ART.	CODE	ART.
629072	1706/2DP	629073	1706/2DP-US

## SUSPENSION TOP CAP SOCKET

- material: premium flex chrome vanadium steel
- drop forged, entirely hardened and tempered
- surface finish: chrome plated according to ISO 1456:2009
- polished

### USAGE:

Flat sockets are used on a bicycle suspension fork where the top nut has a very low profile.



CODE	ART.	DIM
625716		23
624214		24
624217		28
624218	1783/1 6P	30
624215		26
624219		32
624216		27

## SUSPENSION WRENCH WITH STRAP

- material: premium chrome vanadium steel
- drop forged, entirely hardened and tempered
- surface finish: chrome plated according to ISO 1456:2009
- Tool has a double plastic dipped handle for great comfort.

### USAGE:

Tool is used for servicing bicycle suspension. With its smooth rubberized strap you can grab any kind of smooth and sensitive surface, like shock or fork sliders.



BLUE		RED	
CODE	ART.	CODE	ART.
624367	1705/2DP	625105	1705/2DP-US

## EXTERNAL LOCK RINGS PLIERS, STRAIGHT

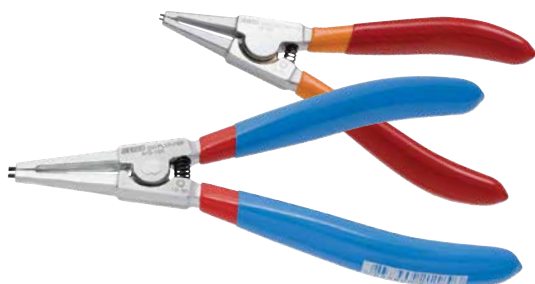
- material: premium plus carbon steel
- drop forged, entirely hardened and tempered
- head polished
- surface finish: chrome plated according to ISO 1456:2009
- tips black finish
- double plastic dipped handles
- made according to standard DIN 5254 form A

### ADVANTAGES:

- 30% higher endurance in comparison to convenient lock rings pliers
- with inserted tips
- for diameter 3 to 100mm

### USAGE:

- for fitting circlips on shafts



BLUE		RED		DIMENSION
CODE	ART.	CODE	ART.	
621187	532PLUS/1DP	625125	532PLUS/1DP-US	140 x 3 - 10

## SHOCK BUSHING EXTRACTOR SET

- Tool is used for removing old bushings from the rear shock.
- With use of this tool and a vice, removal of the bushing is incredibly easy.
- Tool supports bushings removal with diameter 12 mm and diameter 12,7 mm.



CODE	ART.	DIMENSION
623006	1701/5	12 - 12,7

## EXTERNAL LOCK RINGS PLIERS, BENT

- material: premium plus carbon steel
- drop forged, entirely hardened and tempered
- head polished
- surface finish: chrome plated to standard ISO 1456:2009
- tips black finish
- made according to standard DIN 5254 form B
- double plastic dipped handles

### ADVANTAGES:

- 30% higher endurance in comparison to convenient lock rings pliers
- with inserted tips
- for diameter 3 to 100mm

### USAGE:

- for fitting circlips on shafts



BLUE		RED		DIMENSION
CODE	ART.	CODE	ART.	
621195	534PLUS/1DP	625126	534PLUS/1DP-US	140 x 3 - 10



## INTERNAL LOCK RINGS PLIERS, STRAIGHT

- material: premium plus carbon steel
- drop forged, entirely hardened and tempered
- head polished
- surface finish: chrome plated according to ISO 1456:2009
- tips black finish
- double plastic dipped handles
- made according to standard DIN 5256 form C

### ADVANTAGES:

- 30% higher endurance in comparison to convenient lock rings pliers
- with inserted tips
- for diameter 8 to 100mm

### USAGE:

- for fitting circlips on bore holes



BLUE		RED		DIMENSION
CODE	ART.	CODE	ART.	
621203	536PLUS/1DP	625127	536PLUS/1DP-US	140 x 8 - 13

## INTERNAL LOCK RINGS PLIERS, BENT

- material: premium plus carbon steel
- drop forged, entirely hardened and tempered
- head polished
- surface finish: chrome plated to standard ISO 1456:2009
- tips black finish
- double plastic dipped handles
- made according to standard DIN 5256 form D

### ADVANTAGES:

- 30% higher endurance in comparison to convenient lock rings pliers
- for diameter 8 to 100mm
- with inserted tips

### USAGE:

- for fitting circlips on bore holes



BLUE		RED		DIMENSION
CODE	ART.	CODE	ART.	
621211	538PLUS/1DP	625128	538PLUS/1DP-US	140 x 8 - 13

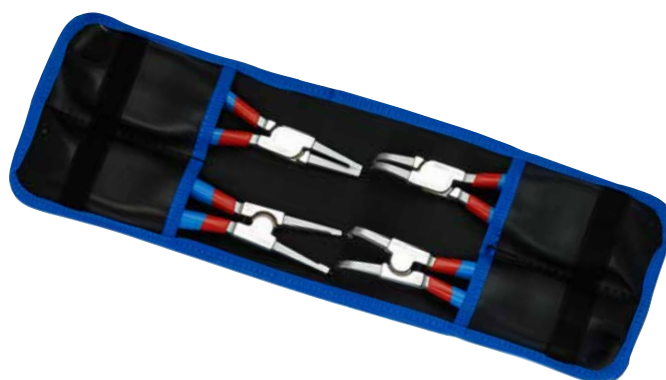
## SET OF LOCK RINGS PLIERS PLUS IN BAG

### SET INCLUDES:

- 2x external lock rings pliers, straight and bent, dim. 140 (3 - 10mm)
- 2x internal lock rings pliers, straight and bent, dim. 140 (8 - 13mm)



CODE	ART.	DIMENSION
621623	539PLUS/1DPCT	140 x 8 - 13



## AWL WITH ROUND, DOUBLE BENT BLADE

CODE	ART.	DIMENSION
617775	639C	165



## AWL SET

CODE	ART.	DIMENSION
617777	639PB	/4 x 165



## AWL WITH ROUND STRAIGHT BLADE

CODE	ART.	DIMENSION
617773	639A	165



## AWL WITH ROUND, 90° BENT BLADE

CODE	ART.	DIMENSION
617774	639B	165



## AWL WITH ROUND, DOUBLE BENT SMALL BLADE

CODE	ART.	DIMENSION
617776	639D	165





**P**

**WHEEL TOOLS**



# MASTER WHEEL BUILDING KIT

Unior's 1754 is a universal complete kit for building and truing wheels. All tools are organized in a compact two layer SOS foam storage box.

## KIT INCLUDES THE FOLLOWING TOOLS:

- 3.3, 3.45, 4, 4.3, 5, 5.5 mm spoke wrenches
- Shimano spoke wrench
- Flat spoke wrench
- Nipple driver and nipple assembly tool
- All Mavic spoke wrenches
- DT Swiss torx profile nipple wrench
- Inverted square nipple driver
- Spoke, bearing and cotter gauge



CODE	ART.
623441	1754

## NIPPLE INSERTION TOOL

- The Unior nipple assembly tool is your best friend when building wheels. It's firm spring enables you, to simply attached the nipple and screw it through a double wall rim on the spoke. This way, you avoid losing nipples between the walls of the rim.
- The spring is interchangeable, item 1751.1/7T



CODE	ART.
623299	1751/2T

## SPRING FOR NIPPLE INSTALLATION TOOL, 5 PCS SET



CODE	ART.
623300	1751.1/7T

## SPEED NIPPLE BIT

- Works with conventional nipples
- Threading nipples to the spokes is the most time consuming part of building wheels. Thanks to the speed nipple bit you can now do it with the cordless screwdriver, save yourself some time and still have all the nipples threaded on the spokes to the same depth.
- A protruding part in the center of the speed nipple bit keeps the nipple centered and prevents the tool from slipping off it. Eventually, as the nipple is fully threaded down the spoke, the protruding part of the tool touches the approaching spoke and unseats the driver. This enables that all the nipples are threaded down the spokes to the same depth, which leaves you with the perfect starting point to build great wheels.



CODE	ART.	DIMENSION
626981	1756	1,5
626982		2,5

## NIPPLE DRIVER

A must have wheel building tool. Rotating handle and the guide shape enables you to quickly screw the nipple onto the spoke. It supports standard shape nipples.



CODE	ART.
623297	1751/2

## INVERTED SQUARE NIPPLE DRIVER

Unior 1751/2Q is used for both normal and inverted nipples with 3.2 mm square head. The 90mm long stem enables work with deep aero rims as well as with all the normal rims. The professional metal handle gives perfect grip.



CODE	ART.	DIMENSION
623298	1751/2Q	3,35 x 3,35

## DT SWISS PRO SPOKE WRENCH

Unior's 1630/4DTPR is used for DT Swiss torx profile nipples. The ergonomic design makes work easy and efficient.



CODE	ART.	DIM
623448	1630/4DTPR	TX 20

## SPOKE WRENCH

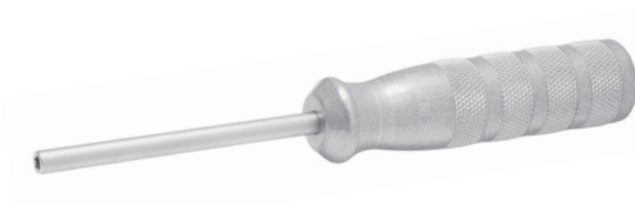
Spoke wrenches are designed to tighten nipples with flat diameter 3.3 mm to 3.45 mm. The form of wrench enables a perfect fit to the nipples without slippage and ensures efficient work.



CODE	ART.	DIMENSION
616759	1630/2A	3.3
616845		3.45

## DT SWISS® SQUORX NIPPLE TOOL

1751/2DT screwdriver is used for DT Swiss® SQUORX nipples with torx shaped top head. The 80mm long stem enables work with deep aero rims as well as with all the normal rims. The professional metal handle gives perfect grip.



CODE	ART.	DIMENSION
625552	1751/2DT	E 5

## PRO SPOKE WRENCH

- material: premium flex plus carbon steel
- handle plastic dipped
- The spoke wrench is designed to tighten nipples with flat diameters of 3,3 and 3,45 mm.
- The ergonomic design makes work easy and efficient. The 3.3 mm wrench has blue plastic coating while the 3.45 mm wrench has grey plastic coating.



BLUE		RED		DIMENSION
CODE	ART.	CODE	ART.	
615532	1630/2P	624930	1630/2P-US	3.3
615533		615533	1630/2P	3.45

## ROUND SPOKE WRENCH

- material: premium plus carbon steel
- drop forged, entirely hardened and tempered
- This wrench fits the popular spoke nipple flat sizes: 3.3 mm, 3.45 mm, 3.7 mm, 3.96 mm, 4.4 mm and 5mm. The shape adjusts perfectly to the hand and allows a comfortable work and easy grip.



CODE	ART.	DIMENSION
616289	1631/2	3.3, 3.45, 3.7, 3.96, 4.4, 5



## DOUBLE SIDED SPOKE WRENCH

- material: premium plus carbon steel
- surface finish: chrome plated according to ISO 1456:2009
- the key body is plastic-coated
- Spoke wrench is used for nipples with dimensions 4,0 and 4,4 mm + 3,3 and 3,45 mm . Plastic-coated body enables comfortable tightening and unscrewing of the nipples.



BLUE		RED		DIMENSION
CODE	ART.	CODE	ART.	
620179	1633/2P	624949	1633/2P-US	4 x 4,4
622789		624950		3,3 x 3,45

## DOUBLE SIDED SPOKE WRENCH

- material: premium flex plus carbon steel
- surface finish: chrome plated according to ISO 1456:2009
- the key body is plastic-coated
- This wrench is used for nipples with 5 mm and 5.5 mm dimensions. Plastic-coated body enables comfortable tightening and unscrewing of nipples.



BLUE		RED		DIMENSION
CODE	ART.	CODE	ART.	
619718	1636/2P	624953	1636/2P-US	5 x 5,5
628354		628369		5,5 x 6

## MAVIC SPOKE WRENCH

- material: premium flex plus carbon steel
- surface finish: chrome plated according to ISO 1456:2009
- the key body is plastic-coated

The smaller end is used for nipples with a 6.4mm outside diameter, while the larger end is used for assembling and disassembling for tubeless Mavic rim inserts. Plastic-coated body enables comfortable tightening and unscrewing of the nipples.

BLUE		RED	
CODE	ART.	CODE	ART.
618411	1635/2P	624952	1635/2P-US

## DOUBLE SIDED SHIMANO® SPOKE WRENCH

- material: premium flex plus carbon steel
- surface finish: chrome plated according to ISO 1456:2009
- the key body is plastic-coated

Shimano Spoke wrench is used for nipples with dimensions 4.3 and 4.4 mm on Shimano® Wheel System. Plastic-coated body enables comfortable tightening and unscrewing of the nipples. The length of the wrench is 100 mm, which enables access to the nipples which are mounted on the wheel hub.



BLUE		RED		DIMENSION
CODE	ART.	CODE	ART.	
618410	1634/2P	624951	1634/2P-US	4,3 x 4,4

## MAVIC R-SYS NIPPLE WRENCH

Unior's 1635/2AP Mavic spoke wrench is used for nipples with a 5.65mm outside diameter found on the new Mavic R-sys wheels. Plastic-coated body enables comfortable tightening and unscrewing.

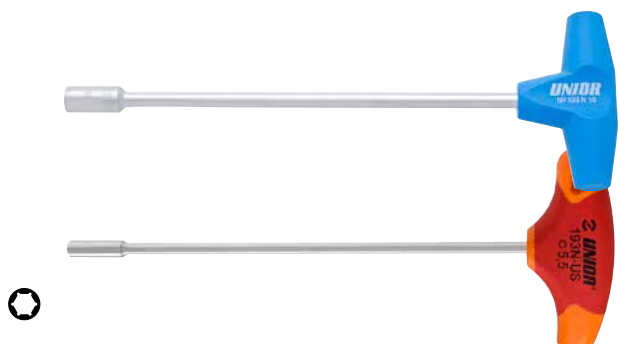


BLUE		RED	
CODE	ART.	CODE	ART.
623449	1635/2AP	624940	1635/2AP-US



## SOCKET WRENCH WITH T-HANDLE

- material: premium chrome vanadium steel
- handle - polypropylene
- surface finishing: blade chrome plated according to ISO 1456:2009



BLUE		RED		DIMENSION
CODE	ART.	CODE	ART.	
608283	193N	625120	193N-US	5.5

## SOCKET WRENCH WITH TBI HANDLE

- blade: premium hard chrome vanadium steel, entirely hardened and tempered
- blade chrome plated
- handle: ergonomic shape
- three component material
- hanging hole
- made according to standard DIN 3125



BLUE		RED		DIMENSION
CODE	ART.	CODE	ART.	
612672	629TBI	625213	629TBI-US	5.5

## HUB GENIE

Hub Genie is a unique solution for removing hub end caps while servicing the hubs or converting them to different standards. Thanks to the expanding mechanism, which grabs the hub cap evenly from the inside, even the most stubborn hub end caps are easy to pull-off. Compared with the traditional way of removing hub end caps, this tool won't damage caps or hub. Simply genius.

The tool is available in two versions; smaller one that covers hubs with 12 mm & 15 mm through axles and bigger version that works with 20 mm through axle hubs. Both versions feature plastic dipped handle for better ergonomics and grip.



CODE	ART.	DIMENSION
627271	1758/4	12 & 15
627272		20

## SPOKE TENSION METER

### HOW TO USE THE TOOL:

Unior's universal spoke tension meter measures the spoke tension on any kind of spoke. The analog spoke tension meter arrives calibrated and ready to use. To use, simply press the handle, position the spoke between the two pins and release the handle. The properly designed gauge is easy to read. Measured value, needs to be checked in the spoke information table, from where you read the actual tension, based upon the spoke specification. The printed table is included with the tool, together with more precise usage instructions. Additional included feature on the tool is also a spoke thickness gauge, which helps with the whole process. Simply insert the spoke in one of the upper openings and read the spoken thickness value.



CODE	ART.
623302	1752/2

## STRAIGHT PULL SPOKE PLIERS

Unior's straight pull spoke pliers is your ultimate solution for holding round straight pull spokes while building or truing wheels. Pliers feature ergonomic handles and smart spoke-locking mechanism, which enables firm grip during building or truing.

BLUE		RED	
CODE	ART.	CODE	ART.
628711	1753/2B	628712	1753/2B-US





## WHEEL ALIGNMENT GAUGE

- Material: construction steel, stainless steel and PE-polyethylene
- Precisely manufactured tools enable simple checking of wheels with dimensions from 16 to 29 inch, with or without tire.

### HOW TO USE THE TOOL:

The true checking tool is a tool designed to check the axle symmetry between the hub and the wheel rim. First we set an appropriate distance between the slides according to the wheel size. We lean the middle rest against the nave axle and put the frame with slides nearer to the rim so that the slides touch the rim. Then we fix the rest with a screw and check the other side of the wheel. This enables us to see if the nave is centered according to the rim. If the wheel is not centered, it needs to be trued up.



CODE	ART.	DIMENSION
618486	1690/1	16" - 29"

## FLAT SPOKE HOLDER

- material: polyamide

CODE	ART.
617588	1632



## AXLE VICE

- material: premium flex plus carbon steel
- surface finish: chrome plated according to ISO 1456:2009

### HOW TO USE THE TOOL:

The vice features two different diameter receptacles of 9 mm and 10 mm for inserting front or rear axles. Fits into jaws of engineers vice. The axle vice is easy to use. Two inserted springs will open the jaws automatically when axle vice is removed from engineers vice.



CODE	ART.
619715	1639/2

## SPOKE, BEARING AND COTTER GAUGE

This easy to use tool enables us to measure spokes dimensions and bearing and crank cotter diameters.



CODE	ART.	DIMENSION
620561	1629	357.5

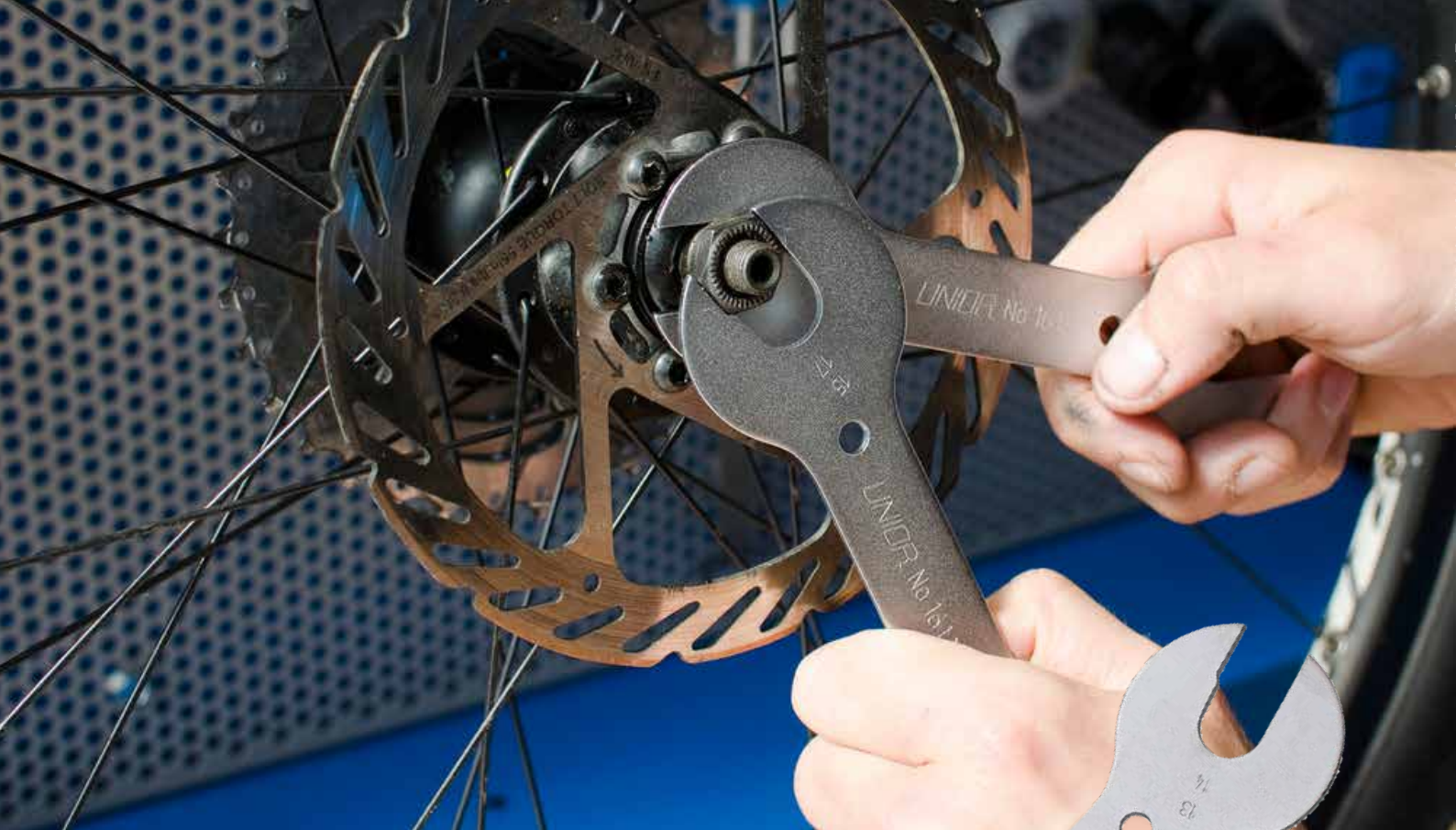
## CONE WRENCH, SINGLE SIDED

- material: premium flex plus carbon steel
- surface finish: chrome plated according to ISO 1456:2009
- double plastic dipped handles

The design and dimensions of our tools always adapt to new standards and bicycle models. The single sided cone wrench has a remarkable toughness, hardness, durability and tight fit. The ergonomic shape ensures good functionality. The cone wrench sits perfectly in the hand which makes the work fast and comfortable.

BLUE		RED		DIM
CODE	ART.	CODE	ART.	
615518		624920		13
615519		624921		14
615520		624922		15
615521		624923		16
615522		624924		17
615523		624925		18
615524		624926		19
615525		624927		20
617840		624928		22
621918	1617/2DP	624965	1617/2DP-US	23
617841		624929		24
628164		628173		26
619554		624964		27
624134		625022		28
615367		624938		30
615368		624915		32
615370		624916		36
615371		624956		40
615456				42
615457				44





## HUB CONE WRENCH

- material: premium flex plus carbon steel
- surface finish: chrome plated according to ISO 1456:2009

The hub cone wrenches are intended for the home mechanics or professional users. The extreme thin design with pen end jaw fit four popular sizes. These cone wrenches are used by every cyclist for quick repairs and daily maintenance of bicycles.

CODE	ART.	DIMENSION
615125	1612/2	13 x 14 x 15 x 17
615126		13 x 14 x 15 x 16



## CONE WRENCH SET



BLUE		RED		DIMENSION
CODE	ART.	CODE	ART.	
624042	1617/2DPCB	626602	1617/2DPCB-US	13 - 28 / 12

## SET OF CONE WRENCHES

- material: premium flex plus carbon steel
- surface finish: chrome plated according to ISO 1456:2009

The hub cone wrenches are intended for the home mechanics or professional users. The extreme thin design with pen end jaw fit four popular sizes. These cone wrenches are used by every cyclist for quick repairs and daily maintenance of bicycles.



CODE	ART.	DIMENSION
615120	1612PB	13/14 x 15/17. 13/14 x 15/16



**MADE  
FOR  
WORK.**



**R**

**TIRE & TUBE TOOLS**



## SET OF TWO TIRE LEVERS

- Set of two tire levers enables you to easily remove tires.
- They are made from firm plastic and enable work without any damages made to the rim.
- Useful for every professional mechanic or home user.



CODE	ART.
621984	1657BLUE
624142	1657BLACK
624143	1657GREEN
624144	1657RED





## SET OF TIRE LEVERS IN A BOX, 27 PAIRS

- Set of 27 tire levers can be placed in a bicycle shop on the counter next to the cashier.
- Tire levers are fixed in a high quality cut out foam which can be refilled and reused for several times.
- Set includes blue, black, red and green tire levers.
- On the back side of the box you can find bar codes for each of the four items.



BLUE		RED		DIMENSION
CODE	ART.	CODE	ART.	
624089	1657ST	626988	1657ST-US	27 pcs

## SET OF TIRE LEVERS 27 PAIRS



BLUE		RED		DIMENSION
CODE	ART.	CODE	ART.	
625044	1657STR	627270	1657STR-US	27 pcs

## SET OF TWO METAL TIRE LEVERS

- material: premium sheet metal
- surface finish: chrome plated according to ISO 1456:2009

Metal tire levers are used on wheels where mounting and dismounting the tires with plastic tire levers is difficult or impossible. Unior's 1657/2A tire levers can be stuck behind the spoke, with help of the hook on the end of the lever.



CODE	ART.
623387	1657/2A



## VALVE CORE REMOVER

Valve core remover can install and remove Schrader and Presta valve cores. Precisely made from tool steel and hexagonal shape, which enables good grip.

**NEW**



CODE	ART.
628912	1755/2





## SCHWALBE TIRE TREAD CUTTER



- The Tread Cutter is the first of a kind plier designed to cut tire treads and was developed specifically for MTB tires. The main benefit of the pliers is the cutting height adjustment slider, which enables cutting of each tread on the same height and therefore making the custom tire the most optimal.
- Cutting tires produces more optimal riding. For example shortening centre treads on a mud tire, results for easier rolling. Or the transition lugs in the shoulder area can be trimmed, giving more free space, and making the tread more aggressive. Lugs that have been worn "round" can have a straight edge again.

CODE	ART.
624835	2730/4BI

## TIRE SETTER



- material: premium plus carbon steel
- drop forged, entirely hardened and tempered
- surface finish: chrome plated to standard ISO 1456:2009
- double plastic dipped handles

The pliers are intended for fast straightforward tire removal - especially tires that have already bonded with the rim. Using the pliers, we compress the tire so that it detaches from the bead of the rim. A strong grip facilitates the removal of the tires. The well designed shape of the pliers enables the separation of the tire from the rim and ensures that the inner tube is not punctured when removing the tire. The pliers are chromed and laminated with plastic for a more comfortable grip.

BLUE		RED		DIMENSION
CODE	ART.	CODE	ART.	
617586	1601/2DP	624948	1601/2DP-US	300

## BIKE FRAME SPREADER TOOL



- material: premium flex plus carbon steel
- ergonomic heavy duty double component handle
- surface finish: chrome plated to standard ISO 1456:2009

The bike pincers are designed for quick and easy removal of bike tires and tubes on older and city bikes with metal frames. The long handle enables you to generate sufficient force to loosen the rims allowing you enough space to simply remove the tire or tube from the wheel without having to dismount the entire wheel. Thanks to its spring lock, the tool will always remain in position allowing you to use it single handedly.

BLUE		RED	
CODE	ART.	CODE	ART.
620077	1678/2BI	624944	1678/2BI-US



MADE  
FOR  
WORK.



S

WHEEL TRUING STANDS & ACCESSORIES

## PRO TRUING STAND



- material: premium plus carbon steel
- Accepts wheels from 16 to 29 inch with or without tire.
- Supports hubs up to 157 mm width.
- Truing of 20 mm or other dimension axle wheels requires additional adaptors.
- This stand for professional use is specially designed for bicycle repair shops. It can be bench-mounted or vise-held.
- The calipers enable simultaneous radial control of the wheel position on both sides, with an additional possibility to control radial symmetry in relation to the hub.
- The geometry of the callipers enables a simultaneous axial control for accurate truing of the rim.
- The calipers have plastic coated tips to prevent scratching the rim.
- The upright arms position can be adjusted with an upright adjustment knob to fit the axle width. The caliper arm position can be adjusted to fit the wheel radius and the caliper tip distance can be adjusted to fit the rim width.
- When changing the wheel, the spring loaded upright arms and the caliper arm can be quickly pulled away, automatically springing back to a set position when inserting a new wheel. This enables faster truing of several same size wheels.
- Truing control of brake rotors can be done with additional calipers inserted into slots in the upright arm.
- Additional holes are useful for storing all the three dimension hubs inserts 1689.3 (12, 15 and 20 mm).
- Additional nuts in the bottom part of the stand enable easy tightening to a workbench.

### IMPORTANT!

1689 professional wheel centering stand arm can get out of center after being used frequently. Controlling caliper arm enables us, to calibrate the stand arm back to its center position.

CODE	ART.
623059	1689

## PORTABLE TRUING STAND



- material: premium flex plus carbon steel
- It is possible to center wheels with dimension from 16 to 29 inch, with or without tire.
- Supports hubs up to 157 mm width.

This stand is intended especially for the enthusiast. It is very easy to use, light (2.3 kg) and does not take up much space. The left bracket is fixed and welded to the lower profile, while the right bracket is flexible to different all axle widths.

### HOW TO USE THE TOOL:

- The stand can be folded by folding the leg to the lower profile.
- The stand can also be mounted on the work bench with screws to increase stability.
- The control sensor is single sided so first the wheel shall be centered on one side, then turned around and centered on the other side.
- The additional function enables true checking of wheel discs.

CODE	ART.
623060	1688



## POCKET WHEEL TRUING TOOL

- Home users, cycling team mechanics, world travelers and others cyclist can use the Unior 1753/6 truing tool to work on wheels anywhere they go. With the velcro strap the tool can be mounted to any front fork and rear seat stay of the frame.
- The indicator is then used normally as on other truing stands. The tool can be also used for truing rotors.
- The 1753/6 pocket truing tool is light and small and easily fits in any back pack.



CODE	ART.
623310	1753/6

## ROTOR TRUING GAUGE

- It enables us true checking of brake discs.
- Brake caliper is used on the 1689 professional wheel centering stand.



CODE	ART.
622603	1689.2

## CANNONDALE LEFTY® ADAPTOR FOR TRUING STAND

Unior's 1689.6 Lefty adaptor is used for truing Cannondale's Lefty® front wheels, which have specific asymmetric shape and dimension and therefore cannot be used on the centering stand with normal adaptors.

### COMPATIBLE WITH:

- Lefty 50 - Standard hub
- Lefty 60 - Supermax hub



CODE	ART.
623450	1689.6

## RIM CALIPER FOR 1688

Spare part for 1688 wheel centering stand for home use.



CODE	ART.
621616	1688.2

## FAT BIKES CALIPERS FOR PRO TRUING STAND

Calipers for fat bikes are compatible with Unior professional truing stand 1689. Calipers support wheel truing of rims from 50 – 100mm width with tires up to 5.0 width.



CODE	ART.
626456	1689.7

## AXLE ADAPTOR

- Adaptor for truing wheel sets



CODE	ART.	DIM
623004	1689.3	12
623005		15
621617		20

## PRO TRUING STAND CALIBRATION TOOL

1689 professional wheel centering stand arm can get out of center after being used frequently. Controlling caliper arm enables us, to calibrate the stand arm back to its center position.



CODE	ART.
621615	1689.1

## SPARE TIP FOR CALIPER

Spare plastic tip for calipers 1688.2, 1689.2, 1689.4 on stands 1689, 1688.



CODE	ART.
623256	1689.5



MADE  
FOR  
WORK.



REPAIR STANDS & ACCESSORIES

# BIKEGATOR FOLDING STANDS

The Bike Gator! The new generation of Unior 1693A(1693AS) bike stand.

- The bike repair stand is the basic working tool both for service workshops and cycling enthusiasts.
- It is easy to assemble and the support tubes are fold together enabling easier transportation between work place.
- Maximum load capacity is 30kg
- Suitable for tubes with diameter of min. Ø24 mm and max. Ø32 mm.
- Weight of the stand without tool tray is 5.7kg
- Replaceable rubber jaw covers, item 1693.11
- Code 623222 article 1693AS is stand with support tubes and jaw with adjustable nut

## ADVANTAGES:

- The stand features a new array of precision aluminum and steel parts which offer stiffness and durability.
- NEW Jaw mount and rotation system.
- improved sliding system
- Stand is adjustable by height between 980 and 1500mm.
- NEW stylish metal tool tray with interchangeable SOS foam insert.



1  
AUTO-ADJUST



2  
MANUAL-ADJUST



3  
QUICK RELEASE



4

BLUE		RED		1	2	3	Ø↓	Ø↑	4	👤	
CODE	ART.	CODE	ART.								
621470	1693A	625009	1693A-US	X			24 mm	32 mm	X	30 kg	6,5 kg
623222	1693AS	625010	1693AS-US		X			40 mm	X		
624000	1693A0	625147	1693A0-US	X				32 mm			5,7 kg
624001	1693AS0	625148	1693AS0-US		X			40 mm			
627767		1693AQ				X	22 mm	60 mm	X	30 kg	6,5 kg
627768		1693AQ0				X					

## PRO REPAIR STAND WITH SINGLE CLAMP



- Repair bike stand with fixed plate is designed for service workshops and every day use.
- Fixed plate is ergonomically designed. Maximum load capacity is 30kg, which enables the servicing of heavier bikes.
- Suitable for tubes with diameter of min. Ø24 mm and max. Ø32 mm.
- Stand is adjustable by height between 947 and 1570 mm.
- weight of the stand is 36kg
- Replaceable rubber jaw covers, item 1693.11
- Code 623226 article 1693B1 is stand with jaw with spring and without fixed plate
- Code 623223 article 1693BS is stand with fixed plate and jaw with adjustable nut
- Code 623227 article 1693BS1 is stand with jaw with adjustable nut and without fixed plate
- Repair bike stand 1693B1 and 1693BS1 is designed for floor or ceiling mount.



1 AUTO-ADJUST



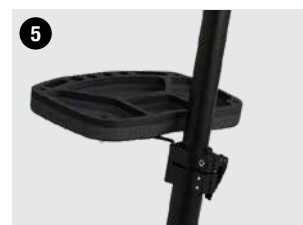
2 MANUAL-ADJUST



3 QUICK RELEASE



4 FIXED PLATE 1693B



5

CODE	ART.	DIM
623231	1693.4B	572x572x12

BLUE		RED		1	2	3	Ø↓	Ø↑	4	5	30 kg	👤
CODE	ART.	CODE	ART.									
621471	1693B	625011	1693B-US	X			24 mm	32 mm	X	X	6,5 kg	
623226	1693B1	625012	1693B1-US		X			40 mm	X	X		
623223	1693BS	625013	1693BS-US	X				32 mm		X		5,7 kg
623227	1693BS1	625014	1693BS1-US		X			40 mm		X		
627769		1693BQ				X	22 mm	60 mm	X	X	6,5 kg	
627770		1693BQ1				X					X	5,7 kg



# PRO REPAIR STAND WITH DOUBLE CLAMP

- Repair bike stand with fixed plate and two clamps is designed for service workshops and more demanding users.
- Stand enables work for two mechanics at the same time on two bikes.
- The new plastic cup enables storage of tools and spare parts.
- Fixed plate is ergonomically designed. Maximum load capacity is 45kg, which enables to service heavier bikes.
- Stand is adjustable by height between 947 and 1570 mm.
- Weight of the stand is 56,5kg.
- Additional accessories - paper roll holder.
- Suitable for tubes with diameter of min. Ø24 mm and max. Ø32 mm.
- Replaceable rubber jaw covers, item 1693.11



1  
AUTO-ADJUST



2  
MANUAL-ADJUST



3  
QUICK RELEASE



4  
FIXED PLATE 1693C



5

CODE	ART.	DIM
623232	1693.4C	698 x 698 x 12

BLUE		RED		1	2	3	Ø↓	Ø↑	4	5	👤
CODE	ART.	CODE	ART.								
622581	1693C	625015	1693C-US	X			24 mm	32 mm	X	X	45 kg
623228	1693C1	625016	1693C1-US		X			40 mm	X	X	
623224	1693CS	625017	1693CS-US	X				32 mm		X	
623229	1693CS1	625018	1693CS1-US		X			40 mm		X	
623230	1693CS2	625019	1693CS2-US	1X	1X			40 mm		X	
627771		1693CQ				X	22 mm	60 mm	X	X	56,5 kg
627772		1693CQ1				X					X

## PRO REPAIR CLAMP, AUTO ADJUSTABLE

Suitable for tubes with diameter of min. Ø24 mm and max. Ø32 mm.



BLUE		RED	
CODE	ART.	CODE	ART.
621472	1693.1	624913	1693.1-US

## PRO REPAIR CLAMP, MANUALLY ADJUSTABLE

Suitable for tubes with diameter of min. Ø24 mm and max. Ø40 mm. Easy accessible screw enables us, to modify the jaw opening and pressure when closed. The screw can be turned by hand without use of any wrench.



BLUE		RED	
CODE	ART.	CODE	ART.
623206	1693.1S	624912	1693.1S-US

## MASTER SHOP REPAIR CLAMP

Our most durable and rigid clamp is designed to support even the heaviest bikes. Clamp frame design enables the jaws to open and close parallel to each other and thus clamp the bike gently and securely in place. Thanks to round shape of clamping jaws, clamping force is distributed evenly around the clamping area. Low profile design of clamping jaws only requires 5 cm of exposed seat post for clamping. Jaws are covered in grippy replaceable rubber covers. Clamp is operated via ergonomically shaped rotating handle, which allows precise control of the clamping force. Master Shop Clamp mounting adapter is interchangeable and fits adapters for repair stands of other brands (parts not included).

- Durable and rigid, designed to support even the heaviest bikes.
- Round shape of clamping jaws allows clamping force distribution over the whole clamping area.
- Low profile, only 5 cm of exposed seat post needed to clamp the bike.
- Replaceable rubber jaw covers.
- Ergonomic rotating handle for great control of the clamping force.
- The clamp is compatible with all current Unior repair stands.
- Interchangeable adapter for compatibility with repair stands of other brands (parts not included).
- Made in Europe.



**NEW**

CODE	ART.
629164	1693.1M

## PRO SHOP CLAMP

- Pro Shop Clamp is Unior's high-end offer for bike shops. It features advanced quick release system that enable quick and efficient work on any bicycle.
- Quick release system enables the mechanic to press the jaws by hand, at which point clamp already grips the seat post of a frame with sufficient force to hold the bicycle in place. Rotate the handle and additional tension is applied to the jaws to ensure firm grip.
- Clamp can grip tubes of any shape, with diameter of minimum Ø22mm to maximum Ø60mm.
- Pro Shop Clamp has a quick release button, which is used to release the jaws after initial tension release with the rotating handle.
- Height of the jaws is 70mm, so it works with smaller sizes of seat posts as well as with dropper posts.
- The clamp is compatible with all of Unior's repair stands.



CODE	ART.
627095	1693.1Q

## WALL OR BENCH MOUNT CLAMP, QUICK RELEASE

- Bench or wall mount option.
- Intended for professional and home workshops.
- Clamp can grip tubes of any shape, with diameter of minimum Ø22mm to maximum Ø60mm.
- Easy accessible screw enables us, to modify the jaw opening and pressure when closed. The screw can be turned with hand, without use of any wrench.
- Code 623225 article 1693.2S is wall and bench jaw with adjustable nut



CODE	ART.
627773	1693.2Q

## WALL OR BENCH MOUNT CLAMP, AUTO ADJUSTABLE

- Bench or wall mount option.
- Intended for professional and home workshops.
- Suitable for tubes with diameter of min. Ø24 mm and max. Ø32 mm.
- Easy accessible screw enables us, to modify the jaw opening and pressure when closed. The screw can be turned with hand, without use of any wrench.
- Code 623225 article 1693.2S is wall and bench jaw with adjustable nut



BLUE		RED	
CODE	ART.	CODE	ART.
622589	1693.2	625020	1693.2-US



## WALL OR BENCH MOUNT CLAMP, MANUALLY ADJUSTABLE



- Bench or wall mount option.
- Intended for professional and home workshops.
- Suitable for tubes with diameter of min. Ø24 mm and max. Ø40 mm.
- Easy accessible screw enables us, to modify the jaw opening and pressure when closed. The screw can be turned with hand, without use of any wrench.

BLUE		RED	
CODE	ART.	CODE	ART.
623225	1693.2S	625021	1693.2S-US

## PRO ROAD REPAIR STAND



- Pro Road Repair Stand is a sophisticated product, developed in cooperation with some of the best World Tour mechanics.
- Stand is built from strong aluminum and steel parts and only weights 5,1 kg.
- In comparison to traditional three-leg fork mount stands, Unior's double-leg design takes up less space once unfolded and offers mechanic more working space. Stability of the stand is equal as with three-leg designs.
- The upper assembly is angle adjustable, while the complete stand is adjustable by height.
- The stand is suitable for work on lighter mountain bikes as well.
- The upper assembly is also compatible with Unior's Pro Workshop stands with plate.
- The stand can be also upgraded to support bicycles with through axles, with additional through axle adaptor – article number 1693R.2.

CODE	ART.
627529	1693R

## PRO ROAD REPAIR STAND, WITH PLATE



PRO ROAD REPAIR STAND,  
WITHOUT PLATE

1693RP1

- Pro Road Repair Stand with plate is a sophisticated product, developed in cooperation with some of the best World Tour mechanics.
- The stand has a fork mount system and is specially designed to work on bikes, where standard clamping-system is not suitable to use.
- Stand is built from strong aluminum and steel parts and is suitable for workshop use, due to its steel plate, which offers great stability
- The upper assembly is angle adjustable, while the complete stand is adjustable by height.
- The stand is suitable for work on mountain bikes as well.
- The stand can be also upgraded to support bicycles with through axles, with additional through axle adaptor – article number 1693R.2.

CODE	ART.
628353	1693RP
628794	1693RP1

## ELECTRIC REPAIR STAND

Designed and developed for technicians to work smarter, not harder. The stand is constructed around heavy-duty one-piece aluminum column, which gives a great stability and at the same time holds all wires on the inside, so there's nothing in a way when working on a bike. It is strong enough to lift even the heaviest bicycles to the desired height with ease, so the bicycle is always in the most ergonomic position to work on. Electric repair stand is not just powerful, but also smart. It features endless height adjust, but it can also lift or descend a bike automatically with a push of a button. It also stops on its own when bike reaches the ground. Thanks to the travel adjust limiters; you can limit its travel, so it always stops at the desired height. Build in safety system keeps the technician and the bicycle on the stand safe and makes sure nothing goes wrong.

### FEATURES:

- Automatic stopping system with a build in safety feature to keep technician and bicycle on the stand safe
- Endless height adjust
- Travel adjust limiters
- Main electricity supply cable coming in from the top of the stand, so nothing is in the work area
- Hidden wires
- Two USB A charging port
- Equipped with Master shop repair clamp 1693.1M
- Anti-slip clamp interface
- Main column made of steel and bolted together creating a super rigid frame
- Secures directly to the floor or on a heavy-duty metal fixed plate
- Optional heavy-duty large fixed plate with floor leveling function
- No assembly needed, just fix it in place, plug in the electricity and start working

### TECHNICAL SPECIFICATIONS:

- Measurement: W750xL750xH2072 mm
- Weight: 106 kg (with a steel fixed plate)
- Maximum height: 1780 mm
- Load capacity: 400N (40kg)
- Power: 0,25 kW
- Steering voltage: 5 V
- Input: 220 V; 50 Hz
- Movement speed: 3.3 m/min
- IP rating: IP30 – inside use only
- Noise level: 55 dB
- CE compliant

## FIXED PLATE FOR 1693EL



CODE	ART.	DIM
628743	1693EL.1	740x740x20

220V		110V		
CODE	ART.	CODE.	ART.	1
628687	1693EL	628789	1693EL-110	X
628742	1693EL1	628790	1693EL1-110	



\* Electric stand comes in 220V and 110V version, with our without base plate.





## FRAME FOR DOUBLE CLAMP PRO REPAIR STAND, WITHOUT CLAMPS AND PLATE

Build your own bike repair stand with 2 clamps. You can choose between 3 different clamps (1693.1, 1693.1S, 1693.1Q), add a fixed plate to the frame (1693.4C) or just fix the frame into the floor.



CODE	ART.
623249	1693.5C

## FIX IT YOURSELF WITH STAINLESS STEEL PUMP

- Fix-it-yourself bicycle repair stand is used in public places: along bike trails, bike parks, campsites, in front of hotels, city centers and other tourist destinations, especially popular with cyclists. Stands are equipped with tools for basic repair and a high quality outdoor specific steel pump. On the stand, you can find an adjustable wrench, chain tool, Schrader & Presta valve tool, set of hex wrenches (2.5 – 8), spoke key 3.3, 3.45 and DT, TX wrenches 10, 25, PH and flat screwdriver, cone wrenches sizes 13, 14, 15, 17 and set of tire levers.
- Bike can be hung on the stand on the specially designed hangers, protected with rubber.
- All tools are attached to a strong wire and when not used, are neatly stored inside the stand frame.
- The stand must be bolted to the ground. The bolts are not included.

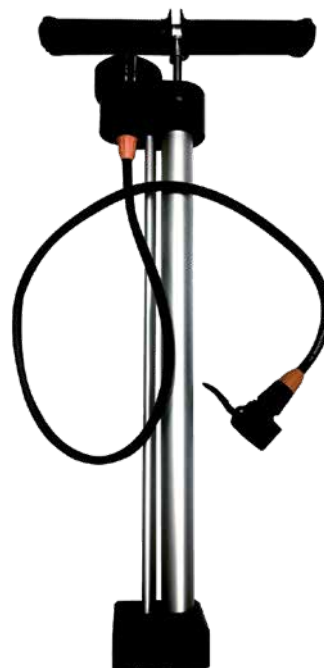


CODE	ART.
628425	1693ES

## OUTDOOR STAINLESS-STEEL PUMP FOR STANDS 1693E AND 1693ES

- Pump is intended for outdoor use on stands 1693E and 1693ES and works on all versions of stands.
- housing is made from aluminum
- handle and the cartridge tube are made from stainless steel.
- rubber grips
- manometer goes up to 10bar – filled with silicone liquid and made from stainless steel
- SKS Multivalve head

NEW



CODE	ART.
629021	1693ES.OSPump

## FIX-IT-YOUR-SELF WALL MOUNT

- Fix-it-yourself wall mount bike repair device is used in public places, such as bike parks, bike paths, pubs...
- material: galvanised steel
- coating: powder coating
- wires for tools: stainless steel

### THE STAND INCLUDES:

- set of a hexagon wrenches 2,5-10
- crosstip screwdriver PH 2x100
- flat screwdriver 5,5x100
- hub cone wrench 13/14
- hub cone wrench 15/17
- metal tire lever 2pcs
- Y torx wrench 10, 15, 25
- disc brake piston spreader
- rotor truing fork



CODE	ART.
627759	1693W

## THROUGH AXLE ADAPTOR FOR 1693R

Through axle adaptor is compatible with 1693R series road stands. It enables fixation of bikes with 12 mm or 15 mm through axles. To mount the bicycle on the adaptor, simply remove the wheel from the bike and install the bike's through axle back in to the fork or frame; adaptor then clamps the through axle and secures the bike in place.



CODE	ART.	DIMENSION
628710	1693R.2	12/15mm

## TOOL TRAY FOR REPAIR STANDS

- Tool tray is distinguished by nicely separated opened drawers with additional space for hanging different tools. Tray fits with all the Union stands.
- The 1693.3 new tool tray consists out of a strong thin metal plate with two rails and an stylish SOS foam tray.
- The foam tray is interchangeable, item code 1693.6.
- The tool tray fits into the new generation of 1693 stands (made after July 2014).
- Check with you local distributor for compatibility.



## SOS SPARE TOOL TRAY FOR 1693.3 TRAY

Spare SOS foam tray for 1693.3 tool tray.



BLUE		RED	
CODE	ART.	CODE	ART.
623821	1693.6	624971	1693.6-US

BLUE		RED	
CODE	ART.	CODE	ART.
623820	1693.3	624902	1693.3-US

## BAG FOR BIKEGATOR BIKE STAND

- Strong and quality made bag is intended for protection and carrying of the 1693A (1693AS) BikeGator stand.
- It features shoulder and hand straps, two level storage for stand frame and separated jaw and tool tray.
- Useful to carry on plane, in the car or just to store in your workshop.
- material: polyester fabric



CODE	ART.	DIMENSION
624035	1693BAG	1100x300x10

## REPLACEABLE RUBBER COVERS FOR CLAMP 1693.1, 2 PCS SET



CODE	ART.	DIMENSION
621961	1693.11	96,5
627266		70

## REPAIR STAND TOOL TRAY COLLAR

The collar allows attachment of the tool tray and other accessories on classic repair stands, in any chosen position or height. The collar can be easily installed on the upper sliding tube of the repair stand and fixed in place with the quick release lever. All Unior 1693 series repair stands allow attachment of one tool tray, this collar allows simultaneous attachment or additional tool tray or other accessories.

Fits all Unior 1693 models of classic repair stands made after July 2014.

**NEW**



CODE	ART.
629065	1693.16

## REPLACEABLE RUBBER COVERS FOR CLAMP, ROUND, 2 PCS SET

Set of two replacement rubber covers for Master shop repair clamp 1693.1M.

**NEW**



CODE	ART.
626337	1693.17

## ADJUSTABLE SCREW FOR CLAMP 1693.1 AND 1693.1S

Replacement of the spring with the screw, enables us to modify the jaw opening and pressure when closed. The screw can be turned with hand, without use of any wrenches.



CODE	ART.
623205	1693.12

## LAPTOP HOLDER WITH FOLDABLE ARM FOR 1693EL

Foldable laptop holder mounts to the Unior's electric repair stand column and provides optimal placement for laptop. The setup will make work more comfortable and productive as the computer will be right where you need it and you'll not have to turn around to the workbench to access it. Tray is large enough to support laptops up to the size 15" and can rotate for 90 degrees left or right. Foldable arm is 500 mm long and allows to pull the laptop over the bike, closer to you, or move it out of work area when not in use.

**NEW**



CODE	ART.
629025	1693EL.2



## SMALL PARTS ORGANIZER WITH FOLDABLE ARM FOR 1693EL

Foldable small parts organizer mounts to the Unior's electric repair stand column and provides optimal placement for it. The setup will make work more comfortable and productive as the smaller parts will be right where you need it and you'll not have to turn around to the workbench to access it. Parts organizer can be rotated 90° left or right, foldable arm is 500 mm long and allows to pull the organizer over the bike if needed or fold it out of work area when not in use. Organizer is compatible with all sizes of plastic boxes in our range. Plastic boxes are not included with organizer and are sold separately.

**NEW**



CODE	ART.
629026	1693EL.3



## TABLET HOLDER WITH FOLDABLE ARM FOR 1693EL

Foldable tablet holder mounts to the Unior's electric repair stand column and provides optimal placement for tablet. The setup will make work more comfortable and productive as the tablet will be right where you need it and you'll not have to turn around to the workbench to access it. Holder features protective rubber on the surface to prevent tablet from scratching and adjustable arm to accommodate tablets with width from 210 mm to 340 mm. Holder mounts under 67 degrees angle for easier swiping and better view and can be rotated 90 degrees left or right. Foldable arm is 500 mm long and allows to pull the holder over the bike if needed or move it out of work area when not in use.

**NEW**

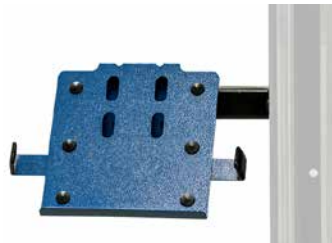


CODE	ART.
629027	1693EL.4

## FRAME MOUNT TABLET HOLDER FOR 1693EL

Tablet holder mounts to the Unior's electric repair stand column and provides optimal placement for tablet. The setup will make work more comfortable and productive as the tablet will be right where you need it and you'll not have to turn around to the workbench to access it. Holder features protective rubber on the surface to prevent tablet from scratching and adjustable arm to accommodate tablets with width from 210 mm to 340 mm. Holder mounts under 67 degrees angle for easier swiping and better view.

**NEW**



CODE	ART.
629029	1693EL.6

## FRAME MOUNT PAPER TOWEL HOLDER FOR 1693EL

Paper towel holder mounts to the Unior's electric repair stand column and provides optimal placement for it. The setup will make work more comfortable and productive as the paper towel will be right where you need it and you'll not have to turn around to the workbench to access it.

**NEW**



CODE	ART.
629031	1693EL.8

## TOOL TRAY WITH FOLDABLE ARM FOR 1693EL

Foldable tool tray mounts to the Unior's electric repair stand column and provides optimal placement of tool tray. Tray will be right where you need it, providing perfect placement for the tools and small parts, thus increasing work productivity as you will not need to rotate to the workbench. Tool tray can rotate for 90 degrees left or right. Foldable arm is 500 mm long and allows to pull the tool tray over the bike if needed or move it out of work area when not in use. Tool tray is made of thin metal plate and SOS foam tray, with room to hang different tools and open compartments for storage.

**NEW**



CODE	ART.
629028	1693EL.5

## FRAME MOUNT TOOL TRAY FOR 1693EL

Tool tray mounts to the Unior's electric repair stand column and provides optimal placement of tool tray. Tray will be right where you need it, providing perfect placement for the tools and small parts, thus increasing work productivity as you will not need to rotate to the workbench. Tool tray is made of thin metal plate and SOS foam tray, with room to hang different tools and open compartments for storage.

**NEW**



CODE	ART.
629030	1693EL.7

## FRAME MOUNT HOLDER FOR SMALL PARTS ORGANIZER FOR 1693EL

Small parts organizer mounts to the Unior's electric repair stand column and provides optimal placement for it. The setup will make work more comfortable and productive as the smaller parts will be right where you need it and you'll not have to turn around to the workbench to access it. Organizer is compatible with all sizes of plastic boxes in our range. Plastic boxes are not included with organizer and are sold separately.

**NEW**



CODE	ART.
629032	1693EL.9

## HEIGHT EXTENSION KIT FOR 1693EL

- Do you or your employee(s) fit in the taller category? Or you would like to access the bicycle from a different angle?
- Height extension kit is a perfect solution for taller technicians as it lifts the highest and the lowest position of the clamp on your electric repair stand 25 cm higher. As the bicycle can be lifted higher from the ground it also enables a view and access that was previously not possible or at least not practical.
- Extension mounts between the electric repair stand column and the metal fixed plate or the floor. The height extension kit is only compatible with the Unior electric repair stands with the aluminum main column.

**NEW**

CODE	ART.
629165	1693EL.11



## CLAMPING BRACKET WITH HANDLE FOR CLAMP FOR 1693EL

**NEW**

CODE	ART.
629166	1693EL.12



## REMOTE CONTROL SET

- Control your electric repair stand wireless from your bench, without ever touching the buttons on the stand's control panel. Buttons on the electric repair stand remote have the exact same double functionality as buttons on the control panel on the electric repair stand. Most practical functions are to lift/lower the bike to the height of the adjustable limiter or to the floor or hold & release the button at the desired height.
- Remote Control Set 1693EL.20 includes the remote and small circuit board that is super easy to install; installation will only take couple of minutes and doesn't require any pairing or additional setting when installed. Coded remote signal will prevent interfering with other remotely controlled repair stands in the same room.
- Remote Control Set 1693EL.20 is compatible with Unior's Electric Repair Stand 1693EL version 2.0, delivered from April 2021 and onwards.

**NEW**

CODE	ART.
626223	1693EL.20





MADE  
FOR  
WORK.

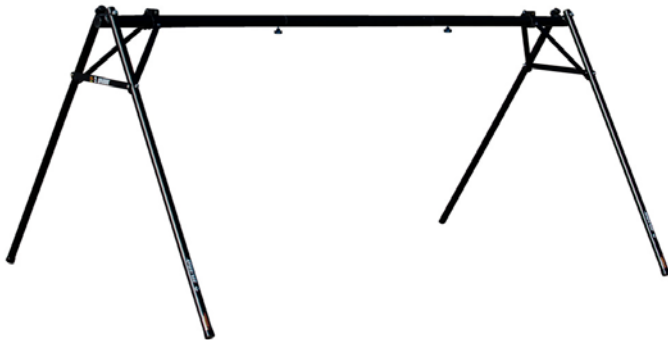


BIKE STORAGE



## EVENT STAND

- Event stand helps you store up to 10 bikes by the saddle. Useful at outdoor races and events as well as for indoor storage.
- Event stand can be used in long or short version: Length of useful bike holding area in the long version is 2090 mm and in short version 1260 mm. Length is easily adjustable with a connecting tube.
- Stand comes in a compact bag that stores all the parts securely and it's easy to carry around.
- Stand is made from aluminum parts and weights only 7.5kg in longer version.



CODE	ART.
625500	1693F

## DISPLAY STAND, ADJUSTABLE

- Don't hassle with the placement of your bike, leave it in the garage, place it on the shop floor or display it in your living room. Any bike, anywhere. Unior's adjustable floor stand is suitable for everything from kid's bicycles to big 29+ monsters. Top part is adjustable in height (for 123 mm) and angle, while the rubber layer protects your frame against scratches. Slot is wide enough to accommodate all popular rear axle dimensions.
- Stand is made out of stainless steel and offers great stability, regardless of the bicycle's weight. Base of the stand is equipped with high-quality rubber inserts that prevent movement and protect floor surface. Black finish guarantees compatibility with any style of shop, office or home.



CODE	ART.
626542	1693H

## BANNER FOR EVENT STAND 1693F, SET 2 PIECES

- Banner is made of durable canvas and is attached to the A frame of the Event Stand with zip ties through metal grommets.
- We offer custom banners for your Event Stand 1693F. You can have your company, team or shop logo printed on the banner and get more people to see it.
- Contact us for more details about custom banner.



CODE	ART.
627083	TRAN.1693F

## BIKE LIFT

Weight capacity: 50 lb or 22,5 kg.

### HOW TO USE THE TOOL:

The bike lift is a simple device which enables a bike to be stored under the ceiling. The lift assembly is fixed to the ceiling. The bike can be raised or lowered by using the rope.



CODE	ART.
618371	1684

**MADE  
FOR  
WORK.**



**TOOL SETS**



# MASTER TOOL KIT

Master Kit is a big brother to our popular Pro Kit, designed and tested by the professional mechanics for the professional mechanics. Thoroughly thought out layout with extremely durable tool pockets and SOS foam trays for practical and secure organization of your tools. Pockets are sized on the dimensions of our tools, while the foam cutouts are a perfect match for them. Personalization of the case is possible with additional pockets and modular storage space in the bottom part of the case. Tool case also features wheels and retractable handle for easy transportation and is also perfect for air travel. We picked 94 pieces of our tools for this portable set that will suit your needs – no matter if you're a shop, mobile, team or demanding homemechanic.

- The toolbox is designed especially for bike tools; it's made of heavy duty plastic and is waterproof and dustproof.
- Flaps in the lid can be closed tightly with the Velcro straps; when closed, they also secure the tools in place. Open flaps and inner part of the lid are equipped with 44 individual pockets to carry your tools. The biggest pockets can take our T-handle hexes up to size 10, and a special small pockets can securely hold L-shaped hex down to size 1.5 or similar small tools, so nothing ever gets lost.
- Two side tool trays with cut out SOS foam, dimensions 280 mm x 250 mm, will keep your tools in place. When not in use the trays are stored in the case, when working the trays can be fixed on the side of the case, enabling you to have all of the tools always at hand and more space on the table for other items. Side trays are built with metal chassis for stability and strength.
- Additional SOS foam tray for tools storage (dimensions 385 mm x 280 mm) at the bottom of the case.
- Small parts organizer with three compartments and modular parts to build up to 21 compartments
- Additional space for spare parts and/or lubes.

## ADVANTAGES:

- Fully equipped tool case with 94 pieces of carefully selected high-quality Unior tools
- Wheels and retractable handle with safety latch for easy transportation
- The pockets are sewed together with durable nylon thread
- Left and right SOS foam tray (280 mm x 250 mm) with tools cutouts and metal bottom that hooks on the edge of the case.
- SOS foam tray (385 mm x 280 mm) at the bottom of the case with cutouts for bigger tools
- Foam cutouts feature laser engraved names/codes of the tools
- Waterproof and dustproof in accordance with IP67 certificate
- Watertight seal around lid
- Automatic pressure release valve
- Easy to open/close double throw latches
- Load tested soft grip handle
- Robust case from heavy-duty composite
- Corrosion free nylon pins
- Option to lock the case with a padlock (not included)
- Aluminum divider at the bottom of the tool case to keep your tools organized
- Flaps neatly close into the lid of the tool case
- The lid can carry T handle hexes up to size 10
- Special safety tight pockets to hold small tools
- 44 pockets in total, three SOS foam trays that can fit 50 or more tools, small parts organizer



NEW



BLUE		RED	
CODE	ART.	CODE	ART.
629066	1600MASTERKIT	629067	1600MASTERKIT-US





**NEW**



## MASTER KIT TOOL CASE

Master Kit Tool Case is a perfect starting point for the ultimate toolbox of your dreams. Equip it with the tools of your own selection and enjoy all the customization options this case provides.

- The toolbox is designed especially for bike tools; it's made of heavy duty plastic and is waterproof and dustproof.
- Flaps in the lid can be closed tightly with the Velcro straps; when closed, they also secure the tools in place. Open flaps and inner part of the lid are equipped with 44 individual pockets to carry your tools. The biggest pockets can take our T-handle hexes up to size 10, and a special small pockets can securely hold L-shaped hex down to size 1.5 or similar small tools, so nothing ever gets lost.
- Two side tool trays with cut out SOS foam, dimensions 280 mm x 250 mm, will keep your tools in place. When not in use the trays are stored in the case, when working the trays can be fixed on the side of the case, enabling you to have all of the tools always at hand and more space on the table for other items. Side trays are built with metal chassis for stability and strength.
- Additional SOS foam tray for tools storage (dimensions 385 mm x 280 mm) at the bottom of the case.
- Small parts organizer with three compartments and modular parts to build up to 21 compartments
- Additional space for spare parts and/or lubes.

### ADVANTAGES:

- Wheels and retractable handle with safety latch for easy transportation
- The pockets are sewed together with durable nylon thread
- Blank trays for customization available separately, cut them yourself and create the ultimate tool case for your needs. We suggest using hot wire foam cutter or utility knife for cutting.
- Waterproof and dustproof in accordance with IP67 certificate
- Watertight seal around lid
- Automatic pressure release valve
- Easy to open/close double throw latches
- Load tested soft grip handle
- Robust case from heavy-duty composite
- Corrosion free nylon pins
- Option to lock the case with a padlock (not included)
- Aluminum divider at the bottom of the tool case to keep your tools organized
- Flaps neatly close into the lid of the tool case
- The lid can carry T handle hexes up to size 10
- Special safety tight pockets to hold small tools
- 44 pockets in total, three SOS foam trays that can fit 50 or more tools, small parts organizer

## SMALL PARTS ORGANIZER FOR 970MASTERKIT

- Small parts organizer with three compartments and modular parts to build up to 21 compartments.
- 364 x 248 x 50 mm

**NEW**



CODE	ART.
626131	970MASTERKIT-ORG

CODE	ART.
629068	970MASTERKIT

## PRO KIT

- Pro Kit tool case is real world designed and tested by the professional mechanics on the toughest races around the world.
- Well thought out, extremely durable tool pallets organize and hold your tools in place. Pockets are designed with the size of our tools in mind. It also features a few extra pockets leaving you room to personalize your kit.
- After designing the tool case for Pro Kit, we sat down with our team mechanics and carefully selected a set of tools that demanding bicycle mechanic will appreciate. We picked 48 pieces of our tools that are a perfect fit for a portable set, shop, home or team mechanics.



## PRO KIT TOOL CASE

- The toolbox is designed especially for bike tools; it's made of heavy duty plastic and is waterproof and dustproof.
- It features a hangout pallet that hooks to the holes on the front side of the case, allowing you to have all your tools at hand. The pallet has 9 pockets that are designed to carry everything from pliers to open end wrenches.
- Flaps in the lid can be closed tightly with the Velcro straps; when closed, they also secure the tools in place. Open flaps and inner part of the lid give you 35 individual pockets to carry your tools. The biggest pockets can take our T handle hexes up to size 10 and a special small pockets can securely hold L shaped hex down to size 1.5 or similar small tools, so nothing ever gets lost.

### ADVANTAGES:

- The pockets are sewed together with durable nylon thread
- Waterproof and dustproof in accordance with IP67 certificate
- Watertight seal around lid
- Automatic pressure release valve
- Easy to open double throw latches
- Load tested soft grip handle
- Holes for shoulder strap (strap not included in the kit)
- Robust case from heavy-duty composite
- Corrosion free nylon pins
- Hang out pallet with 9 pockets, designed to carry everything from pliers to open end wrenches
- Aluminum divider at the bottom of the tool case to keep your tools organized
- Flaps neatly close into the lid of the tool case
- The lid can carry T handle hexes up to size 10
- Special safety tight pockets to hold small tools
- 44 pockets all together + storage under the pallet



BLUE		RED	
CODE	ART.	CODE	ART.
627042	1600PROKIT	627358	1600PROKIT-US

CODE	ART.
627041	970PROKIT



NEW

## HOME KIT

Compact tool case with smart tool selection and enough additional space for personalization. Home kit is perfect beginner set that you will upgrade with the selection of tools for your specific needs and build a dream set for your home workshop.

34 carefully selected high-quality Unior tools are enough for much more than just basic maintenance on just about any bike. Foam trays with cut outs will keep tools organized, while the dust and waterproof case will make sure tools will be always securely stored. Included additional blank foam tray gives room for tool case personalization, it can be cut to include some of your favorite tools or removed for extra storage space.

### SET INCLUDES:

- set of 9 ball-end hexagonal wrenches. Sizes included 1.5, 2, 2.5, 3, 4, 5, 6, 8, 10
- Torx wrenches set 10, 15, 25, 27, 30
- Pro Socket Handle
- Crowfoot pedal wrench
- Tools for removal and installation of the cassette
- Chain tool (compatible with 11 and 12 speed chains)
- Master Link pliers
- Chain wear indicator
- Round spoke wrench
- Bottom bracket wrench 16 notch
- 2-for-1 Disc Brake Tool
- Cable housing cutters
- Flat and PH screwdriver
- Set of two tire levers
- Crank cap tool and chainring nut wrench
- Cone wrenches, sizes 13, 14, 15, 16, 17
- Measuring tape 2m/6ft

### ADVANTAGES:

- 34 pieces of carefully selected high-quality Unior tools
- Two SOS foam trays with cut outs for all of the tools, one in a lid and one at the bottom of the case
- Foam cutouts feature laser engraved names/codes of the tools
- Additional blank SOS foam tray for tools storage
- Waterproof and dustproof in accordance with IP67 certificate
- Watertight seal around lid
- Automatic pressure release valve
- Easy to open/close double throw latches
- Load tested soft grip handle
- Robust case from heavy-duty composite



BLUE		RED	
CODE	ART.	CODE	ART.
629069	1600HOMEKIT	629070	1600HOMEKIT-US





## TOOL ROLL SET

Unior's Tool Roll is a great solution for a cyclist who wants to be ready for everything or a modern bikepacker, it will come handy even to a more demanding users such as XC or CX mechanics. The bag is compact, light, and easy to store in your backpack or your car. In this version it comes with great selection of tools.

- Long ball end hexagon wrench, sizes 1.5, 2, 2.5, 3, 4, 5, 6, 8 mm
- TX profile wrench, size T25
- Crank cap tool
- Chain tool, together with tire valve tool
- Round spoke wrench
- Set of two tire levers
- Crosstip screwdriver PH0

### ROLL FEATURES:

- Aluminum eyelets for setting the roll on the car seat, with fixation under the head rest
- Strong Velcro® straps for secure closing
- Side pockets with full flaps closing for parts or additional tools
- Additional elastic straps for even more tools
- Made from coated PU material, waterproof and oil resistant
- You can fit mini pump in there as well



BLUE		RED	
CODE	ART.	CODE	ART.
628713	1600ROLL	628714	1600ROLL-US

## PRO TOOL ROLL SET

Unior's Professional Tool Roll is big enough to fit all of the tools and bits that a more mechanically skillful cyclist will want to have at hand. Professional mechanics will love the size and organization of it, so don't be surprised when you see these in the team cars on the next Grand Tour or in the feed zone of the mountain bike or CX world cups. This version includes following tools:

- Long ball end hexagon wrench, sizes 1.5, 2, 2.5, 3, 4, 5, 6, 8 mm
- TX profile wrench, size T25
- Crank cap tool
- Chain tool
- Round spoke wrench
- Set of two tire levers
- Crosstip screwdriver PH0
- Pro Socket Handle
- Chain wear indicator
- Cassette wrench and Cassette lockring tool
- 2-For-1 disc brake tool

### ROLL FEATURES:

- Aluminum eyelets for setting the roll on the car seat, with fixation under the head rest
- Strong Velcro® straps for secure closing
- Side pockets with full flaps closing for parts or additional tools
- Additional elastic straps for even more tools
- Made from coated PU material, waterproof and oil resistant
- You can fit mini pump in there as well

BLUE		RED	
CODE	ART.	CODE	ART.
628715	1600ROLL-P	628716	1600ROLL-P-US





## TOOL ROLL

Unior's Tool Roll is a great solution for a cyclist who wants to be ready for everything or a modern bikepacker, it will come handy even to a more demanding user such as XC or CX mechanics. The bag is compact, light, and easy to store in your backpack or your car.

### FEATURES:

- Aluminum eyelets for setting the roll on the car seat, with fixation under the head rest
- Strong Velcro® straps for secure closing
- Side pockets with full flaps closing for parts or additional tools
- Additional elastic straps for even more tools
- Made from coated PU material, waterproof and oil resistant
- You can fit mini pump in there as well
- Tools are not included

CODE	ART.
628717	970ROLL



## PRO TOOL ROLL

Unior's Professional Tool Roll is big enough to fit all of the tools and bits that a more mechanically skillful cyclist will want to have at hand. Professional mechanics will love the size and organization of it, so don't be surprised when you see these in the team cars on the next Grand Tour or in the feed zone of the mountain bike or CX world cups.

### FEATURES:

- Aluminum eyelets for setting the roll on the car seat, with fixation under the head rest
- Strong Velcro® straps for secure closing
- Side pockets with full flaps closing for parts or additional tools
- Additional elastic straps for even more tools
- Made from coated PU material, waterproof and oil resistant
- You can fit mini pump in there as well
- Tools are not included

CODE	ART.
628718	970ROLL-P

## SUSPENSION SERVICE SET

Suspension service set includes the most common tools for servicing suspension forks and shocks, all nicely arranged in a SOS tool tray and stored in a compact box.

### THE SET CONTAINS:

- Bushing extractor set sizes 12 mm and 12.7 mm
- Fork seal driver tool for fork sliders sizes 30, 32, 34, 35, 36, 37, 38 and 40 mm
- Hex wrenches sizes 3/64", 1/16", 1.5, 2, 2.5 and 3
- 1/2" sockets sizes 10, 15, 26, 27, 28, 30 and 32
- 1/2" reversible ratchet
- 1/4" socket size 5
- 1/4" swivel handle
- Suspension wrench with strap
- Waterpump box joint pliers
- Awl with round, double bent blade



BLUE		RED	
CODE	ART.	CODE	ART.
625953	1704	628959	1704-US

## MASTER WHEEL BUILDING KIT

Unior's 1754 is a universal complete kit for building and truing wheels. All tools are organized in a compact two layer SOS foam storage box.

### KIT INCLUDES THE FOLLOWING TOOLS:

- 3.3, 3.45, 4, 4.3, 5, 5.5 mm spoke wrenches
- Shimano spoke wrench
- Flat spoke wrench
- Nipple driver and nipple assembly tool
- All Mavic spoke wrenches
- DT Swiss torx profile nipple wrench
- Inverted square nipple driver
- Spoke, bearing and cotter gauge



CODE	ART.
623441	1754

## SET OF BIKE TOOLS 37 PCS

Intermediate bike tool set satisfies the more demanding mechanic's needs.



CODE	ART.
622875	1600EN

## SET OF BIKE TOOLS IN TOOL BOX

Intermediate bike tool set satisfies the more demanding mechanic's needs.



CODE	ART.
623008	1600E1N





## SHOP-IN-BOX SET

Set is composed out of 68 commonly used workshop tools for general repairs on a bicycle, stored in a high end tool chest. Tools are divided in five compartments and stored in a high quality SOS foam.

CODE	ART.	DIMENSION
624096	1600M	/68

## BIKE TOOL SET IN SOS TOOL TRAY

Set is composed out of commonly used general tools for bicycle repair, such as screwdrivers and pliers. Tools are stored in a high quality SOS foam tray that will fit in any of our 938 or 939 tool chest models.

CODE	ART.
624360	1600M1



Set is composed out of commonly used open and cone wrenches together with a specific pedal wrench. Tools are stored in a high quality SOS foam tray that will fit in any of our 938 or 939 tool chest models.

CODE	ART.
624361	1600M2

Set is composed out of commonly used freewheel tools and set of high quality long hex wrenches. Tools are stored in a high quality SOS foam tray that will fit in any of our 938 or 939 tool chest models.

CODE	ART.
624362	1600M3



Set is composed out of commonly used spoke keys, together with metal and plastic tire levers and other specific bicycle tools. Tools are stored in a high quality SOS foam tray that will fit in any of our 938 or 939 tool chest models.

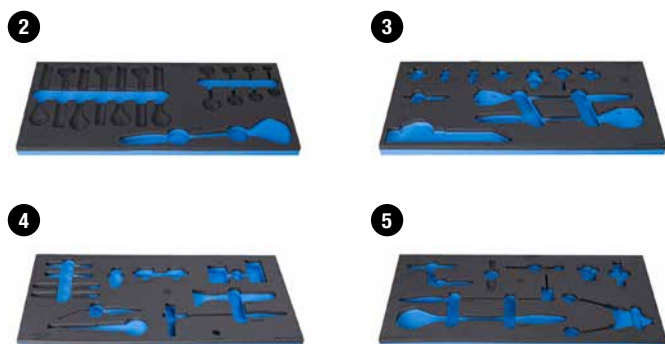
CODE	ART.
624363	1600M4

Set is composed out of different bottom bracket, crankset and chain tools. Tools are stored in a high quality SOS foam tray that will fit in any of our 938 or 939 tool chest models.

CODE	ART.
624364	1600M5



## SOS TOOL TRAY FOR 1600M



## BIKE TOOL SET IN SOS TOOL TRAY

- We took the tools from our Professional Mechanic Work Bench and adopted the SOS inserts to fit drawers of our trolleys. Selection of tools is now available in seven individual trays made of high quality foam (from model 1600SOS13 to model 1600SOS19), where each tool has its own place. Foam trays fit our Europlus, Eurovision, Eurostyle and Hercules trolleys.
- To better suit your needs each foam tray with tools is available separately.



	CODE	ART.	DIMENSION
1	624091	VL1600M1	572 x 270 x 30
2	624092	VL1600M2	
3	624093	VL1600M3	
4	624094	VL1600M4	
5	624095	VL1600M5	

CODE	ART.	DIMENSION
627160	1600SOS13	/11

## PROFESSIONAL MECHANIC TOOL CARRIAGE



## BIKE TOOL SET IN SOS TOOL TRAY

- We took the tools from our Professional Mechanic Work Bench and adopted the SOS inserts to fit drawers of our trolleys. Selection of tools is now available in seven individual trays made of high quality foam (from model 1600SOS13 to model 1600SOS19), where each tool has its own place. Foam trays fit our Europlus, Eurovision, Eurostyle and Hercules trolleys.
- To better suit your needs each foam tray with tools is available separately.



CODE	ART.	DIMENSION
627760	1600N1	/127

CODE	ART.	DIMENSION
627162	1600SOS14	/8

## BIKE TOOL SET IN SOS TOOL TRAY

- We took the tools from our Professional Mechanic Work Bench and adopted the SOS inserts to fit drawers of our trolleys. Selection of tools is now available in seven individual trays made of high quality foam (from model 1600SOS13 to model 1600SOS19), where each tool has its own place. Foam trays fit our Europlus, Eurovision, Eurostyle and Hercules trolleys.
- To better suit your needs each foam tray with tools is available separately.



CODE	ART.	DIMENSION
627164	1600SOS15	/17

## BIKE TOOL SET IN SOS TOOL TRAY

- We took the tools from our Professional Mechanic Work Bench and adopted the SOS inserts to fit drawers of our trolleys. Selection of tools is now available in seven individual trays made of high quality foam (from model 1600SOS13 to model 1600SOS19), where each tool has its own place. Foam trays fit our Europlus, Eurovision, Eurostyle and Hercules trolleys.
- To better suit your needs each foam tray with tools is available separately.



CODE	ART.	DIMENSION
627166	1600SOS16	/7

## BIKE TOOL SET IN SOS TOOL TRAY

- We took the tools from our Professional Mechanic Work Bench and adopted the SOS inserts to fit drawers of our trolleys. Selection of tools is now available in seven individual trays made of high quality foam (from model 1600SOS13 to model 1600SOS19), where each tool has its own place. Foam trays fit our Europlus, Eurovision, Eurostyle and Hercules trolleys.
- To better suit your needs each foam tray with tools is available separately.



CODE	ART.	DIMENSION
627168	1600SOS17	/25

## BIKE TOOL SET IN SOS TOOL TRAY

- We took the tools from our Professional Mechanic Work Bench and adopted the SOS inserts to fit drawers of our trolleys. Selection of tools is now available in seven individual trays made of high quality foam (from model 1600SOS13 to model 1600SOS19), where each tool has its own place. Foam trays fit our Europlus, Eurovision, Eurostyle and Hercules trolleys.
- To better suit your needs each foam tray with tools is available separately.



CODE	ART.	DIMENSION
627170	1600SOS18	/42



## BIKE TOOL SET IN SOS TOOL TRAY

- We took the tools from our Professional Mechanic Work Bench and adopted the SOS inserts to fit drawers of our trolleys. Selection of tools is now available in seven individual trays made of high quality foam (from model 1600SOS13 to model 1600SOS19), where each tool has its own place. Foam trays fit our Europlus, Eurovision, Eurostyle and Hercules trolleys.
- To better suit your needs each foam tray with tools is available separately.



CODE	ART.	DIMENSION
627178	1600SOS19	/19

## BEARING SERVICE TOOL TRAY

- Installation kit includes spindle with two threaded handles, adaptors for following standard bearings: 608, 1526, 6000, 6001, 6802, 6803, 6804, 6805, 6900, 6901, 6902, 6903, R6, 28x17 (Hope), BB30, all Press-fit standards and two different sized plastic coated adaptors, to protect carbon surfaces during bearing installation.
- One of the threaded handles includes a quick release system for quick and easy use.
- Removal kit includes heavy duty slide hammer with adaptors that support bearing removal with inner bearing dimensions 6.5-8, 10-12, 12-15, 17-20, 22-28, 30-36mm.
- All parts come arranged in a cut-out foam trays, that fits our Europlus, Eurovision, Eurostyle and Hercules trolleys

**NEW**



BLUE		RED	
CODE	ART.	CODE	ART.
629062	1600SOS20	629063	1600SOS20-US







## SOS TOOL TRAYS



**NEW**

	CODE	ART.	DIMENSION
1	627159	vi1600SOS13	564 x 364 x 30
2	627161	vi1600SOS14	
3	627163	vi1600SOS15	
4	627165	vi1600SOS16	
5	627167	vi1600SOS17	
6	627169	vi1600SOS18	
7	627171	vi1600SOS19	
8	626105	vi1600SOS20	



**MADE  
FOR  
WORK.**



**W**

**COMPLETE SERVICE SOLUTIONS**



## PROFESSIONAL MECHANIC WORKBENCH

Professional Mechanic Workbench is your choice for the most common bicycle repairs in your workshop. Bench comes with a tool chest with eight drawers and a 2050mm long hard wooden top. Most of the tools are stored in four drawers in a high quality cut-out foam tray. Workbench set comes with a fully equipped truing stand.

BLUE		RED	
CODE	ART.	CODE	ART.
628677	2600A	628678	2600A-US

## BIKE BUILD WORKBENCH

Bike Build Workbench is the perfect set of tools for bike assembly which come partially assembled in boxes directly from the factories. Workbench comes with a tool chest with eight drawers and a 2050mm long hard wooden top. Most of the tools are stored in three drawers in a compact high quality foam tray. Set also includes a truing stand.

BLUE		RED	
CODE	ART.	CODE	ART.
628611	2600B	628612	2600B-US

## MASTER WORKBENCH

Master Workbench is a fully equipped workstation for basic and detailed bike repairs. Workbench includes two tool chest units with sum of fifteen drawers and a 2050mm long hard wooden top. Seven drawers are full of tools, stored in a compact high quality foam tray. Set includes a fully equipped truing stand and an IRONGATOR, a vice with quick moving system.

BLUE		RED	
CODE	ART.	CODE	ART.
628622	2600C	628623	2600C-US

## SUSPENSION WORKBENCH

Suspension Workbench is a specific set of tools for servicing bicycle suspension. Workbench comes with a tool chest with eight drawers and a 2050mm long hard wooden top. Three drawers are full with specific and general tools stored in a compact high quality cut out foam. Other drawers are useful for storing spare parts and lubricants. Workbench also comes with IRONGATOR, a vice with a quick moving system and a bench mount bike stand.



BLUE		RED	
CODE	ART.	CODE	ART.
625464	2600D	628661	2600D-US

## SET OF TOOLS IN TRAY 1 FOR 2600D

Set contains general tools like T-Handle hex wrenches, selection of screwdrivers, hammers and other small specific tools.



BLUE		RED	
CODE	ART.	CODE	ART.
625490	SET1-2600D	628662	SET1-2600D-US

## SET OF TOOLS IN TRAY 3 FOR 2600D

Set contains specific selection of pliers for suspension service, fork seal tools, bushing extractor, flat sockets and other tools.



BLUE		RED	
CODE	ART.	CODE	ART.
625492	SET3-2600D	628664	SET3-2600D-US

## SET OF TOOLS IN TRAY 2 FOR 2600D

Set contains cone and open wrenches, tape measure and digital vernier and suspension strap with wrench.



BLUE		RED	
CODE	ART.	CODE	ART.
625491	SET2-2600D	628663	SET2-2600D-US

## SET OF TOOLS IN TRAY 1 FOR 2600A OR 2600C - GENERAL TOOLS



BLUE		RED	
CODE	ART.	CODE	ART.
628624	SET1-2600AC	628625	SET1-2600AC-US

## SET OF TOOLS IN TRAY 2 FOR 2600A OR 2600C- DRIVETRAIN TOOLS



BLUE		RED	
CODE	ART.	CODE	ART.
628626	SET2-2600AC	628627	SET2-2600AC-US

## SET OF TOOLS IN TRAY 3 FOR 2600A OR 2600C - WHEEL TOOLS



BLUE		RED	
CODE	ART.	CODE	ART.
628628	SET3-2600AC	628629	SET3-2600AC-US

## SET OF TOOLS IN TRAY 4 FOR 2600A OR 2600C - TORQUE TOOLS AND PLIERS



BLUE		RED	
CODE	ART.	CODE	ART.
628630	SET4-2600AC	628631	SET4-2600AC-US

## SET OF TOOLS IN TRAY 1 FOR 2600C - WHEEL BUILDING



BLUE		RED	
CODE	ART.	CODE	ART.
628646	SET1-2600C	628647	SET1-2600C-US

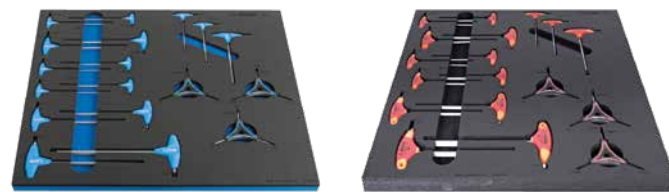
## SET OF TOOLS IN TRAY 3 FOR 2600C - FRAME PREPARATION TOOLS



BLUE		RED	
CODE	ART.	CODE	ART.
628650	SET3-2600C	628651	SET3-2600C-US

## SET OF TOOLS IN TRAY 1 FOR 2600B

Set contains general tools like T-Handle hex and torx wrenches.



BLUE		RED	
CODE	ART.	CODE	ART.
625483	SET1-2600B	628613	SET1-2600B-US



## SET OF TOOLS IN TRAY 2 FOR 2600B

Set contains cone and smaller open wrenches, pliers and tire levers.



BLUE		RED	
CODE	ART.	CODE	ART.
625484	SET2-2600B	628615	SET2-2600B-US

## SET OF TOOLS IN TRAY 3 FOR 2600B



BLUE		RED	
CODE	ART.	CODE	ART.
628617	SET3-2600B	628618	SET3-2600B-US

## BEARING SERVICE TOOL TRAY 2600E

- Installation kit includes spindle with two threaded handles, adaptors for following standard bearings: 608, 1526, 6000, 6001, 6802, 6803, 6804, 6805, 6900, 6901, 6902, 6903, R6, 28x17 (Hope), BB30, all Press-fit standards and two different sized plastic coated adaptors, to protect carbon surfaces during bearing installation.
- One of the threaded handles includes a quick release system for quick and easy use.
- Removal kit includes heavy duty slide hammer with adaptors that support bearing removal with inner bearing dimensions 6.5-8, 10-12, 12-15, 17-20, 22-28, 30-36mm.
- All parts come arranged in a cut-out foam and fit all the Unior wide workbench drawers.



BLUE		RED	
CODE	ART.	CODE	ART.
628121	SET-2600E	628676	SET-2600E-US

## SET OF TOOLS IN TRAY 2 FOR 2600C - FRAME AND FORK TOOLS



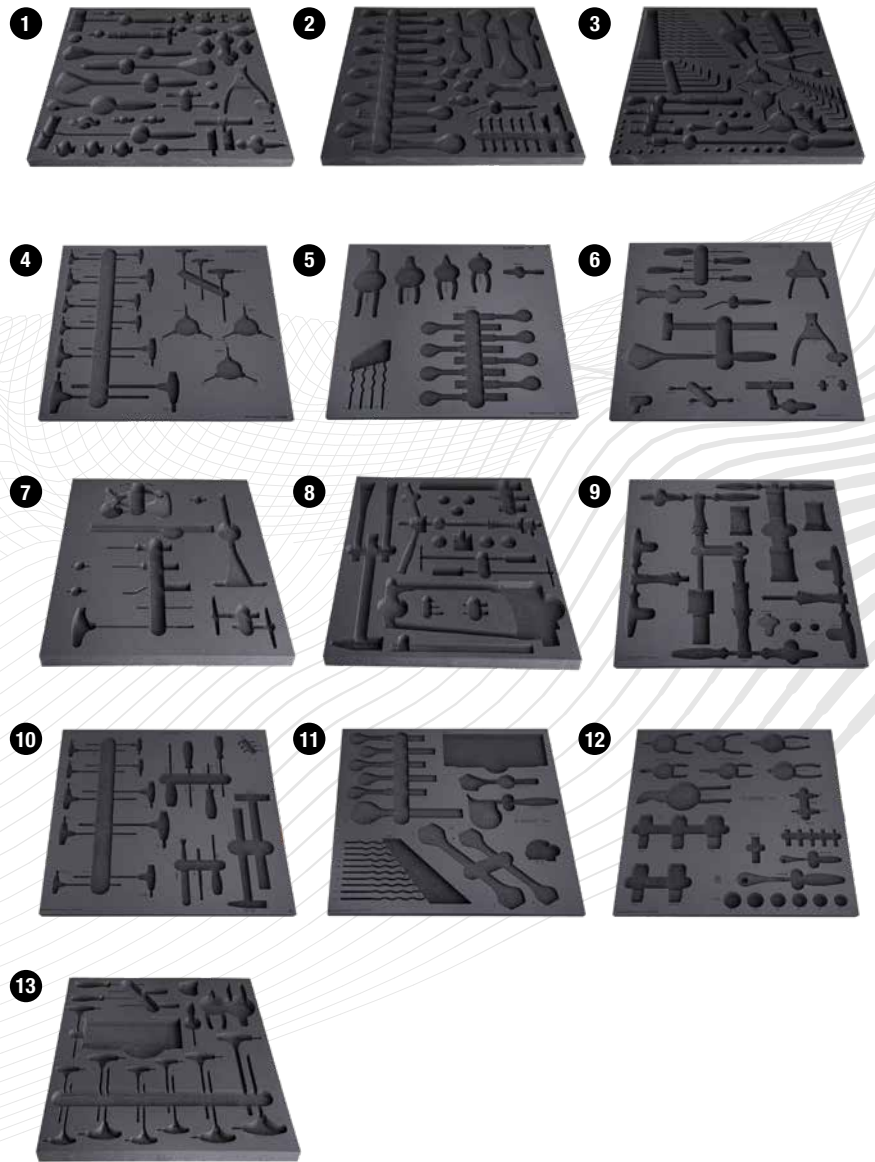
CODE	ART.	DIMENSION
628648	SET2-2600C	562 x 570 x 30

## BLANK TRAY FOR WIDE WORK BENCH DRAWERS 562x570x40



CODE	ART.	DIMENSION
627109	v1990WD.NEV	570 x 562 x 40
627110	v1990ND.NEV	374 x 570 x 40

# EMPTY TRAYS



CODE	ART.	DIMENSION	
628634	v12-2600AC	570 x 560 x 40	1
628635	v13-2600AC	570 x 560 x 40	2
628636	v14-2600AC	570 x 560 x 40	3
625469	v11-2600B	570 x 562 x 40	4
625470	v12-2600B	570 x 562 x 40	5
628620	v13-2600B	570 x 560 x 40	6
628652	v11-2600C	570 x 560 x 40	7
628653	v12-2600C	570 x 560 x 40	8
628654	v13-2600C	570 x 560 x 40	9
625476	v11-2600D	570 x 562 x 40	10
625477	v12-2600D	570 x 562 x 40	11
625478	v13-2600D	570 x 562 x 40	12
628633	v11-2600AC	570 x 560 x 40	13

# MADE FOR WORK.

Made For Work is our simple way of saying that our tools are made for real world conditions. They are designed to stand up to rigorous use, be ergonomic and comfortable to use, afford the correct mechanical leverage and perform perfectly.

Work is the primary function of a tool and we prioritise this over all other considerations. Our design, materials, finishes and execution are the result of a rigorous design

and engineering process, all pivoting around the tools core functionality. As such our range is made with the professional in mind at all times, meaning that home users benefit from the same performance as the pro.

Specialists are employed at every stage when developing a new tool for our bike range and in full awareness of the latest standards and trends.



MADE  
FOR  
WORK.



WORKSHOP A LA CART



## HEAVY DUTY DRAWER CABINET

- heavy duty and durable cabinet construction
- cabinet dimensions: L1221 × W700 × H1304 mm
- 6 drawers: 2 in size L1106 × W596 × H72 mm with capacity 90 kg and 4 in size L1106 × W596 × H198 mm with capacity 180 kg
- total drawer volume: 522 liters
- 100% extension drawers with high quality ball bearing slides
- central locking system with a lock and folding key
- block safety system prevents simultaneous opening of more than one drawer. When one drawer is opened, all other drawers are locked and cannot be opened, which prevents drawer from tipping over.
- customization – divide drawers with the use of partitions and dividers according to your needs
- made of premium PLUS sheet metal
- painted with eco colors of Qualicoat quality standard



BLUE		BLACK	
CODE	ART.	CODE	ART.
628257	991HD	628256	991HD-BLACK

## SET OF PARTITIONS FOR 991HD SMALL DRAWER, 3 PIECES



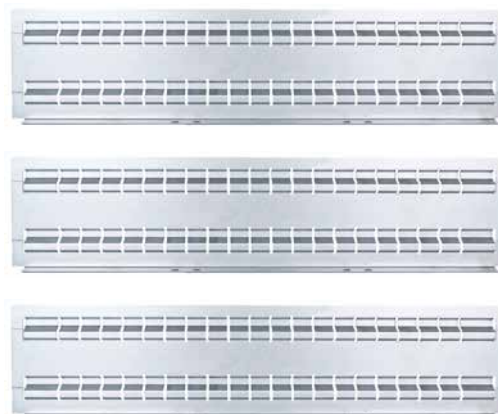
CODE	ART.	DIMENSION
628266	991.1HDS	596 x 28,2 x 63

## SET OF DIVIDERS FOR 991HD SMALL DRAWER, 5 PIECES

CODE	ART.	DIMENSION
628267	991.11HDS	74,7 x 7 x 68
628268	991.12HDS	100,5 x 7 x 68
628269	991.13HDS	152 x 7 x 68



## SET OF PARTITIONS FOR 991HD BIG DRAWER, 3 PIECES



CODE	ART.	DIMENSION
628270	991.2HDS	596 x 28 x 134

## SET OF DIVIDERS FOR 991HD BIG DRAWER, 5 PIECES

CODE	ART.	DIMENSION
628271	991.21HDS	74,7 x 7 x 139
628272	991.22HDS	100,5 x 7 x 139
628273	991.23HDS	152 x 7 x 139



## POWER SUPPORT FOR MODULAR WORK BENCH

- material: premium PLUS sheet metal
- Power support for modular work bench includes 2 reels (electric and hose) with spring return.
- Electric cable reel includes 13m cable 3x1,5mm<sup>2</sup> for 220V.
- Hose reel includes hose in length of 15m, inner diameter 8mm, outer diameter 12mm, 1/4" connector. Max. working pressure 12 bars.
- The bottom part with doors and a shelf in the interior.
- The reels are available also as a individual article; the hose reel under the code 627387 and the electric cable reel under code 627387. Reels can be assembled on the support leg of the modular work bench with help of the pneumatic holder, code 627372.
- lock with key included also foam keyring



BLUE		BLACK	
CODE	ART.	CODE	ART.
625646	990PNE	628809	990PNE-BLACK

## NARROW DRAWER CABINET - 6 DRAWERS

- material: premium PLUS sheet metal
- central locking system with a lock and folding key
- lock with key included also foam keyring
- full extension drawers with top quality ball-bearing slides
- the synthetic covering protects drawers and tools from damage
- coated with eco colour of Qualicoat quality standard
- 6 drawers (4 x L 374 x W 570 x H 70 mm, 1 x L 374 x W 605 x H 150 mm, 1 x L 374 x W 605 x H 230 mm)
- basic dimensions L 475 x W 650 x H 870 mm
- total volume of drawers: 145 litres
- possible use of SOS tool tray system in drawers
- maximum capacity of each drawer: 50kg



BLUE		BLACK		DIM
CODE	ART.	CODE	ART.	
625622	990ND6	626166	990ND6-BLACK	475 x 650 x 870

## CLEANING SUPPORT FOR MODULAR WORK BENCH

- material: premium PLUS sheet metal
- With 2 pull out drawers.
- In the upper drawer can be placed a paper roll of max. dia. 270mm and max. length 380mm. There is also a place on the back side of the drawer for the spare paper roll.
- The lowest drawer has 2 divided containers for waste, total volume 50 litres; the first container has possibility to put the waste through the flap door on the front side of the drawer.
- coated with eco colour of Qualicoat quality standard



BLUE		BLACK	
CODE	ART.	CODE	ART.
625655	990BIN	628810	990BIN-BLACK

## NARROW DRAWER CABINET - 2 DRAWERS AND DOOR

- material: premium PLUS sheet metal
- central locking system with a lock and folding key
- lock with key included also foam keyring
- full extension drawers with top quality ball-bearing slides
- the synthetic covering protects drawers and tools from damage
- coated with eco colour of Qualicoat quality standard
- 2 drawers (2 x L 374 x W 570 x H 70 mm)
- with door
- basic dimensions L 475 x W 650 x H 870 mm
- total volume of drawers: 30 litres
- possible use of SOS tool tray system in drawers
- maximum capacity of each drawer: 50kg



BLUE		BLACK		DIM
CODE	ART.	CODE	ART.	
625624	990NDD2	626167	990NDD2-BLACK	475 x 650 x 870

## ADJUSTABLE LEG FOR MODULAR WORK BENCH

- material: premium sheet metal
- coated with eco colour of Qualicoat quality standard



BLUE		BLACK		DIMENSION
CODE	ART.	CODE	ART.	
625629	990LA	626630	990LA-BLACK	100 x 650 x 690 x 1110

## WOODEN BENCH TOP

- beech plywood
- protected with environmentally friendly coating



CODE	ART.	DIMENSION
625630	990TW	1500 x 750 x 40
625631	990TW	2000 x 750 x 40
625632	990TW	2500 x 750 x 40

## STAINLESS WORKTOP

- material: stainless steel
- stainless worktop is used only with wooden bench top article 990TW
- thickness of stainless worktop is 1 mm



CODE	ART.	DIMENSION
625633	990TWS	1503 x 753 x 41
625634	990TWS	2003 x 753 x 41
625635	990TWS	2503 x 753 x 41

## WIDE DRAWER CABINET UNDERBASE

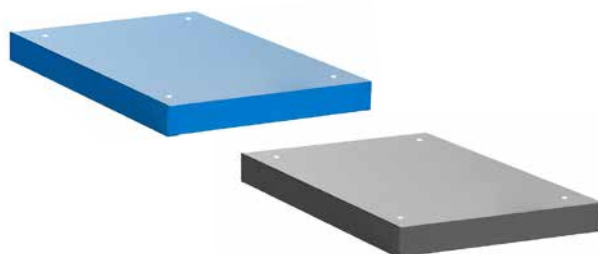
- material: premium sheet metal



BLUE		BLACK		DIMENSION
CODE	ART.	CODE	ART.	
625641	990WDU	627688	990WDU-BLACK	60

## NARROW DRAWER CABINET UNDERBASE

- material: premium sheet metal



BLUE		BLACK		DIMENSION
CODE	ART.	CODE	ART.	
625643	990NDU	627689	990NDU-BLACK	60

## LEFT SUPPORT

- coated with eco colour of Qualicoat quality standard
- material: premium PLUS sheet metal



BLUE		BLACK		DIMENSION
CODE	ART.	CODE	ART.	
625648	990SL	627694	990SL-BLACK	32 x 45 x 1155



## RIGHT SUPPORT

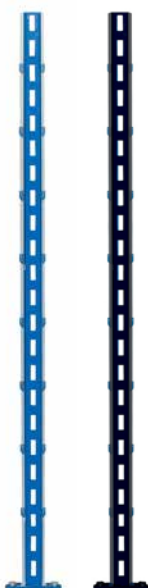
- material: premium PLUS sheet metal
- coated with eco colour of Qualicoat quality standard



BLUE		BLACK		DIMENSION
CODE	ART.	CODE	ART.	
625649	990SR	627690	990SR-BLACK	32 x 45 x 1155

## MIDDLE SUPPORT

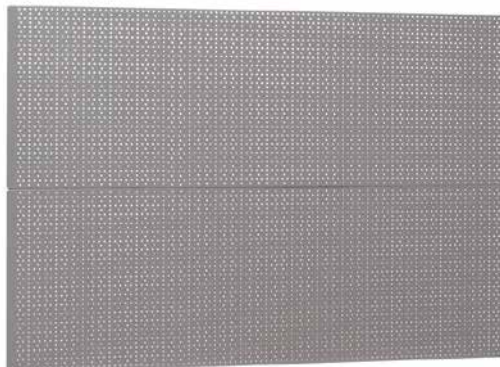
- material: premium PLUS sheet metal
- coated with eco colour of Qualicoat quality standard



BLUE		BLACK		DIMENSION
CODE	ART.	CODE	ART.	
625650	990SM	627691	990SM-BLACK	32 x 45 x 1155

## PERFORATED BACK, 2 PCS SET

- coated with eco colour of Qualicoat quality standard
- material: premium PLUS sheet metal



CODE	ART.	DIMENSION
625652	990B	952 x 1018
625653	990B	1202 x 1018
625654	990B	1436 x 1018

## HOLDER WITH PARAPET CHANNEL



CODE	ART.	DIMENSION
625656	990HPC	998 x 130 x 55
625657	990HPC	1248 x 130 x 55
625658	990HPC	1498 x 130 x 55

## HOLDER FOR PLASTIC BOX



CODE	ART.	DIMENSION
625660	990HPB	1000
625661	990HPB	1250
625662	990HPB	1500

## HOLDER FOR LIGHT WITH CONSOLE



CODE	ART.	DIM
625663	990HL	999
625664	990HL	1249
625665	990HL	1499

## LIGHT

- with power supply cable and two light connector
- lifetime of leds is 25000 hours
- Color temperature is 4000K
- Hg free
- UV free



IP20 25000h 4000K HgFREE UVFREE

CODE	ART.	DIM
625667	990LIGHT	900
625671	990LIGHT	1200

## SHELF WITH HOLDERS

- material: premium PLUS sheet metal
- coated with eco colour of Qualicoat quality standard



CODE	ART.	DIM
625672	990SHELF	1000
625673	990SHELF	1250
625674	990SHELF	1500

## TOOL CARRIAGE EUROVISION

- material: premium PLUS sheet metal
- possibility to add accessories
- blind nuts for fixing accessories are mounted on the carriage.
- static load capacity of carriage without casters: 1600kg
- dynamic load capacity of carriages: 500 kg
- maximum capacity of each drawer: 45kg
- 8 drawers (7x L 563 x W 365 x H 70mm, 1x L 563 x W 383 x H 150mm)
- basic dimensions with handle and casters L 800 x W 440 x H 923mm
- total volume of drawers: 135 litres
- drawers compatible with SOS tool trays 1/3, 2/3, 3/3

### ADVANTAGES:

- coated with eco colour of Qualicoat quality standard
- opening and closing of drawers is very simple due to the uniform solution - drawer handle on the upper side enables users a synchronic grip and opening of a carriage drawer.
- drawer closing mechanism prevents unwanted opening of drawers
- drawers with non-slip interior synthetic lining
- central locking system with a lock and folding key
- lock with key included also foam keyring
- full extension drawers with top quality ball-bearing slides
- oil and acid resistant casters of a diameter of 125mm, one with brake, which blocks spinning and swiveling of the caster



BLUE		BLACK		DIMENSION
CODE	ART.	CODE	ART.	
619886	940EV6	624841	940EV6-BLACK	800 x 440 x 923

# TOOL CARRIAGE HERCULES

- material: premium PLUS sheet metal
- central locking system with a lock and folding key
- lock with key included also foam keyring
- oil and acid resistant casters of a diameter of 125mm, one with brake, which blocks spinning and swiveling of the caster
- full extension drawers with top quality ball-bearing slides
- opening and closing of drawers is very simple due to the uniform solution - drawer handle on the upper side enables users a synchronic grip and opening of a carriage drawer.
- drawers with non-slip interior synthetic lining
- coated with eco colour of Qualicoat quality standard
- 7 front drawers (5x L 563 x W 365 x H 70mm, 2x L 563 x W 383 x H 150mm)
- basic dimensions with handle and casters L 1182 x W 640 x H 955 mm
- total volume of drawers: 133 litres
- door with lock
- wooden worktop
- static load capacity of carriages without casters: 2300 kg
- dynamic load capacity of carriages: 550 kg
- capacity of front drawers: 45 kg
- drawers compatible with SOS tool trays 1/3, 2/3, 3/3

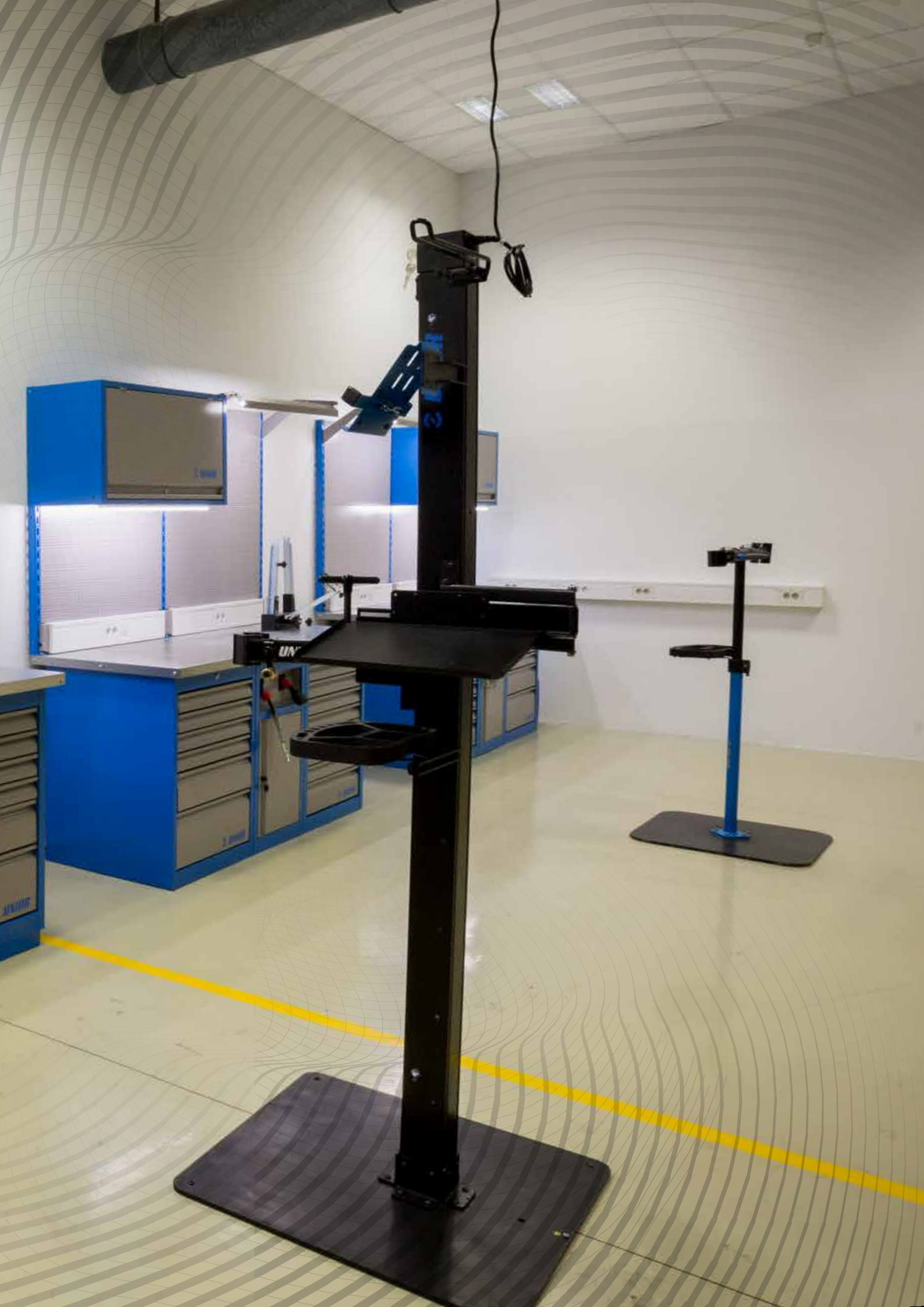
## ADVANTAGES:

- Perforated wall on the back side of the tool carriage allows hanging tools with tool hooks
- As an accessories available also a spray holder for easy storage of sprays up to dia. 68mm, and a back door with a lock



BLUE		BLACK		DIMENSION
CODE	ART.	CODE	ART.	
615511	940H2	628212	940H2-BLACK	1182 x 640 x 955





## HANGING CABINET FOR WORK BENCHES

- material: premium PLUS sheet metal
- door locked with lock and folding key
- lock with key included also foam keyring
- coated with eco colour of Qualicoat quality standard
- maximal load capacity of hanging cabinet length 1000mm is 40kg, for 1250mm and 1500mm is 50kg. Load capacity of the shelf is 15kg
- hanging door with telescopic mechanism
- on the bottom part of the cabinet is set a light holder
- two possibilities of hanging - on the support leg of the modular work bench or on the wall. For hanging on the wall additional support is enclosed.



## TOOL CHEST WIDE - 7 DRAWERS

- material: premium PLUS sheet metal
- central locking system with a lock and folding key
- lock with key included also foam keyring
- full extension drawers with top quality ball-bearing slides
- the synthetic covering protects drawers and tools from damage
- coated with eco colour of Qualicoat quality standard
- 7 drawers (5 x L 564 x W 570 x H 70mm, 2x L 564 x W 605 x H 150mm)
- basic dimensions L 663 x W 650 x H 870 mm
- total volume of drawers: 214 litres
- possible use of SOS tool tray system in drawers
- maximum capacity of each drawer: 50kg



NEW



BLUE		BLACK		DIMENSION
CODE	ART.	CODE	ART.	
627088	990CAU	628808	990CAU-BLACK	1000

BLUE		BLACK		DIMENSION
CODE	ART.	CODE	ART.	
625621	990WD8	628585	990WD7-BLACK	663 x 650 x 870



# Forged by the best. For the best.

An advantage of in-house manufacturing is that we offer coherent solutions to all user types. From Complete Service Solutions to portable Tool Wraps to Multitools, our range is designed to be accessible and supportive to all bike tools users.

This consistency of quality and user experience is an important part of Unior's approach. With a focus on organisation with our laser cut foam trays, to our carefully considered Tool Kits the goal remains clear - our users are confident to use Unior.

From design to production systems we operate a program of continuous improvement - as we manufacture our own tools we have full control over what we do. An advantage we have over other brands is we have **full control from raw materials to finished tool** allowing us to operate this way.

**MADE IN  
SLOVENIA.**



# MADE IN SLOVENIA.

Our origin story is important for the user of Unior tools. Unior's factories use the latest equipment, some of which we make in our own Machine Tools department. As a responsible manufacturer, our commitment to environmental protection is one we take seriously, and our environmental management system is in accordance with the requirements of the international standard ISO 14001.

ISO 14001 deals with different aspects: environmental protection, emergency procedures and safety at work. Specifically, environment management includes reducing resource consumption, improved productivity of technological processes and the reduction of negative environmental impacts. It is important we forge a future that is sustainable for all and Unior will continue to find solutions to this global problem.

As manufacturers of tools we have full control over the specification of not only the tool but the materials used to make it. 8 different steel types are used by Unior to ensure our tools can perform correctly and reliably throughout their lifespan.

We recognise the investment made by professionals and home users alike - Unior customers should be confident the tools they buy are the best, have been used and tested by the best, and that we back them up with support to match their expectations with a **limited lifetime warranty**.









MADE FOR WORK.

UNIQLO





**MADE FOR WORK.**



For more information on Unior Bike Tools please contact:

Kovaška cesta 10, 3214 Zreče, Slovenia

E: [bike@unior.com](mailto:bike@unior.com) | T: +386 (0)3 75 78 172 | W: [www.uniorbiketools.com](http://www.uniorbiketools.com)



#uniortools  
#worldofunior  
#unior  
#uniorbiketools

MADE FOR WORK.